

<https://doi.org/10.25221/fee.496.2>

<https://elibrary.ru/qlyxdj>

<https://zoobank.org/References/EA536743-E982-4695-93D4-A5860F587824>

FIRST RECORD OF *ELAPHRUS (SINOELAPHRUS) ANGULONOTUS* SHI ET LIANG, 2008 (COLEOPTERA: CARABIDAE) FROM RUSSIA

P. V. Budilov^{1,2)}

1) Institute for Complex Analysis of Regional Problems, Far Eastern Branch of the Russian Academy of Sciences, Sholom-Aleikhem Str. 4, Birobidzhan, 679016, Russia. E-mail: convexus@mail.ru

2) Federal State Budgetary Institution "State Nature Reserve "Bastak", Sholom-Aleikhem Str. 69a, Birobidzhan, 679016, Russia.

Summary. The ground beetle *Elaphrus angulonotus* and subgenus *Sinoelaphrus* are recorded from Russia for the first time. The images of male body and genitalia of this species are given.

Key words: ground beetles, Elaphrinae, fauna, new record, Russian Far East.

В. П. Будилов. Первое указание *Elaphrus (Sinoelaphrus) angulonotus* Shi et Liang, 2008 (Coleoptera: Carabidae) для России // Дальневосточный энтомолог. 2024. N 496. С. 10-11.

Резюме. Впервые для России указывается жужелица *Elaphrus angulonotus* и подрод *Sinoelaphrus*. Приводятся фотографии тела и гениталий самца этого вида.

INTRODUCTION

Previously, *Elaphrus (Sinoelaphrus) angulonotus* Shi et Liang, 2008 (Carabidae: Elaphrinae) was known from North China only: Beijing, Hebei, southeastern part of Inner Mongolia, Shandong, Jiangsu (Shi & Liang, 2008). Now this species is found in Russia.

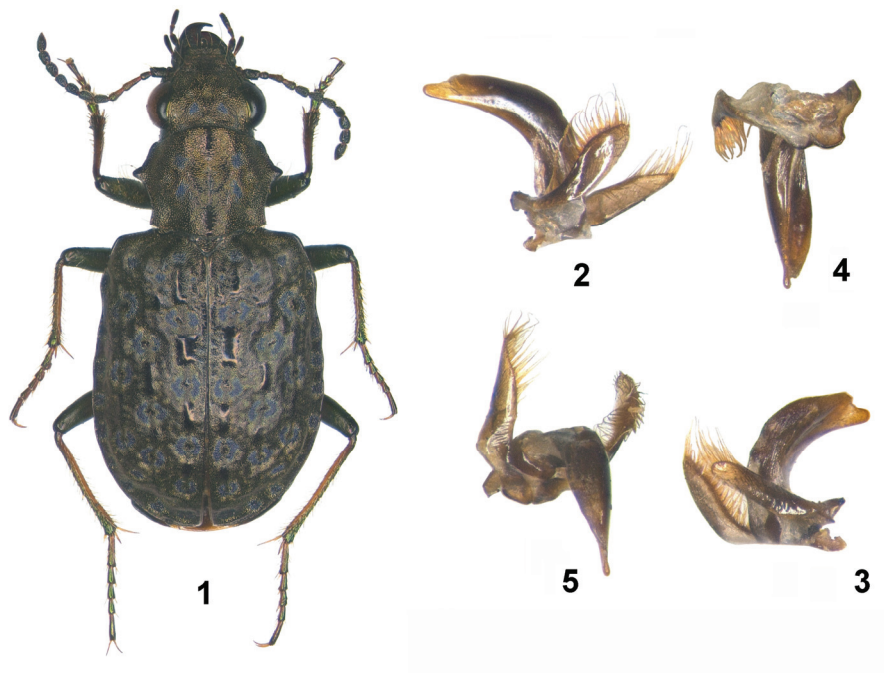
NEW RECORD

***Elaphrus (Sinoelaphrus) angulonotus* Shi et Liang, 2008**

Figs 1–5

MATERIAL EXAMINED. Russia: Jewish Autonomous Region, "State Nature Reserve "Bastak", cluster "Zabelovsky", shore of Zabelovskoye Lake, 48°25,851'N, 134°13,079'E, floodplain sedge community from *Carex appendiculata*. 15-18.VI 2023, 2♂, 1♀, leg. P.V. Budilov.

DISTRIBUTION. Russia (**new record**): Jewish Autonomous Region; North China: Beijing, Hebei, southeastern Inner Mongolia, Shandong, and Jiangsu.



Figs 1–5. *Elaphrus angulonotus* Shi et Liang, 2008, male. 1 – habitus; 2–5– genitalia: 2 – laterally, left view; 3 – same, right view; 4 – ventral view; 5 – dorsal view.

REMARKS. The habitus and male genitalia of Russian specimens are identical to Chinese ones. Moreover, the monotypic subgenus *Sinoelaphrus* Shi et Liang, 2008 of the genus *Elaphrus* Fabricius, 1775 is new for the Russian fauna. In June 2023 the beetles moved actively in sunny weather during the daytime on the shore of Zabelovskoye Lake.

ACKNOWLEDGMENTS

The author thanks Boris M. Kataev (Zoological Institute RAS) and Hongliang Shi (Southwest Forestry College) for comparing photographs of *Elaphrus angulonotus* from Russia with materials stored in the collections of these institutes.

REFERENCES

Shi, H. & Liang, H. 2008. A new species and new subgenus of the genus *Elaphrus* from North China, with cladistic analysis of taxa of the tribe Elaphrini (Coleoptera: Carabidae). *Zootaxa*, 1933(1): 33–42.