

Far Eastern Entomologist

Дальневосточный энтомолог

Journal published by Far East Branch
of the Russian Entomological Society
and Laboratory of Entomology,
Institute of Biology and Soil Sciences,
Vladivostok

Number 168: 1-20

ISSN 1026-051X

January 2007

A REVIEW OF THE THYATIRIN-MOTHS (LEPIDOPTERA, DREPANIDAE: THYATIRINAE) OF THE RUSSIAN FAR EAST

Yu A. Tshistjakov

*Institute of Biology and Soil Science, Far East Branch of the Russian Academy
of Sciences, Vladivostok-22, 690022, Russia*

Twenty seven species of Thyatirinae are reviewed. *Epipsestis nikkoensis* Mats. and *Shinploca shini* Kim are recorded for the first time from Russia and *Thogaria suzukiana* Mats. is newly recorded from the North Kuriles and South of Primorskii krai. New synonymy is proposed for *Cymatophora angustata* Staudinger, 1888 = *Palimpsestis ampliata angustimedia* Warren, 1912 **syn. n.** New status is established for *Tethea ampliata angustata* (Staudinger, 1888) **nom. resurr. et stat. n.** The data on general distribution, habitats and the host plants are summarized.

KEY WORDS: Lepidoptera, Thyatiridae, taxonomy, faunistic, Russian Far East.

Ю. А. Чистяков. Обзор подсемейства совковидок (Lepidoptera, Drepanidae: Thyatirinae) Дальнего Востока России // Дальневосточный энтомолог. 2007. N 168. С. 1-20.

Дан обзор 27 видов подсемейства Thyatirinae. *Epipsestis nikkoensis* Mats. и *Shinploca shini* Kim впервые указываются для фауны России, а *Thogaria suzukiana* Mats. впервые отмечен для Северных Курил и Юга Приморского края. Установлена новая синонимия: *Cymatophora angustata* Staudinger, 1888 = *Palimpsestis ampliata angustimedia* Warren, 1912 **syn. n.** Предложен новый статус для *Tethea ampliata angustata* (Staudinger, 1888) **nom. resurr. et stat. n.** Обобщены сведения по географическому распространению, стациальному распределению и биологии всех рассматриваемых видов.

Биолого-почвенный институт, Дальневосточное отделение Российской академии наук, Владивосток-22, 690022, Россия.

INTRODUCTION

There is no special work on thyatirins fauna of the Russian Far East. Besides old works there are less than ten taxonomic and faunistic papers with descriptions of some new taxa or with brief notes on newly recorded species (Bremer, 1861, 1864; Oberthür, 1879, 1880; Staudinger, 1887, 1892; Graeser, 1888; Alphéraky, 1897; Matsumura, 1925). Most completely data on Thyatirinae fauna were referred in the list of Far Eastern Lepidoptera, compiled mainly on the basis of the relevant volumes of "Macrolepidoptera of the World" by A. Seitz and published almost 80 years ago (Moltrecht, 1929), where 16 species were reported, including *Palimpsestis intensa* Butl. (= *Tethea octogesima* Butler, 1878) and *Thyatira trimaculata* Bremer, 1861. Now the latter taxon is transferred to genus *Cymatophoropsis* Hampson, 1894, Noctuidae. Since that time six species - *Thyatira flavida* Butl. (Matsumura, 1925), *Ochropacha duplaris* L. (Shel'juzhko, 1926), *Neodaruma tamanukii* (Matsumura, 1933a), *Tethea consimilis* (Vasyurin & Tshistjakov, 1979), *Epipsestis perornata* (Tshistjakov & Dubatolov, 1987), *Achlya flavicornis jesoensis* (Tshistjakov, 2006) were added and 4 taxa - *Togaria suzukiana* (Matsumura, 1921), *Achlya hoerburcheri* (Schawerda, 1924), *Epipsestis ornata obscurata* (Tshistjakov, 1987) and *Notoploca nigripunctata zolotarensis* (Dubatolov, 1987) were described from this territory.

In the course of this study two other species – *Epipsestis nikkoensis* Mats. and *Shinploca shini* Kim were found to be new for fauna of the Russian Far East. From the other hand, it was estimated, indication of *Tethea octogesima* Butl. for south part of Primorskii krai had been based on misidentification and this species should be omitted from the local fauna. Thus, upon our data with regard for literature sources 27 species of Thyatirinae are registered in the Russian Far East.

The aim of this paper is to summarize all data and available material on this subfamily in the Russian Far East. Paper based mainly on the author's material and on the collection of the Institute of Biology and Soil Science, Russian Academy of Sciences, Vladivostok (both of those are presented in survey without special indication). In the case when observed material does not cover all known localities within Russian Far East such additional data are borrowed from the literature (the current names of mentioned sites are given in square brackets). The literature cited for every species includes only sources based on the local material. The information for each observed species includes the basic bibliography, host plants and habitats in the local conditions and general distribution as well.

The follow abbreviations of collectors are used below: E. Volkova – EV, K. Tamanuki – KT, M. Omel'ko – MO, Yu. Tshistjakov – YT.

LIST OF SPECIES

Thyatira batis mandschurica Werny, 1966

Thyatira batis: Graeser, 1888: 150 (Nikolaevk-on-Amur, Khabarovsk, Vladivostok); Staudinger, 1892: 375; Matsumura, 1925: 114 (Sakhalin Is.: Parukata [northern part of the

island], Ichinozawa [now: Pervaya Pad' settl., near Korsakov]); Kurentzov, 1922: 35 (Ussuriisk); Filipjev, 1927: 259 (Imperatorskaya Havan' [now: Sovetskaya Bay]); Kurentzov, 1935a: 89 (Northern Sakhalin); Kurentzov, 1935b: 56,58 (Iman [now: Bolshaya Ussurka] and Kolumbe rivers); Kurentzov, 1939: 172 (Olimpiada cape, Khualasa and Pidan Mts. [now: Krinichnaya and Livadiiskaya Mts. correspondently], Askold Is.); Kuwayama, 1967: 79 (Southern Kuriles, Kunashir Is.); Vasyurin & Tshistjakov, 1979: 101; Tshistjakov, 1992: 137.

Thyatira batis mandschurica: Tshistjakov, 2006: 191.

Thyatira batis japonica: Dubatolov, 1991:182 (Southern Kuriles, Kunashir Is., Alekhino).

DISTRIBUTION: Continental part of the Russian Far East (Amurskaya oblast', south of Khabarovskii krai, Primorskii krai, Sakhalinskaya oblast'); Northern Mongolia, North-Eastern and North China, Korea.

HABITAT. Various types of forest, mainly thinned out woods and woodsides.

HOST PLANTS: *Rubus* spp.

MATERIAL EXAMINED. Buryatia: 1 ♂, Arshan, 27.YI 1984 (YT leg.). Amurskaya oblast': 1 ♂, Khinganskyi Nature Reserve, Kundur, 22.YII 1988 (YT leg.). Khabarovskii krai: 5 ♂, Myaochan Range, 8.YII 2000 (V. Mutin leg.). Primorskii krai: 3 ♂, Ternei, 17.YI, 5.YIII 1962 (EV leg.), same locality, 20.YII 1964 (EV leg.); 3 ♂, 30 km N Chuguevka, 27, 29.YII 1992 (YT leg.); 2 ♂, El'dorado Mnt., 880 m above s.l., 29, 39. YI 1979 (V. Vasyurin leg.); 3 ♂, female, Lysaya Mnt., 1600 m above s.l., 28.VI 1971 (V. Vasyurin leg.), 2 ♂, same locality, 17.YI, 19.YII 1973 (V. Vasyurin leg.); 3 ♂, 30 km E Yasnoe, 3, 4.YIII 1995 (YT leg.); 1 ♂, 8 km NE Scherbakovka, 6.YIII 1995 (YT leg.); 1 ♂, 18 km SW Krounovka, 15.YII 1992 (YT leg.); 1 ♂, 6 km SE Chernigovka, 24.YI 1997 (YT leg.); 1 ♂, "Nikolsk-Ussuryisk" [now: Ussuryisk], 1919 (G. Dul'keit leg.); 1 ♂, Gornotayozhnoe, 20 km SE Ussuryisk, 20.YII 1990 (YT leg.); 10 ♂, 2 ♀, same locality, 18.YI 1995 (YT leg.); 1 ♂, "Suputinskyi zapovednik" [now: Ussuryiskyi Nature Reserve], 21.YII 1960 (Z. Konovalova leg.); 1 ♂, same locality, 1.YII 1966 (Z. Konovalova leg.); 1 ♂, same locality, 17.YII 1990 (YT leg.); 1 ♂, Brovnichi, 28.YII 1993 (YT leg.); 1 ♂, 8 km N Ekaterinovka, 16.YII 1995 (YT leg.); 12 ♂, 2 ♀, De-Fris peninsula, 4.YIII 1954, 16.YII 1955, 39.YI, 16.YII 1957, 21.YII 1960, 19.YI, 30.YII 1961, 30.YII 1962, 9.YII, 2.YII 1964, 9.YII 1967, 21.YI - 17.YIII 1968 (MO leg.); 8 ♂, 4 ♀, Kedrovaya Pad' Nature Reserve, 6.YI - 20.YII 1976, 1.YI 1992 (YT leg.); 1 ♂, 10 km N Zanadvorovka, 3.YIII 1984 (YT leg.); 2 ♂, same locality, 6.YIII 1985 (YT leg.); 2 ♂, Ryasanovka, 19, 20.YII 1992 (YT leg.). Sakhalin Is.: 1 ♂, "Konuma" [now: Yuzhno-Sakhalinsk], 15, 20.YIII 1933 (KT leg.); 1 ♂, same locality, 4.YII 1934 (KT leg.).

***Thyatira flavida* Butler, 1885**

Thyatira flavida: Matsumura, 1925: 114 (Sakhalin Is.: Ichinozawa [now: Pervaya Pad' settl., near Korsakov]).

Macrothyatira flavida: Dubatolov, 1991: 182 (Southern Kuriles, Kunashir Is., Alekhino).

DISTRIBUTION: South Sakhalin, Southern Kuriles (Kunashir Is.); Central China, Korea, Japan.

HABITAT. Various types of forest, mainly thinned out woods.

HOST PLANTS: *Rubus* spp.

***Habrosyne pyritoides derasoides* (Butler, 1878)**

Gonophora derasa: Graeser, 1888: 148 (Nikolaevk-on-Amur, Vladivostok).

Habrosyne (*Gonophora*) *derasa*: Staudinger, 1892: 374 (= *intermedia* Brem; = *derasoides* Butl.) (Blagoveshchensk, Suifun river [now: Rasdolnaya river], Askold Is.).

Habrosyne pyritoides derasoides: Vasyurin & Tshistjakov, 1979: 101; Tshistjakov, 1992: 137; Tshistjakov, 2006: 191.

DISTRIBUTION: South of the Russian Far East (Amurskaya oblast', south of Khabarovskii krai, Primorskii krai, Sakhalin); North-Eastern and North China, Korea.

HABITAT. Various types of forest, mainly thinned out woods.

HOST PLANTS: *Rubus* spp.

MATERIAL EXAMINED. Primorskii krai: 1 ♂, Ternei, 23.YII 1961 (EV leg.); 1 ♂, same locality, 5.YIII 1962 (EV leg.); 4 ♂, same locality, 10-28.YII, 6.YIII 1964 (EV leg.); 3 ♂, De-Fris peninsula, 14.YII -7.YIII 1964 (MO leg.); 2 ♂, same locality, 19, 29.YII 1968 (MO leg.); 1 ♂, Anisimovka, 29.YI 1988 (YT leg.); 1 ♂, same locality, 10.YII 1990 (YT leg.); 1 ♂, Malyi Uliss Bay [East border of Vladivostok], 23.YII 1961; 1 ♂, Kievka, 27.YII 1970 (YT leg.); 4 ♂, Kedrovaya Pad' Nature Reserve, 20.YI - 20.YII 1976 (YT leg.); 1 ♂, 10 km N Zanadvorovka, 1.YIII 1984 (YT leg.).

***Habrosyne intermedia* (Bremer, 1864)**

Habrosyne intermedia: Bremer, 1864: 46; Matsumura, 1925: 113 (Sakhalin Is.: Ichinozawa [now: Pervaya Pad' settl., near Korsakov]); Kurentzov, 1935a: 89 (Northern Sakhalin); Kurentzov, 1935b: 57,58 (Iman [now: Bolshaya Ussurka] and Kolumbe rivers); Kurentzov, 1939: 172 (Olimpiada cape, Khualasa and Pidan Mts.[now: Krinichnaya and Livadiiskaya Mts. correspondently], Askold Is.); Tshistjakov et al., 1998: 75; Tshistjakov, 2006: 191.

Gonophora derasa var. *intermedia*: Graeser, 1888: 148 (Nikolaevk-on-Amur, Vladivostok).

DISTRIBUTION: South of the Russian Far East (Amurskaya oblast', south of Khabarovskii krai, Primorskii krai, Sakhalin); South-Western China (Yunnan), Korea.

HABITAT. Various types of forest, mainly thinned out woods.

HOST PLANTS: *Rubus* spp.

MATERIAL EXAMINED. Khabarovskii krai: 1 ♂, Myaochan Range, 3.YII 2000 (V. Mutin leg.). Primorskii krai: 1 ♂, Ternei, 20.YII 1961 (EV leg.); 2 ♂, same locality, 22.YII - 5.YIII 1962 (EV leg.); 2 ♂, same locality, 20.YII, 3.YIII 1964 (EV leg.); 1 ♂, 30 km NE Tetyuhe [now: Dal'negorsk], 28. YI 1971 (YT leg.); 3 ♂,

1 ♀, 30 km NE Chuguevka, 27, 29.YII 1988 (YT leg.); 3 ♂, Oblachnaya Mt., 1730 m above s.l., 16.YII 1993 (YT leg.); 1 ♂, 25 km N Yasnoe, 1.YIII 1993 (YT leg.); 4 ♂, same locality, 3, 4.YIII 1995 (YT leg.); 2 ♂, El'dorado Mt., 1 350 m above s.l. 24, 30.YI 1979 (V. Vasyurin leg.); 1 ♂, Gornotayozhnoe, "Gerasimov' klyuch" 15.YII 1931 (A. Kurenzov leg.); 1 ♂, Anisimovka, 6.YII 1975 (YT leg.); 1 ♂, same locality, 10.YII 1990 (YT leg.). Sachalinskaya oblast': 3 ♂, Sachalin Is., Haga, Shimizu, 22, 27.YII 1932 (H Kono leg.); 1 ♂, Sachalin Is., Shimizu [now: Chistovodnoe], 20.YII 1934 (M.Yoshikura leg.); 1 ♂, "Cent. Esp. Sta., Konuma" [now: Yuzhno-Sakhalinsk], 20.YII 1934 (KT leg.).

***Habrosyne dieckmanni* (Graeser, 1888)**

Gonophora dieckmanni: Graeser, 1888: 148 (Nikolaevsk-on-Amur).

Habrosyne dieckmanni: Staudinger, 1892: 375 (Blagoveshchensk); Matsumura, 1925: 114 (Sakhalin Is.: Ichinozawa [now: Pervaya Pad' settl., near Korsakov]); Kurentzov, 1935a: 89 (Northern Sakhalin); Kurentzov, 1935b: 58 (Iman [now: Bolshaya Ussurka] and Kolumbe rivers); Kurentzov, 1937: 118 (Tachin-Guan Range [now: Partisanskii Range], headstream of Kolumbe river); Kurentzov, 1939: 172 (Olimpiada cape, Kolumbe and upper Ulahe [now: Ussuri] rivers, Krinichnaya and Livadiiskaya Mts.); Vasyurin & Tshistjakov, 1979: 101; Tshistjakov, 1992: 137; Tshistjakov et al., 1998: 75; Tshistjakov, 2006: 191.

Habrosyne dieckmanni roseola: Dubatolov, 1991: 182 (Southern Kuriles: Iturup Is., Kunashir Is.).

DISTRIBUTION: Continental part of the Russian Far East (Amurskaya oblast', south of Khabarovskii krai, Primorskii krai); North-Eastern China, Korea.

HABITAT. Various types of forest, mainly thinned out woods.

HOST PLANTS: *Rubus* spp.

MATERIAL EXAMINED. Amurskaya oblast': 1 ♂, Khinganskyi Nature Reserve, Kundur, 22.YII 1988 (YT leg.); 1 ♂, Khinganskyi Nature Reserve, 16 km W Kundur, Olochi river, 25.YII 1988 (YT leg.). Primorskii krai: 1 ♂, Ternei, 26.YII 1962 (EV leg.), 4 ♂, same locality, 2 - 20.YII 1964 (EV leg.); 1 ♂, 17 km NE Glubinnoe, 18.YI 1990 (YT leg.); 1 ♂, 12 km E Dersu, 16.YI 1990 (YT leg.); 3 ♂, 30 km N Chuguevka, 26 - 29.YII 1992 (YT leg.); 2 ♂, 25 km N Yasnoe, 1.YIII 1993 (YT leg.); 1 ♂, 12 km N Yasnoe, 3.YIII 1995 (YT leg.); 1 ♂, El'dorado Mnt., 1350 m above s.l., 9. YII 1979 (V. Vasyurin leg.); 2 ♂, Lysaya Mnt., 1500 m above s.l., 27.YI 1973 (V. Vasyurin leg.); 1 ♂, 6 km NE Slinkino, 2. YIII 1995 (YT leg.); 1 ♂, Gornotayozhnoe, 20 km SE Ussuryisk, 20.YII 1990 (YT leg.); 4 ♂, "Suputinskyi zapovednik" [now: Ussuryiskiyi Nature Reserve], 23.YI - 20.YII 1966 (Z. Konovalova leg.); 1 ♂, same locality, 17.YII 1990 (YT leg.); 3 ♂, Anisimovka, 20.YI - 6.YII 1975 (YT leg.); 2 ♂, 8 km S Anisimovka, 31.YII - 1.YIII 1995 (YT leg.); 1 ♂, De-Fris peninsula, 16.YI 1957 (MO leg.); 2 ♂, Okeanskaya, near Vladivostok, 15.YI - 12.YII 1994 (YT leg.); 6 ♂, 1 ♀, Kedrovaya Pad' Nature Reserve, 14.YI - 20.YII

1976 (YT leg.); 1 ♂, same locality, 5.YI 1983 (V. Kononenko leg.); 3 ♂, same locality, 29,30.YI 1991 (YT leg.); 4 ♂, 10 km N Zanadvorovka, 6.YII - 3.YIII 1984 (YT leg.); 3 ♂, Ryasanovka, 19, 20.YII 1992 (YT leg.). Sakhalinskaya oblast': 1 ♂, Sachalin Is., 20.YII 1928 (KT leg.); 5 ♂, "Cent. Esp. Sta., Konuma" [now: now: Yuzhno-Sakhalinsk], 18, 20.YII 1934 (KT leg.); 2 ♂, Yuzhno-Sakhalinsk, 11, 13.YII 1991 (A. Strel'zov leg.).

***Tetheella fluctuosa fluctuosa* (Hübner, [1803] 1796)**

Palimpsestis fluctuosa: Sedyh, 1979:294 (Kamchatskaya oblast: Kozyrevsk, Novyi Sem'yachik river, Elisovo, Petropavlovsk-Kamchatskii).

Cymatophora fluctuosa: Lobkova, 1986:111 (Kamchatskaya oblast: Zhupanovo).

Tetheella fluctuosa fluctuosa: Tshistjakov, 2000: 255.

DISTRIBUTION: Boreal and subboreal zones of Eurasia from Western Europe up to Kamchatka and Sakhalin Island.

HABITAT. Various types of forest.

HOST PLANTS: *Betula* spp., *Populus* spp., *Salix* spp.

MATERIAL EXAMINED. Kamchatskaya oblast': 1 ♂, 40 km W Ust'-Kamchatsk, 15.YII 1996 (YT leg.).

***Tetheella fluctuosa isshikii* (Matsumura, 1921)**

Palimpsestis fluctuosa: Matsumura, 1925: 114 (Sakhalin Is.: Kawakami [now: Sinegorsk]); Kurentzov, 1937: 118 (Tachin-Guan Range [now: Partisanskii Range]).

Tetheella fluctuosa: Vasyurin & Tshistjakov, 1979: 101; Tshistjakov, 2006: 191.

Tetheella fluctuosa isshikii: Dubatolov, 1991: 182 (Sakhalin Is.: Urozhaynoje, Yuzhno-Sakhalinsk; Southern Kuriles: Kunashir Is., Alekhino).

DISTRIBUTION: South of the Russian Far East (Amurskaya oblast', south of Khabarovskii krai, Primorskii krai); North-Eastern and North China, Korea, Japan.

HABITAT. Various types of forest, penetrates into the mountains up to dark-coniferous taiga zone.

HOST PLANTS: *Betula* spp., *Populus* spp., *Salix* spp.

MATERIAL EXAMINED. Primorskii krai: 2 ♂, Ternei, 3, 17.YII 1964 (EV leg.); 2 ♂, 32 km NE Sandagou [now: Bulyga-Fadeevo], 17.YII 1973 (YT leg.); 6 ♂, 1 ♀, 30 km N Chuguevka, 26 - 29.YII 1992 (YT leg.); 9 ♂, 2 ♀, 25 km N Yasnoe, 29.YII - 1.YIII 1993 (YT leg.); 1 ♂, 12 km N Yasnoe, 3.YIII 1995 (YT leg.); 1 ♂, El'dorado Mnt., 1350 m above s.l., 29.YI 1979 (V. Vasyurin leg.); 2 ♂, Lysaya Mnt., 1500 m above s.l., 27.YI 1973 (V. Vasyurin leg.); 1 ♂, 30 km N Chernigovka, 28.YI 1999 (YT leg.); 4 ♂, "Suputinskyi zapovednik" [now: Ussuryiskiyi Nature Reserve], 9.YI - 14.YII 1966 (Z. Konovalova leg.); 1 ♂, same locality, 22.YI 1970 (M. Kascheev leg.); 4 ♂, 34 km S Krounovka, 23.YI 1998 (YT leg.); 3 ♂, Brovnichi,

27, 28.YII 1993 (YT leg.); 2 ♂, 8 km N Ekaterinovka, 4.YIII 1993 (YT leg.); 1 ♂, Anisimovka, 6.YII 1975 (YT leg.); 1 ♂, same locality, 28.YI 1988 (YT leg.); 2 ♂, 10 km N Zanadvorovka, 4, 7.YII 1985 (YT leg.); 6 ♂, 3 ♀, Kedrovaya Pad' Nature Reserve, 6.YI - 20.YII 1976 (YT leg.); 1 ♂, same locality, 4.YII 1983 (YT leg.); 2 ♂, same locality, 30.YI 1991 (YT leg.); 1 ♂, Andreevka, 30.Y 1992 (YT leg.). Sakhalinskaya oblast': 1 ♂, Sachalin Is., 30.YII 1928 (KT leg.); 2 ♂, "Cent. Esp. Sta., Konuma" [now: now: Yuzhno-Sakhalinsk], 15.YII - 8.YIII 1933 (KT leg.); 4 ♂, same locality, 1.Y -20.YII 1934 (KT leg.).

***Tethea ocularis amurensis* Warren, 1912**

Cymatophora octogesima (!): Graeser, 1888: 150 (sensu: *octogesimea* Hübner, [1786]) (Blagoveschensk, Khabarovsk, Nikolaevsk-on-Amur); Staudinger, 1892: 377 (Amur, Raddefka [now: Radde], Baranovka, Sutchan [now: Partisansk]).

Palimpsestis ocularis amurensis: Filipjev, 1927: 259 (Tigrovaya).

Tethea ocularis amurensis: Vasyurin & Tshistjakov, 1979: 102; Tshistjakov et al., 1998: 75; Tshistjakov, 2006: 192.

DISTRIBUTION: South of the Russian Far East (Amurskaya oblast', south of Khabarovskii krai, Primorskii krai, Southern Sakhalin); North-Eastern and Northern China, Korea.

HABITAT. Various types of forest, penetrates into the mountains up to dark-coniferous taiga zone.

HOST PLANTS: *Populus* spp.

MATERIAL EXAMINED. Amurskaya oblast': 1 ♂, Blagoveschensk, near Peschannyy lake, 14.YI 1996 (A. Strel'zov leg.). Khabarovskii krai: 1 ♂, Evoron lake, 1.YII 1975 (V. Mutin leg.); 2 ♂, Gorin river, basin of Low Amur river, 25.YI 1980 (V. Mutin leg.). Primorskii krai: 1 ♂, Ternei, 4.YII 1961 (EV leg.); 2 ♂, same locality, 1.YII 1962 (EV leg.); 2 ♂, same locality, 3, 13.YII 1964 (EV leg.); 2 ♂, Dersu, 13.YI 1990 (YT leg.); 1 ♂, 30 km N Chuguevka, 26.YII 1992 (YT leg.); 2 ♂, 25 km N Yasnoe, 3, 4.YIII 1995 (YT leg.); 2 males, 8 km NW Scherbakovka, 5, 6.YIII 1995 (YT leg.); 2 ♂, Lysaya Mnt., 1500 m above s.l., 19.YII 1973 (V. Vasyurin leg.); 1 ♂, 6 km SE Chernigovka, 24.YI 1997 (YT leg.); 1 ♂, Gribnoe, 10 km SE Chernigovka, 24.YI 1995 (YT leg.); 1 ♂, "Suputinskyi zapovednik" [now: Ussuryiskiyi Nature Reserve], 5.YI 1970 (M. Kascheev leg.); 1 ♂, same locality, 17.YII 1990 (YT leg.); 1 ♂, same locality, 12.YII 1993 (YT leg.); 2 ♂, 8 km S Krounovka, 13.YII 1992 (YT leg.); 1 ♂, 8 km N Ekaterinovka, 16.YII 1995 (YT leg.); 1 ♂, 4 km W Uglegorsk, 5.YI 1994 (YT leg.); 2 ♂, 6 km E Novaya Moskva, 14.YII 1995 (YT leg.); 9 ♂, 3 ♀, Anisimovka, 20.YI - 11.YIII 1975 (YT leg.); 6 ♂, same locality, 19 - 29.YI 1988 (YT leg.); 1 ♂, same locality, 12.YII 1999 (YT leg.); 1 ♂, Barabash, 4.YII 1983 (V. Kononenko leg.); 4 ♂, 1 ♀, Kedrovaya Pad' Nature Reserve, 14.YI - 30.YII 1976 (YT leg.); 1 ♂, same locality, 7.YIII 1983 (V. Kononenko leg.).

***Tethea or terrosa* (Graeser, 1888)**

Palimpsestis or var. *terrosa* Graeser, 1888: 150 (Nikolaevk-on-Amur, Pokrovka, Khabarovsk, Vladivostok). *Palimpsestis* or *terrosa*: Staudinger, 1892: 376 (Ussuri river, Askold Is.); Filipjev, 1927: 259 (Tigrovaya); Kurentzov, 1939: 173 (Sudzuche river [now: Kievka river]).

Palimpsestis kurilensis Matsumura, 1929: 166; Matsumura, 1931: 673, fig. 319; Matsumura, 1933a: 197 (Southern Kuriles, Iturup, Shana [now: Kurilsk settl.]).

Tethea or *terrosa*: Kuwayama, 1967: 79 (South Kuriles, Iturup Is.); Vasyurin & Tshistjakov, 1979: 102; Tshistjakov et al., 1998: 75; Tshistjakov, 2006: 192.

Tethea or *akanensis*: Dubatolov, 1991: 182 (Sakhalin Is.: Urozhaynoje; Southern Kuriles: Kunashir Is., Ivanovsky cape).

DISTRIBUTION: South of the Russian Far East (Amurskaya oblast', south of Khabarovskii krai, Primorskii krai, South Sakhalin, South Kuriles (Iturup Is.); North-Eastern China, Korea, Japan (Hokkaido).

HABITAT. Various types of forest, penetrates into the mountains up to dark-coniferous taiga zone.

HOST PLANTS: *Populus* spp.

MATERIAL EXAMINED. Amurskaya oblast': 1 ♂, tract Muchino near Blagoveschensk, 9.YII 1996 (A. Strel'zov leg.). Khabarovskii krai: 3 ♂, Evoron lake, 1.YII 1975 (V. Mutin leg.); 1 ♂, Sovetskaya Gavan', 6.VII 1975 (V. Kirpichnikova leg.). Primorskii krai: 3 ♂, Ternei, 3.YII - 5.YIII 1962 (EV leg.); 2 ♂, same locality, 23.YI - 12.YII 1964 (E. Volokova leg.); 1 ♂, 30 km NW Tetyuhe [now: Dal'negorsk], 28.YI 1971 (YT leg.); 1 ♂, 12 km E Yasnoe, 3.YIII 1995 (YT leg.); male, Pshenizyno, 24.Y 1973 (YT leg.); 1 ♂, El'dorado Mnt., 1350 m above s.l., 29.YI 1979 (V. Vasyurin leg.); 1 ♂, Lysaya Mnt., 1500 m above s.l., 27.YI 1973 (V. Vasyurin leg.); 1 ♂, Chernigovka, 30.YI 1999 (YT leg.); 4 ♂, 1 ♀, Gornotayozhnoe, 20 km SE Ussuryisk, 12.YI 1995 (YT leg.); 1 ♂, "Suputinskiy zapovednik" [now: Ussuryiskiy Nature Reserve], 5.YI 1970 (M. Kascheev leg.); 1 ♂, same locality, 17.YII 1990 (YT leg.); 4 ♂, same locality, 30.YI - 12.YII 1993 (YT leg.); 1 ♂, Krounovka, 28.Y 1992 (YT leg.); 3 ♂, 1 ♀, 8 km S Krounovka, 13, 15.YII 1992 (YT leg.); 1 ♂, 6 km NE Slinkino, 2.YIII 1995 (YT leg.); 1 ♂, 8 km N Ekaterinovka, 16.YII 1995 (YT leg.); 2 ♂, 6 km E Novaya Moskva, 14.YII 1995 (YT leg.); 1 ♂, Tigrovoi, 10.YII 1921 (A. Kurentzov leg.); 1 ♂, stream near Pidan [now: Litovka Mnt.], 20.YI 1921 (A. Kurentzov leg.); 1 ♂, Beresovyi stream near Kangaus [now: Anisimovka], 15.YII 1972 (V. Vasyurin leg.); 2 ♂, same locality, 13, 21.YII 1975 (YT leg.); 3 ♂, same locality, 28.YI 1988 (YT leg.); 2 ♂, same locality, 14.YI 1989 (YT leg.); 3 ♂, same locality, 10.YII 1990 (YT leg.); 1 ♂, 9 km S Anisimovka, 19.YII 1995 (YT leg.); 5 ♂, 2 ♀, Kedrovaya Pad' Nature Reserve, 14.YI - 20.YII 1976 (YT leg.); 1 ♂, same locality, 5.YI 1983 (V. Kononenko leg.); 1 ♂, same locality, 30.YI 1991 (YT leg.); 1 ♂, 1 ♂, Ryasanovka, 20.YII 1992 (E. Belyaev leg.); 1 ♂, De-Friz peninsula, 8.YI 1957 (MO leg.). Sakhalinskaya oblast': 1 ♂, Sakhalin Is., 2 males, "Cent. Esp. Sta., Konuma" [now: Yuzhno-Sakhalinsk], 29.Y - 12.YII 1934 (KT leg.).

***Tethea ampliata angustata* Staudinger, 1888, nom. ressur., stat. n.**

Figs 1, 2

Cymatophora angustata Staudinger, 1888: 231, Pl. XYII, fig. 6 (Ussuri river, Askold Is.).

Cymatophora ampliata: Graeser, 1888: 150 (Khabarovsk). Staudinger, 1892: 377 (Baranovka, Sutchan [now: Partisansk], Suifun river [now: Rasdolnaya river], Vladivostok, Askold Is., Sidemi [now: Besverhovo settl.]).

Palimpsestis ampliata angustimedia Warren, 1912: 329, **syn. n.**

Palimpsestis ampliata: Filipjev, 1927: 259 (Tigrovaya); Bryk, 1942: 33.

Tethea ampliata: Kuwayama, 1967: 79 (Southern Kuriles, Kunashir Is.); Vasyurin & Tshistjakov, 1979: 102; Dubatolov, 1991: 182 (Southern Kuriles, Kunashir Is.: Alekhino, Ivanovsky cape).

Palimpsestis askoldensis: Houlbert, 1921: 176 (Southern Primorye, "Sidemi" [now: Besverhovo]).

Tethea ampliata angustimedia: Tshistjakov, 2006: 192.

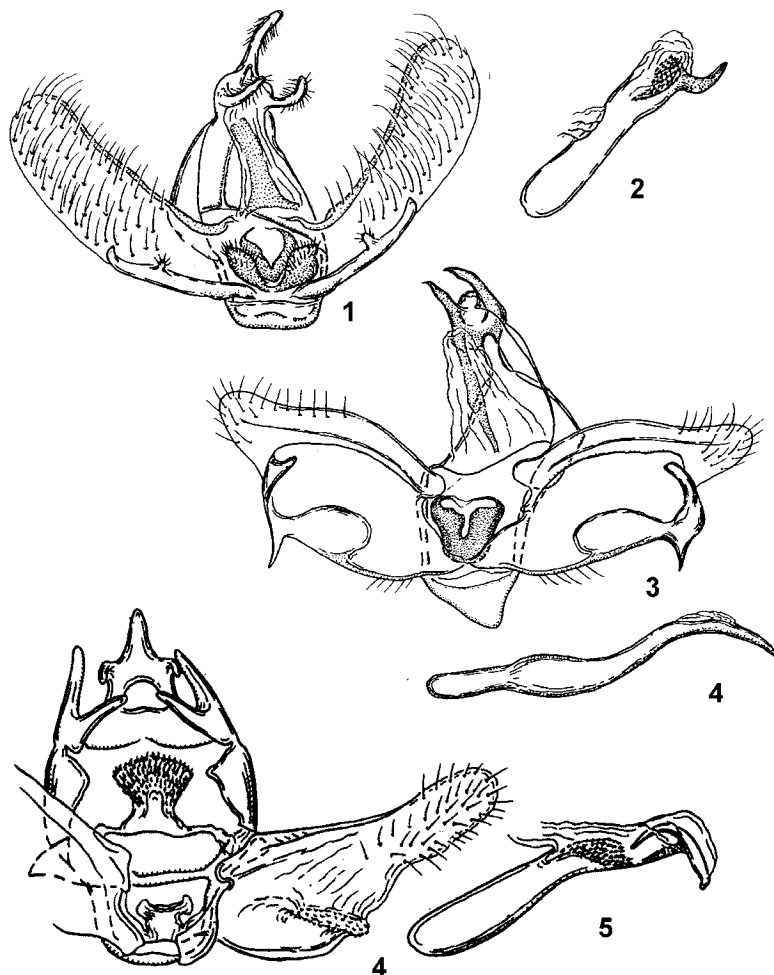
DISTRIBUTION: South of the Russian Far East (South of Khabarovskii krai, Primorskii krai); North-Eastern and North China, Korea.

HABITAT. Various types of mixed broad-leaved-coniferous forest and oak woods.

HOST PLANT: *Quercus mongolica*.

MATERIAL EXAMINED. Primorskii krai: 2 ♂, Ternei, 19.YI - 5.YII 1961 (EV leg.); 2 ♂, 17, 26.YII 1962 (EV leg.); 4 ♂, 1 ♀, same locality, 10 - 22.YII 1964 (EV leg.); 1 ♂, 30 km NW Tetyuhe [now: Dal'negorsk], 28.YII 1971 (YT leg.); 3 ♂, Pshenizyno, 4.YI 1973 (YT leg.); 1 ♀, Lysaya Mnt., 1500 m above s.l., 29.YI 1973 (V. Vasyurin leg.); 1 ♂, Chernigovka, 30.YI 1999 (YT leg.); 2 ♂, Gribnoe, 10 km SW Chernigovka, 24, 25.YI 1995 (YT leg.); 1 ♂, 30 km N Chernigovka, 28.YI 1999 (YT leg.); 1 ♂, 5 km SW Pogranichnyi, 16.YI 1988 (YT leg.); 1 ♂, Nikolovskiy, 27.YI 1970 (D. Kononov leg.); 1 ♂, Sinel'nikovo, 8.YI 1999 (YT leg.); 1 ♂, Gornotayozhnoe, 20 km SE Ussuryisk, 20.YII 1990 (YT leg.); 1 ♂, "Suputinskyi zapovednik" [now: Ussuryiskiy Nature Reserve], 26.YII 1960 (O. Kovalev leg.); 2 ♂, same locality, 30.YI - 12.YII 1993 (YT leg.); 2 ♂, 2 ♀, 38 km SW Krounovka, 18, 19.YI 1998 (YT leg.); 1 ♂, 6 km E Novaya Moskva, 14.YII 1995 (YT leg.); 1 ♂, Tigrovoi, 10.YII 1921 (A. Kurenzov leg.); 6 ♂, 2 ♀, Anisimovka, 20.YI - 21.YII 1975 (YT leg.); 5 ♂, 1 ♀, same locality, 28, 29.YI 1988 (YT leg.); 3 ♂, same locality, 28.YI 1988 (YT leg.); 4 ♂, 10 km N Zanadvorovka, 6.YII - 5.YIII 1984 (YT leg.); 2 ♂, same locality, 6.YIII 1985 (YT leg.); 1 ♂, Barabash, 4.YII 1983 (V. Kononenko leg.); 5 ♂, 2 ♀, Kedrovaya Pad' Nature Reserve, 14.YI - 20.YII 1976 (YT leg.); 1 ♂, same locality, 5.YI 1983 (YT leg.); 1 ♂, same locality, 1.YII 1991 (YT leg.); 2 ♂, De-Friz peninsula, 17.YII 1953 (D. Kononov leg.); 2 ♂, same locality, 30.YI, 15.YII 1957 (MO leg.); 1 ♂, same locality, 3.YII 1961 (MO leg.); 1 ♂, same locality, 30.YII 1962 (MO leg.); 1 ♂, same locality, 24.YII 1963 (MO leg.); 1 ♂, Okeanskaya near Vladivostok, 1.YII 1997 (YT leg.). Sakhalinskaya oblast': 1 ♂, Kunashir Is., Alehino, 22.YII 1962 (M. Saphronova leg.).

REMARKS. After W. Warren (1912) taxon *angustata* Stgr. was treated a synonym of *Th. intensa* Butler, 1881 (which in its term recently is recognizing a junior synonym of *Th. octogesima* Butler, 1878). Here taxon *angustata* Stgr. is treated the continental subspecies of *Th. ampliata* Butler, 1878, described from Japan, while *Palimpsestis ampliata angustimedia*, indicated by W. Warren for Amurland and Korea should be considered synonym of the latter.



Figs 1-6. Male genitalia. 1, 2) *Tethea ampliata angustata*; 3, 4) *Shinploca shini*; 5, 6) *Epipsestis nikkoensis*. 1, 3, 5 – caudal view; 2, 4, 6 – aedeagus.

***Tethea albicostata albicostata* (Bremer, 1861)**

Cymatophora albicostata: Bremer, 1861: 484 (middle Amur); Bremer, 1864: 47; Staudinger, 1892: 376 (Blagoveshchensk, Raddevka, Ussuri river).

Saronaga albicostata: Filipjev, 1927: 259 (Tigrovaya [near Partisansk]).

Tethea albicostata albicostata: Tshistjakov et al., 1998: 75; Tshistjakov, 2006: 192.

Tethea albicostata japonibia: Dubatolov, 1991:182 (Southern Kuriles: Kunashir Is., Ivanovsky cape).

DISTRIBUTION: Primorskii krai, Southern Kuriles (Kunashir Is.); Western, North-Eastern, North and Central China, Korea.

HABITAT. Mixed broad-leaved-coniferous forest and oak woods.

MATERIAL EXAMINED. Primorskii krai: 4 ♂, 2 ♀, Glubinnoe, 19.YI 1990 (YT leg.); 2 ♂, 2 km W Dersu, 15.YI 1990 (YT leg.); 2 ♂, 2 ♀, Sinancha [now: Pereval'naya river], 30 km S Dal'nyi Kut, 28.YI - 10.YII 1968 (D. Kononov leg.); 1 ♂, 30 km N Chuguevka, 29.YII 1992 (YT leg.); 4 ♂, "Suputinskiy zapovednik" [now: Ussuryiskiy Nature Reserve], 23.YI 1966 (D. Kononov leg.); 2 ♂, Polkovnitsa Mnt., 38 km SW Krounovka, 19.YI 1998 (YT leg.); 2 ♂, 6 km E Novaya Moskva, 15.YII 1995 (YT leg.); 7 ♂, 2 ♀, Anisimovka, 20.YI - 13.YII 1975 (YT leg.); 1 ♂, 12 km E Anisimovka, Litovka Mnt., 1150 m above s.l., 20.YII 1995 (YT leg.); 10 ♂, 3 ♀, Kedrovaya Pad' Nature Reserve, 12.YI - 20.YII 1976 (YT leg.); 1 ♂, same locality, 7.YIII 1983 (V. Kononenko leg.), 1 ♂, 1 ♀, same locality, 30.YI 1991 (YT leg.); 2 ♂, De-Friz peninsula, 10, 18.YII 1968 (MO leg.).

***Tethea trifolium* (Alphéraky, 1895)**

Saronaga trifolium Alphéraky, 1895: 188 (Southern Primorye, "Sidemi" [now: Besverhovo]).

Tethea trifolium: Tshistjakov, 2006: 192.

DISTRIBUTION: South of Primorskii krai; Japan (Hokkaido, Honshu).

HABITAT. Various types of mixed and broad-leaved forest.

HOST PLANT: *Malus mandshurica*, *Padus avium*.

MATERIAL EXAMINED. Primorskii krai: 1 ♂, Pshenizyno, 24 km S Chuguevka, 4.YI 1973 (YT leg.); 1 ♂, 8 km S Krounovka, 15.YII 1992 (YT leg.); 1 ♂, Gribnoe, 10 km SE Chernigovka, 24.YI 1997 (YT leg.); 2 ♂, Anisimovka, 20.YI - 4.YII 1975 (YT leg.); 1 ♂, same locality, 29.YI 1983 (YT leg.); 1 ♂, 10 km N Zanadvorovka, 5.YII 1984 (YT leg.); 11 ♂, 5 ♀, Kedrovaya Pad' Nature Reserve, 23.YI - 20.YII 1976 (YT leg.); 2 ♂, Ryazanovka, 20 km S Slavyanka, 19, 28 YII 1992 (YT leg.); 1 ♂, De-Friz peninsula, 4.YIII 1954 (D. Kononov leg.); 1 ♂, same locality, 14.YII 1955 (A. Kurenzov leg.); 1 ♂, same locality, 3.YII 1960 (MO leg.); 1 ♂, same locality, 18.YII 1962 (MO leg.); 3 ♂, same locality, 14 - 31.YII 1964 (MO leg.).

***Tethea consimilis* (Warren, 1912)**

Saronaga commifera: Matsumura, 1925: 114 (non Warren, 1912) (Sakhalin Is.: Ichinozawa [now: Pervaya Pad' settl., near Korsakov]).

Saronaga consimilis: Kuwayama, 1967: 79 (Southern Kuriles, Kunashir Is.).

Tethea consimilis: Vasyurin & Tshistjakov, 1979: 102; Tshistjakov et al., 1998: 75; Tshistjakov, 2006: 192; Dubatolov, 1991: 182 (Southern Kuriles, Kunashir Is.: Alekhino, Ivanovsky cape).

DISTRIBUTION: South of Primorskii krai, Southern Sakhalin, Southern Kuriles (Kunashir Is.); North, Central and South-Western China, Korea, Japan.

HABITAT. Various types of mixed and broad-leaved forest.

HOST PLANTS. *Padus avium*, *Sorbus* sp.

MATERIAL EXAMINED. Primorskii krai: 1 ♂, 12 km E Dersu, 16.YI 1990 (YT leg.); 3 ♂, 32 km NE Sandagou [now: Bulyga-Fadeevo], 13.YII 1973 (YT leg.); 2 ♂, 30 km N Chuguevka, 27 - 29.YII 1992 (YT leg.); 1 ♂, Lysaya Mnt., 1500 m above s.l., 19.YII 1973 (V. Vasyurin leg.); 1 ♂, 6 km NE Slinkino, 2.YIII 1995 (YT leg.); 3 ♂, 2 ♀, Anisimovka, 4 - 23.YII 1975 (YT leg.); 3 ♂, 9 km S Anisimovka, 19.YII 1995 (YT leg.); 1 ♂, 12 km E Anisimovka, Litovka Mnt., 1150 m above s.l., 20.YII 1995 (YT leg.). Sakhalinskaya oblast': 1 ♂, Sachalin Is., 20.YIII 1931 (KT leg.); 2 ♂, "Cent. Esp. Sta., Konuma" [now: Yuzhno-Sakhalinsk], 4.YIII 1934 (KT leg.); 1 ♂, Yuzhno-Sakhalinsk, 13.YII 1991 (A. Strel'zov leg.).

***Ochropacha duplaris* (Linnaeus, 1758)**

Palimpsestis duplaris: Sedych, 1979: 294 (Kamchatskaya oblast: Petropavlovsk-Kamchatskii, Kozyrevsk).

Cymatophora duplaris: Lobkova, 1986: 112 (Kamchatskaya oblast: Staryi and Novyi Semyachik, Shumnaya, Tikhaya and Listvennichnaya rivers, Zhupanovo).

Palimpsestis duplaris kamtschadalis Sheljuzhko, 1926: 61; Tshistjakov, 2000: 255 (= *Ocropacha duplaris*).

Palimpsestis duplaris malaisei Nordström, 1929: 5; Tshistjakov, 2000: 255 (= *Ocropacha duplaris*).

Ochropacha duplaris: Tshistjakov, 2000: 255.

DISTRIBUTION: Boreal and subboreal zones of Eurasia from Western Europe up to Kamchatka, Primorskii krai and Sakhalin Island, being recorded from North-Eastern China and Korea.

HABITAT. Various types of forest.

HOST PLANTS. *Alnus* spp., *Betula* spp., *Populus* spp.

MATERIAL EXAMINED. Kamchatskaya oblast': 6 ♂, 2 ♀, Azhabach'e lake, 40 km W Ust'-Kamchatsk, 15.YII 1996 (YT leg.); 2 ♂, 17 km NE Malki, 28.YII 1997 (YT leg.); 1 ♂, Elizovo, 8.YII 1976 (V. Kirpichnikova leg.). Primorskii krai: 2 ♂, 30 km NW Tetyuhe [now: Dal'negorsk], 4.YII 1971 (YT leg.).

***Thogaria tancrei* (Graeser, 1888)**

Cymatophora tancrei Graeser, 1888: 151 (Raddefka, [now: Radde settl.], Jewish autonomy); Staudinger, 1892: 378; Kurentzov, 1938a: 195 (Khor river [Northern Sikhotae-Alin' Range]); Kurentzov, 1938b: 77,81 (Sanhobe [now: Serebryanaya] river).

Palimpsestis tancrei: Kurentzov, 1937: 118 (Snezhnaya Mnt., [Middle Sikhotae-Alin' Range]; Dadyan-Shan [now: Przhevalskii] Range, headstream of Suputinka [now: Komarovka] river).

Thogaria tancrei: Kuwayama, 1967: 79 (Southern Kuriles, Iturup Is.); Tshistjakov, 2006: 193.

Thogaria tokotana Bryk, 1942: 34 (Southern Kuriles, Iturup Is.).

DISTRIBUTION: South of the Russian Far East (South of Khabarovskii krai, Primorskii krai, Southern Sakhalin, Southern Kuriles [Iturup Is.]); North-Eastern and North China, Korea, Japan (Hokkaido).

HABITAT. Various types of mixed and broad-leaved forest.

HOST PLANT. *Padus avium*.

MATERIAL EXAMINED. Primorskii krai: 1 ♂, Lefinskyi leshoz [near Iwanovka], 5.YI 1948 (A. Kurentzov leg.); 1 ♂, Gornotayozhnoe, 20 km SE Ussuryisk, 15.YII 1982 (YT leg.); 1 ♂, same locality, 24.IX 1995 (YT leg.). Sakhalinskaya oblast': 1 ♂, Sachalin Is., "Cent. Esp. Sta., Konuma" [now: Yuzhno-Sakhalinsk], 27.YIII 1933 (Takinosawa leg.); 1 ♂, 1 ♀, same locality, 15.YIII - 11.IX 1934 (Takinosawa leg.); 1 ♀, North Kuriles, Rasshua Is., Beloe lake, 12.YIII 1995 (Yu. Marusik leg.).

***Togaria suzukiana* Matsumura, 1921**

Togaria takaozana Matsumura, 1931: 678, fig. 339; Matsumura, 1933a: 200, pl. 4, fig. 9 (Southern Kuriles, Iturup Is.).

DISTRIBUTION: South of the Russian Far East (South of Primorskii krai, Southern Sakhalin, Northern [Rasshua Is.] and Southern [Iturup Is.] Kuriles); Japan (Hokkaido, Honshu).

HABITAT. Various types of mixed and broad-leaved forest.

MATERIAL EXAMINED. Primorskii krai: 1 ♂, Tigrovoi, 19.IX 1973 (YT leg.); 2 ♂, Anisimovka, 18.IX 1975 (YT leg.). Sakhalinskaya oblast': 3 ♂, 1 ♀, Sachalin Is., "Cent. Esp. Sta., Konuma" [now: Yuzhno-Sakhalinsk], 4.IX 1934 (Horo, Takinosawa leg.); same locality, 15.YIII - 11.IX 1934 (Takinosawa leg.); 1 ♀, North Kuriles, Rasshua Is., Beloe lake, 12.YIII 1995 (Yu. Marusik leg.).

***Parapsestis argenteopicta* (Oberthür, 1879)**

Cymatophora argenteopicta: Oberthür, 1879: 13 (Primorskii krai, Askold Is.); Graeser, 1888: 152 (Khabarovsk); Staudinger, 1892: 379 (Raddevka, Ussuri river, Suifun river [now: Rasdolnaya river], Sutchan [now: Partisansk], Sidemi [now: Besverhovo settl.]).

Parapsestis argenteopicta: Filipjev, 1927: 259 (Tigrovaya); Kurentzov, 1934: 123 (Furugelm Is., South of Primorskii krai); Vasyurin & Tshistjakov, 1979: 102; Tshistjakov et al., 1998: 75; Dubatolov, 1991: 182 (Southern Kuriles, [Kunashir Is.: Alekhino, Ivanovsky cape]); Tshistjakov, 2006: 193.

DISTRIBUTION: South of Khabarovskii krai, Primorskii krai, Southern Kuriles (Kunashir Is.); Western, North-Eastern, North and Central China, Korea, Japan.

HABITAT. Various types of mixed forest and oak woods.

HOST PLANT. *Quercus mongolica*.

MATERIAL EXAMINED Khabarovskii krai: 2 ♂, Low Amur river, Malmyzh, 22.YI, 9.YIII 1974 (V. Mutin leg.). Primorskii krai: 2 ♂, 1 ♀, Glubinnoe, 19.YI 1990 (YT leg.); 1 ♂, 32 km NE Sandagou [now: Bulyga-Fadeevo], 13.YII 1973 (YT leg.); 5 ♂, 2 ♀, Pshenizyno, 24 km S Chuguevka, 24.Y - 30.YI 1999 (YT leg.); 3 ♂, Gribnoe, 10 km SE Chernigovka, 24.YI 1995 (YT leg.); 1 ♂, Lysaya Mnt., 1500 m above s.l., 27.YI 1973 (V. Vasyurin leg.); 1 ♂, Chernigovka, 30.YI 1999 (YT leg.); 1 ♂, Gornotayozhnoe, 20 km SE Ussuryisk, 14.YI 1995 (YT leg.); 6 ♂, 2 ♀, "Suputinskiyi zapovednik" [now: Ussuryiskiyi Nature Reserve], 19.YI - 14.YII 1966 (D. Kononov, Z. Konovalova leg.); 1 ♂, same locality, 13.YII 1990 (YT leg.); 1 ♂, 12.YII 1993 (YT leg.); 1 ♂, 1 ♀, 6 km E Novaya Moskva, 14, 15.YII 1995 (YT leg.); 1 ♂, Brovnichi, 27.YII 1993 (YT leg.); 1 ♂, Tigrovoi, 9.YII 1921 (A. Kurenzov leg.); 1 ♂, Kangaus [now: Anisimovka], 19.YII 1969 (YT leg.); 4 ♂, 3 ♀, same locality, 20.YI -21.YII 1975 (YT leg.); 2 ♂, same locality, 29.YI 1988 (YT leg.); 4 ♂, 10 km N Zanadvorovka, 1 - 6.YIII 1985 (YT leg.); 1 ♂, Barabash, 4.YII 1983 (V. Kononenko leg.); 18 ♂, 7 ♀, Kedrovaya Pad' Nature Reserve, 14.YI - 20.YII 1976 (YT leg.); 1 ♂, same locality, 7.YIII 1983 (YT leg.); 3 ♂, same locality, 28 - 30.YI 1991 (YT leg.); 1 ♂, Ryasanovka, 17.YII 1986 (E. Belyaev leg.); 1 ♂, same locality, 19.YII 1992 (YT leg.); 2 ♂, De-Friz peninsula, 17.YII 1953 (D. Kononov leg.); 1 ♀, same locality, 14.YII 1955 (A. Kurenzov leg.); 1 ♂, same locality, 16.YII 1960 (MO leg.); 4 ♂, same locality, 9.YI - 4.YII 1961 (MO leg.); 2 ♂, same locality, 10.YI - 18.YII 1962 (MO leg.); 1 ♀, same locality, 13.YII 1963 (MO leg.); 2 ♂, Okeanskaya, near Vladivostok, 18.YI - 12.YII 1994 (YT leg.). Sakhalinskaya oblast': 4 ♂, 1 ♀, Kunashir Is., Alehino, 8-17.YII 1962 (N. Asarova leg.).

***Epipsestis ornata obscurata* Tshistjakov, 1987**

Epipsestis ornata obscurata Tshistjakov, 1987: 135; Tshistjakov, 2006: 193.

DISTRIBUTION: South of Primorskii krai.

HABITAT. Mixed and broad-leaved forest with oak.

HOST PLANT. *Quercus mongolica*.

MATERIAL EXAMINED. Primorskii krai: 2 ♂, 4 km E Veselyi Yar, 4.X 1996 (YT leg.); 1 ♂, Chistovodnoe, 20.IX 1990 (YT leg.); 1 ♂, 1 ♀, Gornotayozhnoe, 20 km SE Ussuryisk, 16.IX 1982 (E. Belyaev leg., paratypes); 2 ♂, Tigrovoi, 3 - 19.IX 1973 (YT leg.); 2 ♂, same locality, 3.IX 1975 (V. Kononenko, YT leg.: paratypes); 10 ♂, 3 ♀, 10 km N Zanadvorovka, 2.IX 1984 (YT leg., including holotype and paratypes); 3 ♂, 1 ♀, Kedrovaya Pad' Nature Reserve, 8.IX 1976 (YT leg.); 9 ♂, 4 ♀,

Ryasanovka, 20 km S Slavyanka, 3 - 11.IX 1986 (E. Belyaev leg.); 17 ♂, 11 ♀, same locality, 15 - 17.IX 1987 (YT leg.); 5 ♂, Gamov's peninsula, Telyakovskiy' Bay, 11.IX 1996 (YT leg.); 1 ♂, Gamov's peninsula, Vityaz' Bay, 16.IX 1999 (YT leg.); 1 ♂, Okeanskaya, near Vladivostok, 18.IX 1994 (YT leg.); 1 ♂, Kievka, Lasovskiy Nature reserve, 8.IX 1970 (V. Vasyurin leg., paratype).

***Epipsestis perornata* Inoue, 1972**

Epipsestis perornata: Tshistjakov & Dubatolov, 1987: 137; Tshistjakov, 2006: 193.

DISTRIBUTION: South of Primorskii krai; Korea, Japan (Hokkaido, Honshu, Shikoku).

HABITAT. Mixed and broad-leaved forest with oak.

HOST PLANT. *Quercus mongolica*.

MATERIAL EXAMINED Primorskii krai: 2 ♂, Tigrovoi, 19.IX 1975 (YT leg.); 2 ♂, 3 ♀, Kedrovaya Pad' Nature Reserve, 26.IX 1986 (V. Dubatolov leg.); 1 ♂, Ryasanovka, 20 km S Slavyanka, 15.IX 1987 (YT leg.); 1 ♂, same locality, 8.X 1992 (YT leg.).

***Epipsestis nikkoensis* Matsumura, 1921**

Figs 5, 6

DISTRIBUTION: South of Primorskii krai (recorded for the first time for Russia); Eastern and Central China, Korea, Japan (Honshu), southern Himalayas (Nepal). Recently was reported also from India, Bhutan and northern Indochina (Myanmar, Thailand, Vietnam), but without any reference of observed material from these regions (Kim et al., 2006).

HABITAT. Mixed and broad-leaved forest with oak.

MATERIAL EXAMINED Primorskii krai: 1 ♂, Gornotayozhnoe, 20 km SE Ussuryisk, 10.X 1987 (MO leg.); 2 ♀, Ryasanovka, 20 km S Slavyanka, 4 - 11.IX 1986 (E. Belyaev leg.); 3 ♂, 2 ♀, same locality, 4 - 7.X 1987 (YT leg.).

***Achlya flavicornis jesoensis* (Matsumura, 1927)**

Achlya flavicornis jesoensis: Tshistjakov, 2006: 193.

DISTRIBUTION: South of Russian Far East (Amurskaya oblast, South of Khabarovskii krai, Primorskii krai, Southern Sakhalin); North-Eastern China, Korea, Japan (Hokkaido).

HABITAT. Various types of mixed and broad-leaved forest.

HOST PLANT. *Betula* spp.

MATERIAL EXAMINED Amurskaya oblast': 1 ♂, tract Muchino near Blagoveshchensk, 2.Y 1995 (A. Strel'zov leg.). Khabarovskii krai: 1 ♂, Silinskiy park,

Komsomol'sk-on-Amur, 7.Y 1975 (V. Mutin leg.). Primorskii krai: 1 ♂, 6 km S Veselyi, upper Arsen'evka river, 1.Y 1996 (YT leg.); 3 ♂, Gornotayozhnoe, 20 km SE Ussuryisk, 28.IY 1982 (YT leg.); 4 ♂, 1 ♀, same locality, 25,27.IY 1995 (E. Belyaev leg.); 1 ♂, 1 ♀, same locality, 26.IY 1996 (YT leg.); male, Kaimanovka, 24.Y 1991 (YT leg.); 3 ♂, 1 ♀, Okeanskaya, near Vladivostok, 17, 23.IY 1996 (YT leg.). Sakhalinskaya oblast': 1 ♂, Sachalin Is., "Cent. Esp. Sta., Konuma" [now: Yuzhno-Sakhalinsk], 5.Y 1933 (KT leg.); 8 ♂, 3 ♀, same locality, 1.IY - 19.Y 1934 (KT leg.).

***Achlya hoerburgeri* (Schawerda, 1924)**

Polyploca hoerburgeri Schawerda, 1924: 90 (Vladivostok).
Achlya hoerburgeri: Tshistjakov, 2006: 193.

DISTRIBUTION: Amurskaya oblast, Primorskii krai.

HABITAT. Mixed and broad-leaved forest with oak.

MATERIAL EXAMINED. Amurskaya oblast': 1 ♀, Sadovyi, near Blagoveschensk, 29.IY 1973 (N. Maschenko leg.). Primorskii krai: 1 ♂, Gornotayozhnoe, 20 km SE Ussuryisk, 28.IY 1982 (YT leg.); 6 ♀, same locality, 24 - 28.IY 1995 (E. Belyaev leg.).

***Achlya longipennis* Inoue, 1972**

Achlya longipennis: Tshistjakov, 2006: 193.

DISTRIBUTION: South of Primorskii krai; Japan (Hokkaido).

HABITAT. Various types of mixed and broad-leaved forest.

MATERIAL EXAMINED Primorskii krai: 1 ♂, 24 km N Yasnoe, 3.Y 1996 (YT leg.); 1 ♂, El'dorado Mnt., 1350 m above s.l., 3.YI 1979 (V. Vasyurin leg.); 1 ♂, Gornotayozhnoe, 20 km SE Ussuryisk, 4.Y 1981 (YT leg.); 1 ♂, same locality, 20.YI 1982 (YT leg.); 1 ♂, 1 ♀, same locality, 24.IY 1995 (E. Belyaev leg.); 3 ♂, Kaimanovka, 24.Y 1991 (YT leg.); 1 ♂, Ussuryiskyi Nature Reserve, 8.Y 1995 (YT leg.); 1 ♂, Kedrovaya Pad' Nature Reserve, 30.YI 1978 (YT leg.); 3 ♂, female, Okeanskaya, near Vladivostok, 17, 23.IY 1996 (YT leg.).

***Shinploca shini* Kim, 1995**

Figs 3, 4

DISTRIBUTION: South of Russian Far East (Amurskaya oblast, South of Khabarovskii krai, Primorskii krai) (recorded for the first time from Russia); Korea.

HABITAT. Various types of mixed and broad-leaved forest.

MATERIAL EXAMINED. Amurskaya oblast': 2 ♂, Blagoveschenka, near Blagoveschensk, 15.Y 1995 (A. Strel'zov leg.). Primorskii krai: 2 ♂, Gornotayozhnoe, 20 km SE Ussuryisk, 28, 29.IY 1981 (YT leg.); 8 ♂, 3 ♀, same locality, 24 - 27.IY 1995 (E. Belyaev leg.); 1 ♂, Kaimanovka, 24.Y 1991 (YT leg.); 1 ♂, Okeanskaya, near Vladivostok, 7.Y 1996 (YT leg.).

***Neoploca arctipennis* (Butler, 1878)**

Asphalia nigrofascicula Graeser, 1888: 152 (Khabarovsk); Staudinger, 1892: 379.

Polyploca nigrofasciata (!): Seitz, 1933: 193.

Neoploca arctipennis: Tshistjakov, 2006: 194.

DISTRIBUTION. South of Russian Far East (Amurskaya oblast, South of Primorskii krai); Korea, Japan.

HABITAT. Various types of mixed and broad-leaved forest with oak and oak woods.

HOST PLANT. *Quercus mongolica*.

MATERIAL EXAMINED. Amurskaya oblast': 1 ♂, tract Muchino near Blagoveschensk, 6.Y 1995 (A. Strel'zov leg.). Primorskii krai: 2 ♂, Gornotayozhnoe, 20 km SE Ussuryisk, 28.IY - 6.Y 1981 (YT leg.); 10 ♂, 2 ♀, same locality, 25.IY - 8.Y 1995 (E. Belyaev leg.); 1 ♂, same locality, 26.IY 1996 (YT leg.); 2 ♂, Kaimanovka, 7, 8.Y 1964 (A. Zvetaev leg.); 1 ♂, Okeanskaya, near Vladivostok, 17.YI 1996 (YT leg.); 2 ♂, 16 km W Zanadvorovka, 4.Y 1997 (YT leg.).

***Notoploca nigripunctata zolotarenkoi* Dubatolov, 1987**

Notoploca nigripunctata zolotarenkoi: Dubatolov, 1987: 62; Tshistjakov, 2006: 194.

DISTRIBUTION: South of Primorskii krai; Korea, China.

HABITAT. Mixed and broad-leaved forest with oak.

MATERIAL EXAMINED. Primorskii krai: 6 ♂, 10 km N Zanadvorovka, 2.IX 1984 (YT leg.); 1 ♂, 1 ♀, Kedrovaya Pad' Nature Reserve, 5 - 18.IX 1969 (G. Zolotarev leg.: paratypes); 7 ♂, 1 ♀, Ryasanovka, 20 km S Slavyanka, 2 - 5.IX 1986 (E. Belyaev leg.); 1 ♂, same locality, 15.IX 1987 (YT leg.).

***Neodaruma tamanukii* Matsumura, 1933**

Neodaruma tamanukii Matsumura, 1933a: 194 (Sakhalin Is., Konuma [now: Yuzno-Sakhalinsk]).

Neodaruma tamanukii: Tshistjakov, 2006: 194.

DISTRIBUTION: South of Primorskii krai, Southern Sakhalin; Japan (Hokkaido, Honshu).

HABITAT. Various types of mixed and oak forest.

MATERIAL EXAMINED Primorskii krai: 1 ♂, 6 km S Veselyi, upper Arsen'evka river, 1.Y 1996 (YT leg.); 2 ♂, El'dorado Mnt., 1350 m above s.l., 3.YI 1979 (V. Vasyurin leg.); 8 ♂, 3 ♀, Gornotayozhnoe, 20 km SE Ussuryisk, 28.IY 1982 (YT leg.); 3 ♂, 2 ♀, same locality, 24 - 27.IY 1995 (E. Belyaev leg.); 4 ♂, 1 ♀, same locality, 23, 26.IY 1996 (YT leg.); 3 ♂, Kaimanovka, 24.Y 1991 (YT leg.); 2 ♂, Kedrovaya Pad' Nature Reserve, 30.YI 1978 (YT leg.); 9 ♂, 2 ♀, same locality, 22.IV

1979 (Kononenko leg.); 1 ♂, Okeanskaya, near Vladivostok, 7.Y 1996 (YT leg.). Sakhalinskaya oblast': 1 ♂, Sachalin Is., "Cent. Esp. Sta., Konuma" [now: Yuzhno-Sakhalinsk], 20.Y 1931 (KT leg.); 4 ♂, same locality, 4, 5Y 1933 (KT leg.); 5 ♂, 3 ♀, same locality, 4.IY - 19.Y 1934 (KT leg.).

REFERENCES

- Alphéraky, S. 1895. Lépidoptères nouveaux. – Deutsche Ent. Zeit. Iris. Dresden 8: 180-202.
- Alphéraky, S. 1897. Lépidoptères de l' Amour et de la Corée. – In: Romanoff N.M. Mémoires sur les Lépidoptères. St. Petersb., 10: 51-184.
- Bremer, O. 1861. Neue Lepidopteren aus Ost-Sibirien und dem Amur-lande gesammelt von Radde und Maack. – Bull. Acad. Imp. Sci., St. Petersb., 3: 462-496.
- Bremer, O. 1864. Lepidopteren Ost-Sibirien insbesondere des Amur-landes gesammelt von den Herren G. Radde, R. Maack, und P. Wulffius. – Mem. Acad. Imp. Sci. St. Petersb., 8(1): 1-103.
- Bryk, F. 1942. Zur Kenntnis der Gross-Schmetterlinge der Kurilen. – Deutsch. Entomol. Ztschr. Iris, 51: 3-90.
- Dubatolov, V.V. 1991. Moths from Southern Sakhalin and Kunashir, collected in 1989. Part 1. Macroheterocera, excluding Geometridae and Noctuidae. – Japan Heterocerists' J., 161: 182-187.
- Dubatolov, V.V. 1987. [New species of the Thyatirid-moth (Lepidoptera, Thyatiridae) for the USSR fauna with description of new subspecies]. – In: Cheshuekrylye Dal'nego Vostoka. Vladivostok: DVO AN SSSR: 61-64. (In Russian).
- Graeser, L. 1888. Beiträge zur Kenntniss der Lepidopteren-fauna des Amurlandes. – Berl. Entomol. Ztschr., 32(1): 33-153.
- Houlbert, C. 1921. Revision monographique de la famille des Cymatophoridae. – In: Oberthür, C. Études Lépid. Comp. Rennes 18(2): 25-244.
- Filipjev, N.N. 1927. Zur Kenntniss der Heteroceren (Lepidoptera) von Sutshan (Ussuri Gebiet). – Ann. Mus. Zool. Acad. Sci. URSS, 28: 219-264.
- Kim M.Y., Lee H.K., Ronkay L. & Park K.T. 2006. A Review of the Korean Thyatiridae (Lepidoptera), including the Mt. Chanbai-shan. – J. Asia-Pacific Entomol., 9(3): 203-221.
- Kurentzov, A.I. 1922. [To lepidoptera fauna in the vicinity of Nikolsk-Ussuriisk. (List based on observations in 1920)]. – Zapiski Yuzhno-Ussuriskogo otdeleniya Geograph. obshchestva, Vladivostok, 1: 3-44. (In Russian).
- Kurentzov, A.I. 1934. [Lepidoptera of the Furugelm Island (Japanese Sea)]. – Vestnik DV Filiala AN SSSR, 10: 122-124. (In Russian).
- Kurentzov, A.I. 1935a. [Lepidoptera of the basin Iman and Kolumbe rivers– Vestnik DV Filiala AN SSSR, 13: 49-70. (In Russian).
- Kurentzov, A.I. 1935b. [To the knowledge on Lepidoptera fauna of the Soviet Sakhalin]. – Vestnik DV Filiala AN SSSR, 14: 167-170. (In Russian).
- Kurentzov, A.I. 1937a. [On distribution of *Cymatophora tancrei* Graes. (Lepidoptera, Cymatophoridae) in the Ussurian region]. – Vestnik DV Filiala AN SSSR, 23: 120-121. (In Russian).
- Kurentzov, A.I. 1937b. [New and interesting Lepidoptera from the Sikhotae-Alin']. – Vestnik DV Filiala AN SSSR, 26: 115-132. (In Russian).
- Kurentzov, A.I. 1938a. [On vertical zonation in the basin of Khor river. – Vestnik DV Filiala AN SSSR, 27: 194-197. (In Russian).

- Kurentzov, A.I. 1938b. [Materials to the Lepidoptera fauna of the Ternei district and adjacent parts of the sea coast]. – Trudy Sikhotae-Alinskogo gos. zapovednika 2: 69-85. (In Russian).
- Kurentzov, A.I. 1939. [Injurious Moths (Macrolepidoptera) of trees and shrubs of the Ussuri territory]. – Trudy Gornotayozhnoi Stanzii DV Filiala Akademii Nauk SSSR, 3: 107-210. (In Russian).
- Kuwayama, S. 1967. Insect fauna of the Southern Kurile islands. Sapporo. 225 pp.
- Matsumura, S. 1925. An Enumeration of the Butterflies and Moths from Saghalien, with Descriptions of new Species and Subspecies. – Journ. Coll. Agric. Hokkaido imp. Univ., 15(3): 83-196.
- Matsumura, S. 1929. New moths from Kuriles. – Insecta Matsumurana 3(4): 165-168.
- Matsumura, S. 1931. 6 000 illustrated Insects of the Japan Empire. Tokyo, 1497 pp. + 10 pls.
- Matsumura, S. 1933a. New species of Cymatophoridae of Japan and Formosa. – Insecta Matsumurana 7(4): 190-201 + Pl. IV.
- Moltrecht, A.K. 1929. Ueber die geographische Verbreitung der Macrolepidopteren des Ussuri- und Amur-Gebietes. – Zapiski Vladivostok. Otdeleniya Russk. Geogr. obshchestva, Vladivostok. 70 pp.
- Nordström, F. 1929. Entomologische Ergebnisse der Schwedischen Kamchatka-Expedition 1920-1922. Lepidoptera II. – Arkiv Zool., 20A(12): 1-6.
- Oberthür, C. 1879. Diagnoses d' Espèces nouvelles de Lépidoptères de l'île Askold. Rennes. 16 pp.
- Oberthür, C. 1880. Faune de Lépidoptères de l'île Askold. Première Partie. – Études d'Entomologie. Rennes, 5: I-X, 1-88, pls 1-9.
- Schawerda, K. 1924. Berichte der Section für Lepidopterologie, Versammlung am 6. April 1923. – Verh. zool.-bot. Ges. Wien, 73: 87-90.
- Sedyh, K.F. 1979. [Lepidoptera (Macrolepidoptera) of the Kamchatka fauna and adjacent provinces]. – Entomol. Obozr., 58(2): 288-298. (In Russian).
- Staudinger, O. 1887. Neue Arten und Varietäten von Lepidopteren aus dem Amur-Gebiete. – In: Romanoff, N.M. Mémoires sur les Lépidoptères. St. Petersb., 3: 126-232, Pls VI-XII, XVI, XVII.
- Staudinger, O. 1892. Die Macrolepidopteren des Amurgebiets. I Theil. Rhopalocera, Sphinges, Bombyces, Noctuae. – In: Romanoff, N.M. Mémoires sur les Lépidoptères. St. Petersb., 4: 83-658, Pls IV-XIV.
- Tshistjakov, Yu.A. 1992. Fam. Thyatiridae. – In: Nasekomye Khinganskogo zapovednika. Vladivostok: Dalnauka: 137-138. (In Russian).
- Tshistjakov, Yu.A. 2000. An annotated checklist of larger moths (Lepidoptera: Heterocera, except Geometridae and Noctuidae) of the Kamchatka peninsula, with notes on their zoogeography. – Natural History Research, Special Issue 7: 253-266.
- Tshistjakov, Yu.A. 2006. [An annotated check-list of Larger Moths (Lepidoptera: Heterocera, except Geometridae and Noctuidae) of the Kedrovaya Pad' Nature Reserve]. – In: Flora and Fauna of Kedrovaya Pad Nature Reserve. Vladivostok: Dalnauka: 181-236. (In Russian).
- Tshistjakov, Yu.A. & Dubatolov, V.V. 1987. [The thyatirid-moths of the genus *Epipestis* Matsumura, 1921 (Lepidoptera, Thyatiridae) of the fauna of the USSR]. – In: Nove dannye po systematike nasekomyh Dal'nego Vostoka. Vladivostok: DVO AN SSSR: 133-137. (In Russian).

Tshistjakov, Yu.A., Keitaro, Eda & Belyaev, E.A. 1998. A contribution to the knowledge of the larger moth fauna (Lepidoptera, Macrolepidoptera) of Mt. Litovka (Primorye territory, Russia). – Trans. lepid. Soc. Japan, 49(1): 73-87.

Vasyurin, V.D. & Tshistjakov, Yu.A. 1979. [Material on moth (Macrolepidoptera) fauna of high mountain belt of the Southern Sikhotae-Alin Range]. – In: Biologicheskie issledovania na Dal'nem Vostoke. Vladivostok: DVNZ AN USSR: 95-105. (In Russian).

© **Far Eastern entomologist (Far East. entomol.)** Journal published since October 1994.

Editor-in-Chief: S.Yu. Storozhenko

Editorial Board: A.S. Lelej, V.S. Sidorenko, N.V. Kurzenko

Address: Institute of Biology and Soil Science, Far East Branch of Russian Academy of Sciences, 690022, Vladivostok-22, Russia.

E-mail: entomol@ibss.dvo.ru FAX: (4232) 310 193