

**NEW RECORDS OF SHINING LEAF CHAFER BEETLES  
(COLEOPTERA: SCARABAEIDAE, RUTELINAE) FROM THAILAND  
AND LAOS**

**T. Hongsuwong<sup>1,2)</sup>, W. Jaitrong<sup>2)</sup>, W. Tasen<sup>3,\*</sup>, C. Zorn<sup>4)</sup>**

1) Department of Entomology, Faculty of Agriculture, Kasetsart University, Lad Yao, Chatuchak, Bangkok, 10900 Thailand. E-mail: Jason13ward@gmail.com

2) Natural History Museum, National Science Museum, Technopolis, Khlong 5, Khlong Luang, Pathum Thaini, 12120 Thailand.

3) Department of Forest Biology, Faculty of Forestry, Kasetsart University; and Advanced Studies in Tropical Natural Resources. NRUKU, Kasetsart University, Bangkok, 10900, Thailand. \*Corresponding author, E-mail: fforwct@ku.ac.th

4) Rostocker Straße 1a, 17179, Gnoien, Germany. E-mail: czorn70@hotmail.com

**Summary.** Three species of shining leaf chafer beetles (subfamily Rutelinae) are recorded for the first time from Thailand: *Rutelarcha quadrimaculata* Waterhouse, 1874 and *Parastasia anomala* Arrow, 1899 (tribe Rutelini) and *Mimela campyloclados* Prokofiev et Zorn, 2016 (tribe Anomalini). Additionally the last species is new for the fauna of Laos. Habitus and male genitalia of the included species are described and illustrated. A checklist of the species of the genera *Mimela*, *Parastasia* and *Rutelarcha* of Thailand is given.

**Key words:** Coleoptera, *Mimela*, *Parastasia*, *Rutelarcha*, distribution, Southeast Asia.

**Т. Хонгсувонг, В. Ятронг, В. Тасен, К. Зорн. Новые для Таиланда и Лаоса указания хрущиков (Coleoptera: Scarabaeidae, Rutelinae) // Дальневосточный энтомолог. 2020. N 398. С. 8-17.**

**Резюме.** Впервые для Таиланда приводятся три вида хрущиков (подсемейство Rutelinae): *Rutelarcha quadrimaculata* Waterhouse, 1874 и *Parastasia anomala* Arrow, 1899 (триба Rutelini) и *Mimela campyloclados* Prokofiev et Zorn, 2016 (триба Anomalini). Последний из перечисленных видов также является новым для фауны Лаоса. Приведены описания и иллюстрации жуков и гениталий самцов этих видов. Составлен список видов родов *Mimela*, *Parastasia* и *Rutelarcha* фауны Таиланда.

**INTRODUCTION**

Shining leaf chafers (subfamily Rutelinae) are sapro-phytophagous beetles, with a nearly worldwide distribution (Machatschke, 1972). Recently, 38 genera have been recorded from Southeast Asia (Krajčik, 2007; Machatschke, 1972; Ratcliffe *et al.*, 2018). Among them, 17 genera were recorded from Thailand (Arrow, 1917; Hirasawa, 1989; Kuijten, 1988, 1992; Miyake, 1989; Kobayashi, 1991, 2012; Kobayashi & Fujioka, 2013; Krajčik, 2007; Machatschke, 1972; Ohaus, 1932b; Muramoto, 2006; Sabatinelli, 1994, 1997; Nagai & Hirasawa, 1991; Ek-Amnuay, 2002; Wada, 1988, 1998a, 1998b, 2015; Young, 2002).

In the course of the present study, which is mainly based on the examination of Thai ruteline material deposited in the Natural History Museum of the National Science Museum, Khlong Luang district, Pathum Thani province, Thailand, we found new country records for species of the genera *Mimela* Kirby, 1825 and *Parastasia* Westwood, 1841 and a new country record for the genus *Rutelarcha* Waterhouse, 1874.

Seven species of *Parastasia* and seventeen species of *Mimela* were hitherto known from Thailand (Arrow, 1917; Kuijten, 1988, 1992; Prokofiev & Zorn, 2016; Sabatinelli, 1994; Wada, 2015; Wada & Muramoto, 1999; see Table 1). Here, we are going to add another species for each of these genera for the fauna of Thailand. Additionally, we provide a new country record for *Mimela campyloclados* Prokofiev et Zorn, 2016 for Laos.

## MATERIAL AND METHODS

This study is based on specimens deposited in the Natural History Museum of the National Science Museum, Khlong Luang district, Pathum Thani province, Thailand and in the personal collection of the first author. Male genitalia were extracted from *Parastasia anomala* Arrow, 1899 and *Mimela campyloclados* Prokofiev et Zorn, 2016, then mounted on triangular papers. Morphological observations were made with a ZEISS Dicovery V12 stereomicroscope. The images were taken by a Nikon D7200 with Nikon AF-S Micro NIKKOR 60mm.

The following body parts were measured using a digital caliper: **TL** – Total length, measured from anterior margin of clypeus to posterior margin of elytra; **EW** – Elytral width, measured at the middle; **PL** – Pronotal length, measured at the middle; **PW** – Pronotal width, measured at the middle.

Abbreviations of the type depositories and others are as follows: **BMNH** – The Natural History Museum, London, UK; **CAP** – Collection Artem Prokofiev, Moscow, Russia; **CCZ** – Collection Carsten Zorn, Gnoien, Germany; **CTH** – Collection Thitipong Hongsuwong, Bangkok, Thailand; **THNHM** – Thailand Natural History Museum, Khlong Luang, Patthumthani, Thailand.

## NEW RECORDS

### Tribe Rutelini MacLeay, 1819

#### *Rutelarcha quadrimaculata* Waterhouse, 1874

Figs 1–6

*Rutelarcha quadrimaculata* Waterhouse, 1874: 52. Type Locality: Penang, Malaysia (BMNH).

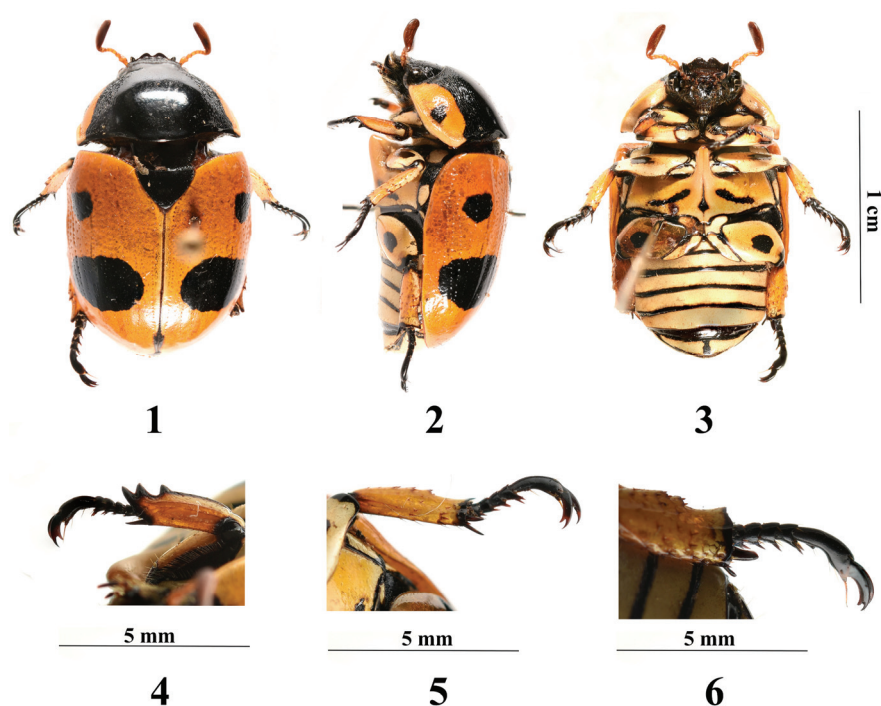
*Rutelarcha quadrimaculata*: Westwood, 1875: 235; Nonfried, 1891: 355; Ohaus, 1900: 260; Ohaus, 1918: 39; Ohaus, 1932a: 122; Kuijten, 1988: 79; Kuijten, 1992: 19; Wada, 1988: 5, 2015: table III-2.

**MATERIAL EXAMINED. Thailand:** Trang province, Huai Yot District, Huai Yot Sub-district, 6.III 2019, 1 female (THNHM-I-09976), S. Amuntaikul & P. Wannaput leg.

**MEASUREMENTS. Female:** TL 15.6 mm; EW 9.4 mm; PW 5.1 mm; PL 8.3 mm.

**DIAGNOSIS.** *Rutelarcha quadrimaculata* is a conspicuous species, which can be distinguished from the only other known species in this genus (*R. bakeri* Ohaus, 1915 from the Philippines) and similar species in the closely related genera *Cyphelytra* Waterhouse, 1875 and *Lutera* Westwood, 1875 by the combination of the following characters: head black, anterior clypeal margin medially with two weak denticles; lateral face of pronotum densely longitudinally striated. Pronotum largely black with its lateral face yellowish orange, with black spot located in middle of orange area; elytra with several rows of rounded punctures and smooth and shiny interspaces.

Ground color of elytra yellowish orange, with small black spot behind humeral callus and large transverse spot in posterior half (Figs 1–2); mesosternal process extending antero-ventrally beyond base of mesocoxa (Fig. 3).



Figs 1–6. *Rutelarcha quadrimaculata*, Thailand: Trang province, female: 1 – habitus, dorsal view; 2 – habitus, lateral view; 3 – habitus, ventral view; 4 – fore leg; 5 – middle leg; 6 – hind leg.

**DISTRIBUTION.** Thailand (**new record**), Borneo (Ohaus, 1900, 1932a; Wada, 2015), West Malaysia (Kuijten, 1988; Ohaus, 1900; Waterhouse, 1874) and Sumatra (Ohaus, 1918).

**REMARKS.** *Rutelarcha quadrimaculata* has a typical sundaic distribution. The record in the present study is the northernmost in its distribution range. A larva of this species was collected from a rotten log.

***Parastasia anomala* Arrow, 1899**

Figs 7–12

*Parastasia anomala* Arrow, 1899: 495. Type Locality: Penang, Malaysia (BMNH).

*Parastasia anomala*: Ohaus, 1900: 252; Ohaus, 1932b: 130, Ohaus, 1934: 103; Kuijten, 1992: 25.

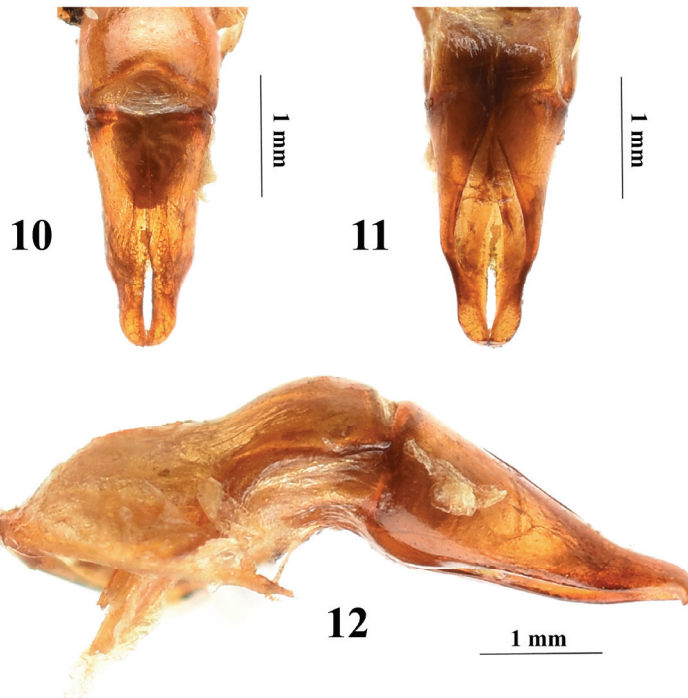
**MATERIAL EXAMINED.** **Thailand:** Nakhon Si Thammarat province, Khao Nan National Park, headquarters, light trap, 28.III 2007, 1 male (THNHM-I-09977), T. Jeenthong leg.

MEASUREMENTS. *Male*: TL 12.5 mm; EW 6.6 mm; PW 4.5 mm; PL 6.0 mm.

DIAGNOSIS. *Adult male*. *Parastasia anomala* is member of the *westwoodi*-group (Wada, 2015), which is characterized by the combination of the following characters: setigerous pun-



Figs 7–9. Figs 7–9. *Parastasia anomala*, Thailand: Nakhon Si Thammarat province, male: 7 – habitus, dorsal view; 8 – habitus, lateral view; 9 – habitus, ventral view.



Figs 10–12. *Parastasia anomala*, Thailand: Nakhon Si Thammarat province, male: 10 – genital paramere, dorsal view; 11 – genital paramere, ventral view; 12 – genital paramere, right lateral view.

ctures on propygidium, setose pygidium in males; mesotarsomere 5 in males equal in length or longer than mesotarsomeres 1 to 4, outer claw of mesotarsus in female widely and deeply split. Within the *westwoodi*-group, *P. anomala* is separated from the other species by the combination of the following characters: incomplete basal bead of pronotum, truncate clypeus, clypeal apex with two denticles, lower apex of mandibular plate without denticles, lateral region of pronotum with fovea, apex of labrum narrowly truncate for less than 1/3 the width, metasternum produced to the apex of mesocoxa. Moreover, the inner protarsal claw in males is distinctly larger than the outer claw and slightly incised at the dorsal margin. *Parastasia anomala* is superficially also similar to *Parastasia selangorica* Kuijten, 1992 in having a small body size and reddish coloration. However, *P. selangorica* belongs to the *discolor*-group (Wada, 2015), which differs from the *westwoodi*-group by the simple protarsal claws in both sexes, the propygidium lacking setae and a glabrous pygidium in males. *Male genitalia*. Symmetric aedeagus; paramere not overlapping each other, lateral margins sinuate before apexes, ventral margin of paramere with a membraneous extension towards middle (Figs 10–11). In lateral view, paramere subtriangular, its dorsal outline almost straight, while ventral outline sinuate and hook-shaped apically (Fig. 12).

**DISTRIBUTION.** Thailand (**new record**), Borneo (Arrow, 1899; Ohaus, 1900; Wada, 2015), West Malaysia (Arrow, 1899; Ohaus, 1932b; Wada, 2015), Sumatra (Wada, 2015).

**REMARKS.** *Parastasia anomala* has a sundaic distribution. The record in the present study is the northernmost in its distribution range. The single specimen was collected from a wet seasonal tropical rainforest using a light trap.

### Tribe Anomalini Streubel, 1839

#### *Mimela campyloclados* Prokofiev et Zorn, 2016

Figs 13–24

*Mimela campyloclados* Prokofiev & Zorn, 2016: 331. Type locality: Binh Thuan, Vietnam (CAP).

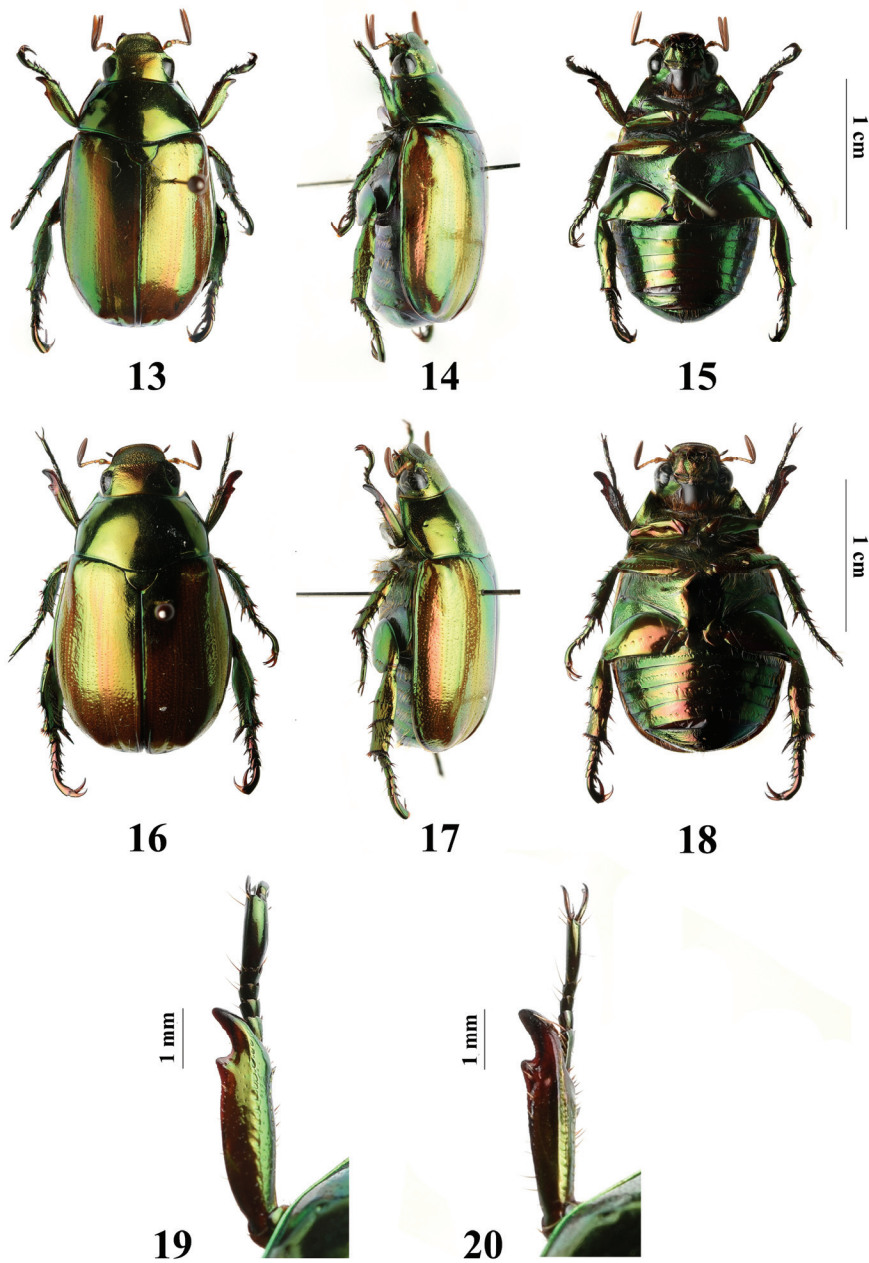
**MATERIAL EXAMINED.** **Thailand:** Chantaburi province, Khao Kitchakut district, Pluang subdistrict, 29.III 2019, 2 males (THNHM–I–09927, THNHM and CTH) and 2 females (THNHM–I–09928, THNHM and CTH), T. Hongsuwong leg.; **Laos:** Sekong-Salavan province border region, ca. 51 km N Sekong, Ho Chi Minh trail, 15°48.1'N, 106°39.4'E, ca. 580m, 13–15.V 2010, 1 male (CCZ), St. Jakl leg.; **Vietnam:** Đắk Nông province, Quảng Sơn, V. 2018, 2 males (CCZ), local collector leg.

**MEASUREMENTS.** *Male* (n = 2): TL 18.5–18.9 mm; EW 9.8–10.1 mm; PW 4.3–4.5 mm; PL 8.2–8.3 mm. *Female* (n = 2): TL 18.5–18.7 mm; EW 10.5–10.8 mm; PW 4.6–4.8 mm; PL 8.0–8.1 mm.

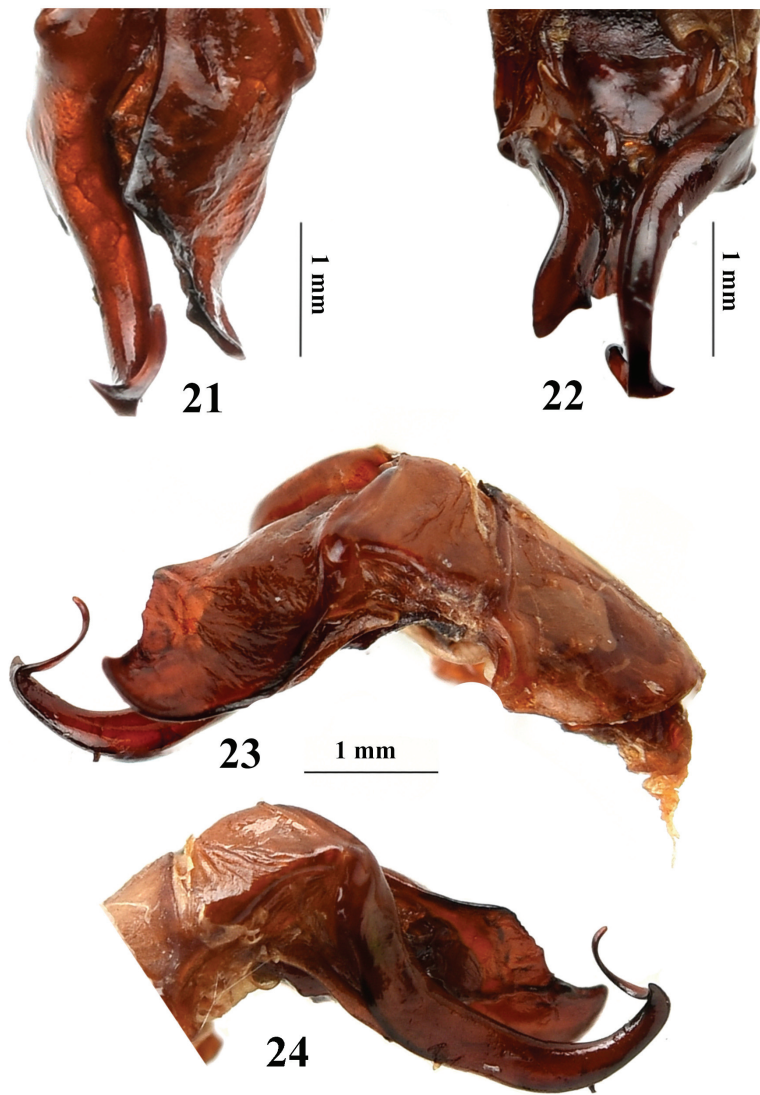
**DIAGNOSIS.** *Adult.* *Mimela campyloclados* is most similar to *Mimela ignistriata* Lin, 1990 (from Northern Thailand and southern China). This species can be separated from the latter by the more weakly expressed fiery red to purple oblique stripes on elytra and a different aedeagus with a less strongly bent left paramere in *Mimela campyloclados*. *Male genitalia*. Asymmetric aedeagus (see Figs 21–24).

**DISTRIBUTION.** South Vietnam (Prokofiev & Zorn, 2016), Laos (**new record**), and Thailand (**new record**). *Mimela campyloclados* is only known from scattered records, which are all situated on Indochina Peninsula.

**REMARKS.** This species is feeding on *Mangifera* species (based on own observation). Some adults were attracted to light.



Figs 13–20. *Mimela campyloclados*, Thailand: Chantaburi province, 13–15, 19 – male: 13 – habitus, dorsal view; 14 – habitus, lateral view; 15 – habitus, ventral view; 19 – fore leg; 16–18, 20 – female: 16 – habitus, dorsal view; 17 – habitus, lateral view; 18 – habitus, ventral view; 20 – fore leg.



Figs 21–24. *Mimela campyloclados*, Thailand: Chantaburi province, male genitalia: 21 – dorsal view; 22 – ventral view; 23 – left lateral view; 24 – right lateral view.

**LIST OF THE SPECIES OF THE GENERA *MIMELA*, *PARASTASIA* AND  
*RUTELARCHA* RECORDED FROM THAILAND**

List of eighteen species of *Mimela*, eight species of *Parastasia* and one species of *Rutelarcha* known from Thailand is given below (Table 1).

Table 1. Checklist of genera *Mimela*, *Parastasia* and *Rutelarcha* of Thailand

Species	Distribution in Thailand (provinces)	Note
<i>Mimela amabilis</i> Arrow, 1908	Ranong	Arrow, 1917
<i>Mimela bouchardi</i> Sabatinelli, 1994	Chiang Mai	Sabatinelli, 1994
<i>Mimela campyloclados</i> Prokofiev et Zorn, 2016	Chantaburi	<b>New record</b>
<i>Mimela deretzi</i> Paulian 1959	Chiang Mai, Phrae	Sabatinelli, 1994
<i>Mimela despumata</i> Ohaus, 1915	Chiang Mai	Sabatinelli, 1994
<i>Mimela fererroi</i> Sabatinelli, 1994	Chiang Mai	Sabatinelli, 1994
<i>Mimela hirtipyga</i> Lin, 1966	Chiang Mai	Sabatinelli, 1994
<i>Mimela ignistriata</i> Lin, 1990	Chiang Mai	Sabatinelli, 1994
<i>Mimela inscripta</i> (Nonfried, 1891)	Chiang Rai, Chiang Mai, Mae Hong Son, Nakhon Si Thammarat	Sabatinelli, 1994
<i>Mimela indosinica</i> Prokofiev et Zorn, 2016	Loei, Ubon Ratchathani, Phitsanulok, Trat	Prokofiev & Zorn, 2016
<i>Mimela linpingi</i> Sabatinelli, 1994	Chiang Mai, Loei	Sabatinelli, 1994
<i>Mimela malicolor</i> Lin, 1990	Chiang Mai	Sabatinelli, 1994
<i>Mimela ohausi</i> Arrow, 1908	Northern Thailand, Loei	Prokofiev & Zorn, 2016
<i>Mimela passerinii diana</i> Lin, 1993	Chiang Mai	Sabatinelli, 1994
<i>Mimela rectangular</i> Lin, 1990	Thailand	Prokofiev & Zorn, 2016
<i>Mimela schulzei</i> Sabatinelli, 1994	Chiang Mai, Lampang	Sabatinelli, 1994
<i>Mimela splendens</i> (Gyllenhal, 1817)	Chiang Mai	Sabatinelli, 1994
<i>Mimela viriditestacea</i> Ohaus, 1932	Nakhon Si Thammarat	Ohaus, 1932b
<i>Parastasia anomala</i> Arrow, 1899	Nakhon Si Thammarat	<b>New record</b>
<i>Parastasia birmana</i> Arrow, 1899	Chiang Rai, Chiang Mai, Nakhon Ratchasima, Chanthaburi, Trat	Wada, 2015
<i>Parastasia indica</i> Ohaus, 1898	Nan, Chiang Mai	Kuijten, 1992; Wada, 2015
<i>Parastasia masumoto</i> Wada et Muramoto, 1999	Chiang Mai	Wada & Muramoto, 1999; Wada, 2015
<i>Parastasia selangorica</i> Kuijten, 1992	Chiang Mai, Chanthaburi	Wada, 2015
<i>Parastasia sulcipennis</i> Gestro, 1888	Chiang Mai	Wada, 2015
<i>Parastasia westwoodii</i> Westwood, 1842	Thailand	Kuijten, 1992
<i>Rutelarcha quadrimaculata</i> Waterhouse, 1874	Trang	<b>New record</b>

#### ACKNOWLEDGEMENTS

We would like to express our deep gratitude to Zhao Ming-Zhi (South China Agricultural University, Guangzhou, China) for his valuable comments. We also thank Sarunphat Amuntaikul and Phutthipan Wannaput for their help in collecting the specimen of *Rutelarcha quadrimaculata*. Lastly, we would like to thank staffs of the THNHM who enabled T. Hong-suwong to examine specimens in their collection.

## REFERENCES

- Arrow, G.J. 1899. On Sexual Dimorphism in the Rutelid genus *Parastasia* with descriptions of new species. *Transactions of the entomological Society*, 4: 479–499.
- Arrow, G.J. 1917. Coleoptera Lamellicornia part II (Rutelinae, Desmonycinae, and Euchirinae). P.1–387. In: Taylor & Francis (Eds). The Fauna of British India, Including Ceylon and Burma. London.
- Ek-Amnuay, P. 2002. Beetles of Thailand, 2nd Edition. *Siam Insect Zoo and Museum*, Chiang Mai, Thailand.
- Gupta, D., Chandra, K. & Bezděk, A. 2017. Pukupuku arunachalensis sp. nov. (Coleoptera, Scarabaeidae, Rutelinae) from Arunachal Pradesh, India. *European Journal of Taxonomy*, 257: 1–11.
- Hirasawa, H. 1989. Descriptions of Two New Species of the Genus *Fruhstorferia* from Malay Peninsula and Northern Thailand (Coleoptera, Scarabaeidae). *Gekkan-mushi*, 224: 4–10 + pl. 1, 2
- Kirby, W. 1825. A description of such genera and species of insects, alluded to in the "Introduction to Entomology" of Messrs. Kirby and Spence, as appear not to have been before sufficiently noticed or described. *Transactions of the Linnean Society. London*, 14: 563–572.
- Kobayashi, H. 1991. Notes on the Genus *Adoretus* (Coleoptera, Scarabaeidae) from North Thailand. *Elytra*, 19(1): 63–74.
- Kobayashi, H. 2012. Notes on the genus *Spinanomala* from the Oriental region. *Kogane*, 13: 37–48.
- Kobayashi, H. & Fujioka, M. 2013. Notes on the genus *Pseudosinghala* Heller from Southeast Asia. *Kogane*, 14: 85–92
- Krajčák, M. 2007. Checklist of Scarabaeoidea of the World. 2. Rutelinae (Coleoptera: Scarabaeidae: Rutelinae). *Animma.x*, Supplementum 4
- Kuijten, P.J. 1988. *Rutelarcha*, *Lutera* and *Cyphelytra*: notes on taxonomy and Nomenclature, Diagnoses, and keys (Coleoptera: Rutelinae, Rutelini). *Zoologische Mededelingen*, 62: 75–90.
- Kuijten, P.J. 1992. A revision of the genus *Parastasia* in the Indo–Australian region (Coleoptera: Scarabaeidae, Rutelinae). *Zoologische Verhandelingen*, 275: 1–207.
- Lin, P. 1990. New Species of the genus *Mimela* from South and Southwest China, *Entomotaxonomia* 12: 19–26.
- Machatschke, J.W. 1972. Superfamilie Scarabaeoidea, Familie Melolonthidae, Subfamilie Rutelinae. P.1–361. In: Junk W. & Schenkling S. (Eds). *Coleopterorum catalogus*. Berlin.
- MacLeay, W.S. 1819. *Horae entomologicae: or essays on the annulose animals*. S.Bagster. London Vol.1, part 1: 1–160.
- Miyake, Y. 1989. New or little-known scarabaeids Beetles from Southeastern Asia. *Lamellicornia*, 5: 37–45.
- Muramoto, R. 2006. A new genus of the ruteline scarabs and a new species of the genus *Didrepanephorus*. *Kogane*, 7: 55–59.
- Nagai, S. & Hirasawa, H. 1991. Two new species of the genus *Didrepanephorus* from Southeast Asia. *Gekkan-Mushi* 239: 6–12.
- Nguyen, T.T.H. & Wada, K. 2006. A new species of the genus *Mimela* (Coleoptera, Scarabaeidae, Rutelinae) from Vietnam. *Kogane*, 7: 61–64.
- Nonfried, A.F. 1891. Verzeichniss der Rutelidae beschrieben nach der Herausgabe des Münchener Kataloges. *Berliner entomologische Zeitschrift*, 36: 347–358.

- Ohaus, F. 1900. Revision der Parastasiiden. *Deutsche Entomologische Zeitschrift*, 2: 225–266.
- Ohaus, F. 1915. Dritter Nachtrag zur Kenntnis der Philippin. Ruteliden. *Stettiner entomologische Zeitung*, 76: 339–344.
- Ohaus, F. 1918. Phaenomerinae Euchirinae Rutelinae. P.1–241. In: Schenkling S.(Eds.) *Coleopterorum catalogus auspiciis et auxilio*.
- Ohaus, F. 1924. XXII Beitrag zur Kenntnis der Ruteliden. *Stettiner entomologische Zeitung*, 84: 167–178.
- Ohaus, F. 1932a. A collection of Rutelinae from Mt. Kinabalu, British North Borneo. *Journal of the Federated Malay States Museums*, 17: 122–127.
- Ohaus, F. 1932b. Malay Rutelinae in the collection of the Federal Malay States Museums. *Journal of the Federated Malay States Museums*, 17: 130–143.
- Ohaus, F. 1934. Rutelinae I. Genera Insectorum. P. Wytzman, 199A: 1–172.
- Prokofiev, A.M. & Zorn, C. 2016. Review of the *Mimela* species of the Dalat Plateau in southern Vietnam (Coleoptera, Scarabaeidae, Rutelinae). *Beiträge zur Entomologie*, 66(2): 329–346.
- Ratcliffe, B.C., Jameson, M.L. & Zorn, C. 2018. *Ganganomala saltini* Ratcliffe, Jameson, and Zorn, a New Genus and Species of Anomalini (Coleoptera: Scarabaeidae: Rutelinae) from Bangladesh and Nepal, with a Revised Circumscription of the Tribe. *The Coleopterists Bulletin*, 72: 717–736.
- Sabatinelli, G. 1994. New *Mimela* species and Records from Thailand, Vietnam and Nepal (Coleoptera, Scarabaeoidea, Rutelidae). *Coleoptera, Schwannfelder Coleopterologische Mitteilungen*, 3: 57–71.
- Sabatinelli, G. 1997. Nuovo *Adoretosoma*, *Anomala*, *Callistethus*, *Ischnopopillia* e *Mimela* del Himalaya e del Sud-Est Asiatico. *Lambillionea* 97(2): 242–258.
- Streubel, A.V. 1839. Ueber die Stellung der Brachelytren oder Staphylinen im natürlichen System (Ein Beitrag zur Classification der Käfer). *Isis von Oken*, 32: 126–137.
- Wada, K. 1988. Notes on the genus *Parastasia* Westwood, 1841 (Rutelinae, Scarabaeidae, Col.). *Lamellicornia* 4: 1–19.
- Wada, K. 1998a. Three new species of the genus *Callistethus* from Palawan and Borneo. *Elytra*, 26(1): 145–153.
- Wada, K. 1998b. Two new species of the genus *Lutera* from Borneo and Sumatra. *Elytra*, 26(2): 359–367.
- Wada, K. 2015. Systematic study of the genus *Parastasia* Westwood, 1842. Doctoral Thesis. Kyushu University: 567 pp.
- Wada, K. & Muramoto, R. 1999. Three New Species of the Genus *Parastasia* (Coleoptera, Scarabaeidae, Rutelinae) from Southeast Asia. *Elytra*, 27(1): 167–175.
- Waterhouse, C.O. 1874. On two new coleopterous insects belonging to the family Rutelidae. *Entomologist's Monthly Magazine*, 11: 52–54.
- Waterhouse, C.O. 1875. Description of a new genus and species of *Lamellicorn* Coleoptera. *Cistula Entomologica*, 1:367–368.
- Westwood, J.O. 1841. On the Australian genus *Cryptodus*, and upon *Parastasia*, the Asiatic representative of the Rutelidae. *Proceedings of the Entomological Society of London*: 34–35.
- Westwood, J.O. 1875. On the species of Rutelidae inhabiting Eastern Asia and the Islands of the Malayan Archipelago. *Transactions of the entomological Society*, 15: 233–239.
- Young, R.M. 2002. New Country Records for Neotropical and Oriental Rutelinae (Scarabaeidae: Rutelinae). *The Coleopterists Bulletin*, 56(4): 540.