



A survey of the Sumatran Sparassidae (Araneae). 1. Two new *Thelcticipis* species

ALEXANDER A. FOMICHEV^{1,2,3} & MIKHAIL M. OMELKO⁴

¹Altai State University, Lenina Pr., 61, Barnaul, RF-656049, Russia

a.fomichov@mail.ru; <https://orcid.org/0000-0001-9268-622X>

²Tomsk State University, Lenina Pr., 36, Tomsk, RF-634050, Russia

³Western Caspian University, 31 Istiglaliyyat Street, Baku, Azerbaijan

⁴Federal Scientific Center of East Asia Terrestrial Biodiversity, Far Eastern Branch, Russian Academy of Sciences, Vladivostok 690022, Russia

omelkom@gmail.com; <https://orcid.org/0000-0002-1556-6248>

Abstract

Two new species of *Thelcticipis* Karsch, 1884 are described from Sumatra Island, Indonesia, based on males: *T. lizae* **sp. nov.** and *T. ketambe* **sp. nov.** Detailed descriptions, digital photographs and a distributional map are provided. The distribution of Sumatran *Thelcticipis* is briefly discussed.

Key words: Aceh Province, Aranei, biodiversity, huntsman spiders, Sparianthinae, Sunda Islands, Mentawai Islands, taxonomy

Introduction

The family Sparassidae Bertkau, 1972, commonly known as “huntsman spiders”, is a large group comprising 1494 species in 97 genera (WSC 2024). The family is widespread in tropical regions of the world. The Afrotropical realm hosts the largest number of genera (33) (WSC 2024). The Indo-Malayan Realm, to which Sumatra Island belongs, is poorer in regards genus-level diversity. However, this realm is not inferior to the Afrotropical Realm in the number of species. This is thanks to the enormous diversity of some genera, such as *Heteropoda* Latreille, 1804, *Pseudopoda* Jäger, 2000, and *Sinopoda* Jäger, 1999 (Jäger 2008; Grall & Jäger 2020; Zhang *et al.* 2023). In turn, the sparassid fauna of Sumatra Island is speciose. To date, 36 species are known from this island (WSC 2024). They belong to seven genera: *Gnathopalystes* Rainbow, 1899 (1 species), *Heteropoda* (27), *Olios* Walckenaer, 1837 (4), *Pseudopoda* (1), *Rhitymna* Simon, 1897 (1), *Spariolenus* Simon, 1880 (1), and *Thelcticipis* Karsch, 1884 (1). Data on Sumatran Sparassidae are scattered across many taxonomic papers. There are no papers dedicated specifically to the sparassid spiders of Sumatra Island. While studying unsorted material stored in the Institute of Systematics and Ecology of Animals SB RAS (Novosibirsk, Russia), we found many vials with spiders collected in Sumatra Island in 1988 by an unknown collector. Among these spiders there were a large number of Sparassidae specimens. The study of these specimens has revealed two new species of *Thelcticipis*, which are diagnosed and described in this paper.

Material and methods

The specimens examined were photographed with an Olympus DP74 camera attached to an Olympus SZX16 stereomicroscope at the Altai State University (Barnaul, Russia) and a Fujifilm X-T10 camera with Zeiss Touit 50 mm f/2.8 macro camera lens. Photographs of the male palps were taken in an alcohol-filled dish with white cotton at the bottom. Photographs of the general appearance were made after the specimens were slightly dried. Digital

images were montaged using Zerene Stacker (<https://www.zerenestacker.com>) and Helicon Focus software packages (<https://www.photo-soft.ru/helicon-focus>). The distribution map was produced using the online mapping application SimpleMappr (Shorthouse 2010). The coordinates of the collection localities were missing from the original labels and were subsequently restored. Recovered coordinates are placed in square brackets. All measurements are in millimeters. Length of leg segments were measured from the prolateral side, those of palps from the retrolateral side. Palp and leg spination are based on examination of one side of the body. The spination pattern is given in the following format: the sum of all spines is listed for the prolateral, dorsal and retrolateral sides; ventral spines are listed in pairs, from proximal to distal. The terminology and description format follow Sankaran *et al.* (2024), with modifications: viz., the spination pattern is given in the following format: the sum of all spines is listed for the dorsal, prolateral, retrolateral and ventral sides; ventral spines are listed in pairs, from proximal to distal. Leg and palp measurements are shown as: femur, patella, tibia, metatarsus (absent in palp), tarsus (total length). All the examined material is deposited in the Institute of Systematics and Ecology of Animals SB RAS (ISEA; curator G.N. Azarkina) and Federal Scientific Center of East Asia Terrestrial Biodiversity, Vladivostok (IBSS; curator M.M. Omelko).

Abbreviations: ALE—anterior lateral eye, AME—anterior median eye, bpC—basal process of conductor, C—conductor, CS—cymbial scopula, d—dorsal, DE—distal embolic apophysis, dRTA—dorsal retrolateral tibial apophysis, E—embolus, Fe—femur, Mt—metatarsus, p—prolateral, Pa—patella, PE—prolateral embolic apophysis, PLE—posterior lateral eye, PME—posterior median eye, r—retrolateral, RB—retrolateral bulge of cymbium, RE—retrolateral embolic apophysis, RK—retrolateral keel, RTA—retrolateral tibial apophysis, RTS—retrolateral tibial spine, Se—bunch of setae, Sp—spermophor, T—tegulum, TA—tegular apophysis, Ti—tibia, Tr—tarsus, v—ventral, VDL—ventro-distal lobe, vRTA—ventral retrolateral tibial apophysis, I–IV legs I to IV.

Taxonomy

Family Sparassidae Bertkau, 1972

Subfamily Sparianthinae Simon, 1887

Genus *Thelcticipis* Karsch, 1884

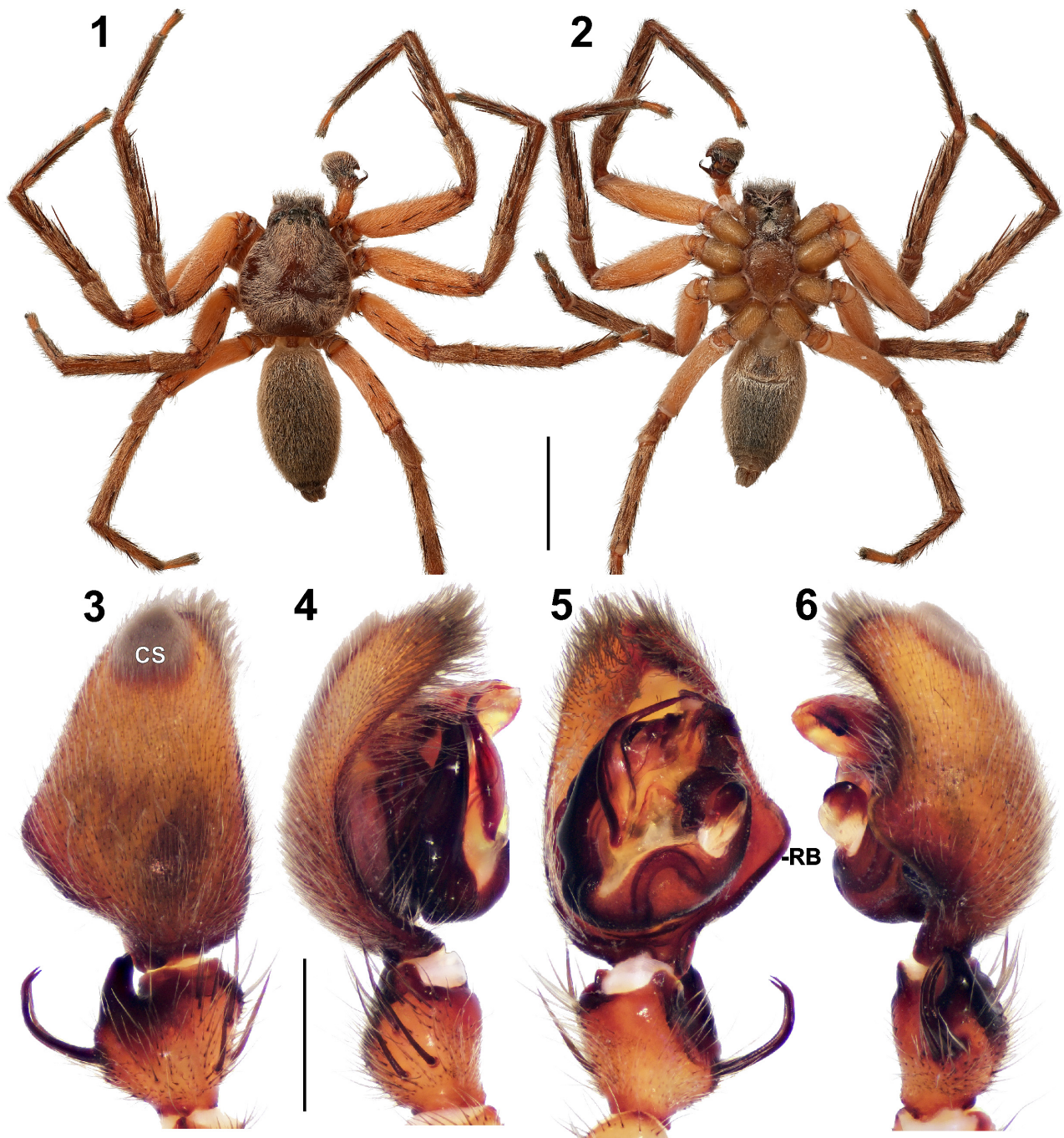
Thelcticipis Karsch, 1884, comprising 53 species, is a medium-sized genus of Sparassidae, distributed from Korea in the Northeast and India in the West to Papua New Guinea (WSC 2024). Recently, this genus of huntsman spiders has attracted the attention of arachnologists. Several species were described from Vietnam, Laos, Philippines and the tropical part of China (Barrion & Litsinger 1995; Jäger & Praxaysombath 2009; Liu *et al.* 2010; Logunov & Jäger 2015; Zhu *et al.* 2020; Cai *et al.* 2021). The Hindustanian and Burmese species were revised by Sankaran *et al.* (2024). Despite this, *Thelcticipis* is still a poorly studied genus. Most of the species inhabiting islands of the Indo-Malayan realm have not been redescribed or reported since their original descriptions. Almost $\frac{3}{4}$ of the described species (39) are known only from a single sex (WSC 2024). *Thelcticipis* species are usually medium- to large-sized nocturnal spiders inhabiting low vegetation, tree bark, and leaf litter in forests (Cai *et al.* 2021; Ng *et al.* 2022). Some representatives of the genus, such as *T. orichalcea* (Simon, 1880), have a striking appearance and impressively aggressive behavior (Ng *et al.* 2022). *Thelcticipis* has a slight medical significance, as its bites are moderately dangerous to humans (Ismail *et al.* 2019).

Thelcticipis lizae sp. nov.

Figs 1–12, 25–26

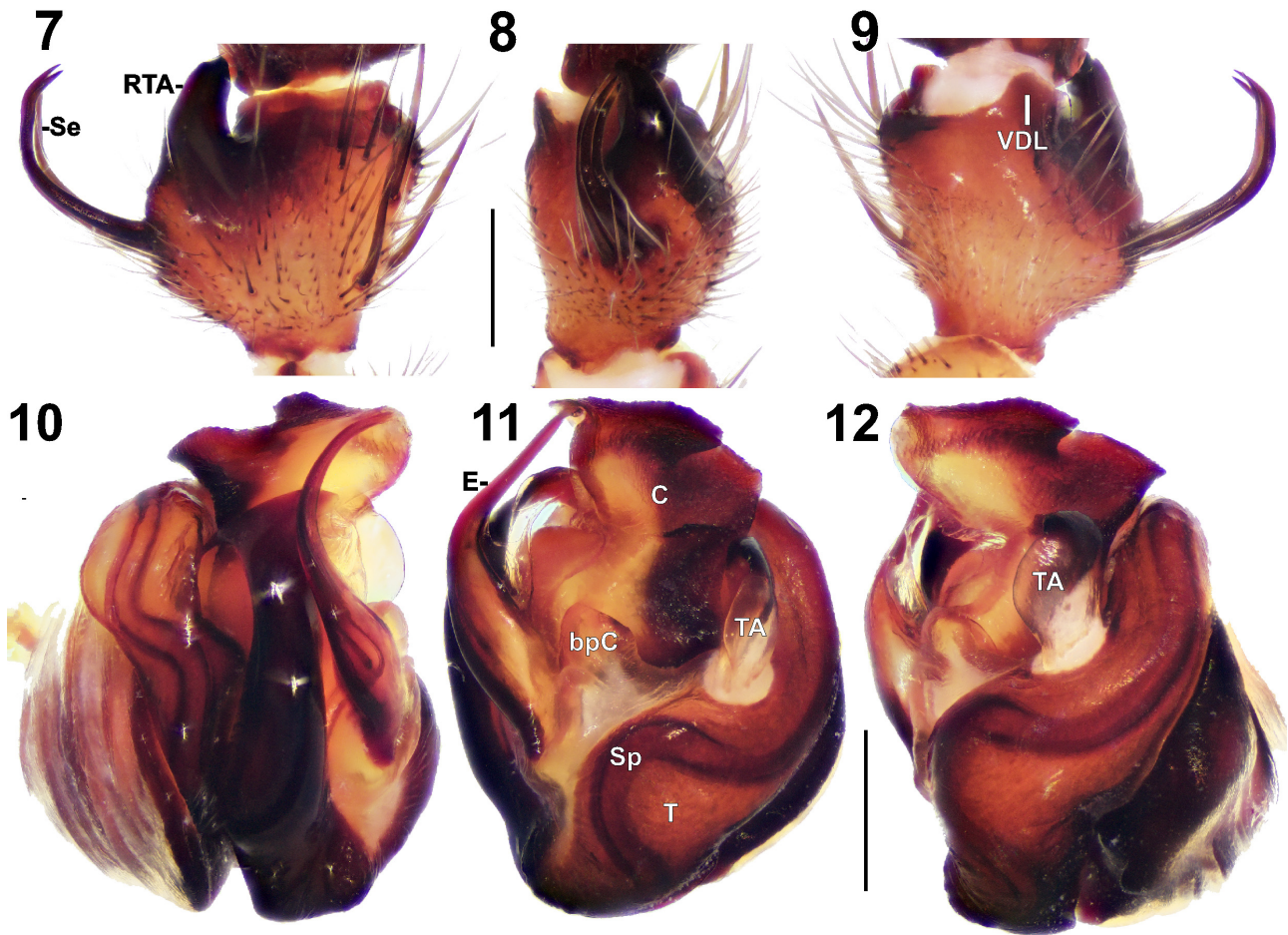
Type material. INDONESIA: *Aceh Province (Sumatra)*: Holotype ♂, Kedah village, [03°59'N, 97°15'E], 1300–1500 m, 1988 (precise date unknown), unknown collector (ISEA, 001.9099).

Etymology. The specific name is a matronym in honor of the senior author's wife, Elizaveta A. Nepaeva (Novoaltaysk, Russia); name in genitive case.



FIGURES 1–6. *Thelctipis lizae* sp. nov., male. 1–2 Habitus (1 dorsal, 2 ventral); 3–6 Palp (3 dorsal, 4 prolateral, 5 ventral, 6 retrolateral). Scale bars: 1–2=5 mm; 3–6=1 mm. Abbreviations: CS—cymbial scopula, RB—retrolateral bulge of cymbium.

Diagnosis. This new species is similar to Indian *T. bicornuta* Pocock, 1901, Taiwanese *T. dahanensis* Zhu & Zhong, 2020 and *T. severa* (L. Koch, 1875), which is widespread from Korea to Laos. The males of all four species have a simple whip-like embolus (E) in combination with a bunch of long parallel setae (Se) on the palpal tibia, which is twice as long as the retrolateral tibial apophysis (RTA). The male of *Thelctipis lizae* sp. nov. differs from those of *T. bicornuta* and *T. severa* by a distally positioned RTA which runs parallel to the longitudinal axis of the tibia [vs. medially or proximally located RTA with its basal part perpendicular to the tibia's length axis; cf. Figs 7–9 and figs 5A–B in Sankaran *et al.* (2024) and figs 2B–D in Zhu *et al.* (2020)]. The male of the new species differs from that of *T. dahanensis* by the non-bifurcated RTA, relatively short E ending at 1-o'clock, and medially located conductor (C) [vs. bifurcated RTA, relatively long E ending at 3-o'clock and C located retrolaterally; cf. Figs 8, 11 and figs 1B, D in Zhu *et al.* (2020)].



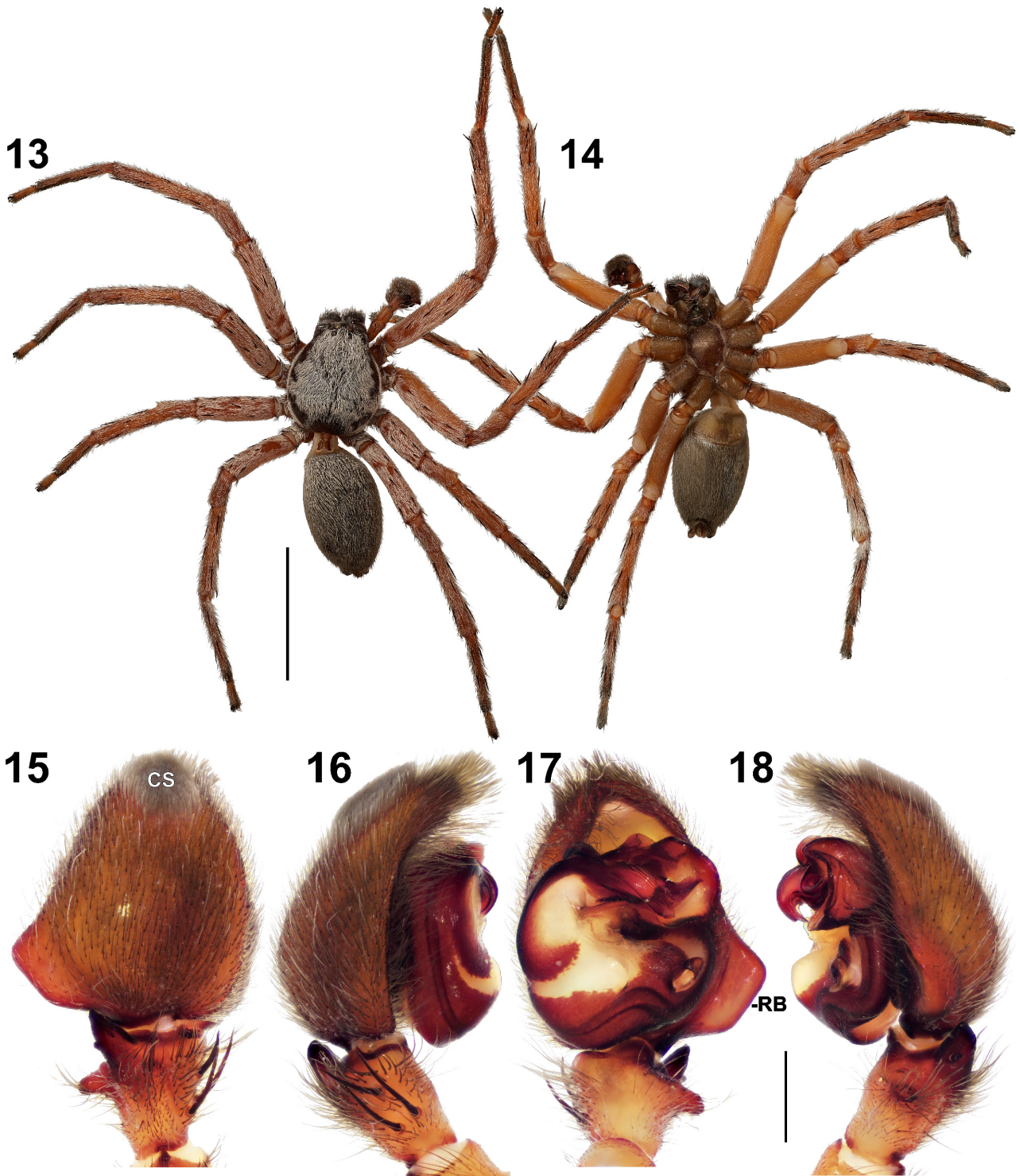
FIGURES 7–12. *Thelcticopis lizae* sp. nov., male. 7–9 Palpal tibia (7 dorsal, 8 retrolateral, 9 ventral); 10–12 Bulb (10 prolateral, 11 ventral, 12 retrolateral). Scale bars: 0.5 mm. Abbreviations: bpC—basal process of conductor, C—conductor, E—embolus, RTA—retrolateral tibial apophysis, Se—bunch of setae, Sp—spermophor, T—tegulum, TA—tegular apophysis, VDL—ventro-distal lobe.

Description. Male: Total length 13.0. Carapace: 5.8 long, 4.8 wide. Opisthosoma: 6.1 long, 3.5 wide. Coloration: Carapace and chelicerae brown. Labium and endites dark brown. Sternum brown. Coxae yellow brown. Palps: Fe–Pa yellowish brown, Ti–Ta brown. Legs: Fe yellowish brown, Pa–Mt brown, Tr yellowish brown. Abdomen brown dorsally, gray ventrally. Spinnerets brown gray. Carapace, chelicerae, palps, legs and opisthosoma with light setae. Eye sizes and interdistances: AME 0.41, ALE 0.26, PME 0.21, PLE 0.36, AME–AME 0.26, AME–ALE 0.24, PME–PME 0.57, PME–PLE 0.51, AME–PME 0.21, ALE–PLE 0.17. Clypeus height at AME 0.36. Clypeus height at ALE 0.14. Leg and palp measurements: Palp: 2.2, 1.1, 1.1, -, 2.4 (6.8). Leg I: 5.7, 2.8, 5.7, 4.7, 1.3 (20.2). Leg II: 5.8, 2.6, 5.2, 4.4, 1.2 (19.2). Leg III: 4.8, 2.2, 3.8, 3.4, 1.2 (15.4). Leg IV: 5.7, 2.1, 4.3, 5.3, 1.5 (18.9). Leg formula: 1243. Leg and palp spination: Palp: Fe d3 p1r1; Pa p1 r1; Ti p3. Leg I: Fe d2 p3 r3; Ti p2 r2 v2-2-2-2-2-2; Mt p2 r2 v2. Leg II: Fe d2 p3 r3; Ti p2 r2 v2-2-2-2-2-2; Mt p3 r3 v2. Leg III: Fe d2 p3 r2; Ti p2 r2 v2-2-2; Mt p3 r3 v2-1-1. Leg IV: Fe d2 p3 r1; Ti p2 r2 v2-2-2; Mt p3 r3 v2-2. Chelicerae with 3 promarginal and 5 retromarginal teeth.

Male palp as shown in Figs 3–12. Tibia slightly longer than wide. Retrolateral tibial apophysis (RTA) consisting of single prong, twice shorter than tibia. Ventro-distal lobe (VDL) short, triangular. Base of RTA with three stiff parallel fused setae forming a single bunch (Se). Cymbium 1.7 times longer than wide, with a pronounced retrolateral bulge (RB) and well developed cymbial scopula (CS) disto-dorsally. Bulb 1.4 times longer than wide. Tegulum (T) large and complex, with spermophor (Sp) forming S-shape in ventral view. Tegular apophysis (TA) arising from T at 3-o'clock position, with mediad apex. Conductor (C) arising medially, rectangular in ventral view, not covering the apex of embolus in ventral view. Basal process of conductor (bpC) almost triangular. Embolus (E) relatively short, originating prolaterally at 8-o'clock, with slightly widened tip, this latter resting into a recess on a prolateral side of C.

Female: unknown.

Distribution. Only known from the type locality (Figs 25–26).

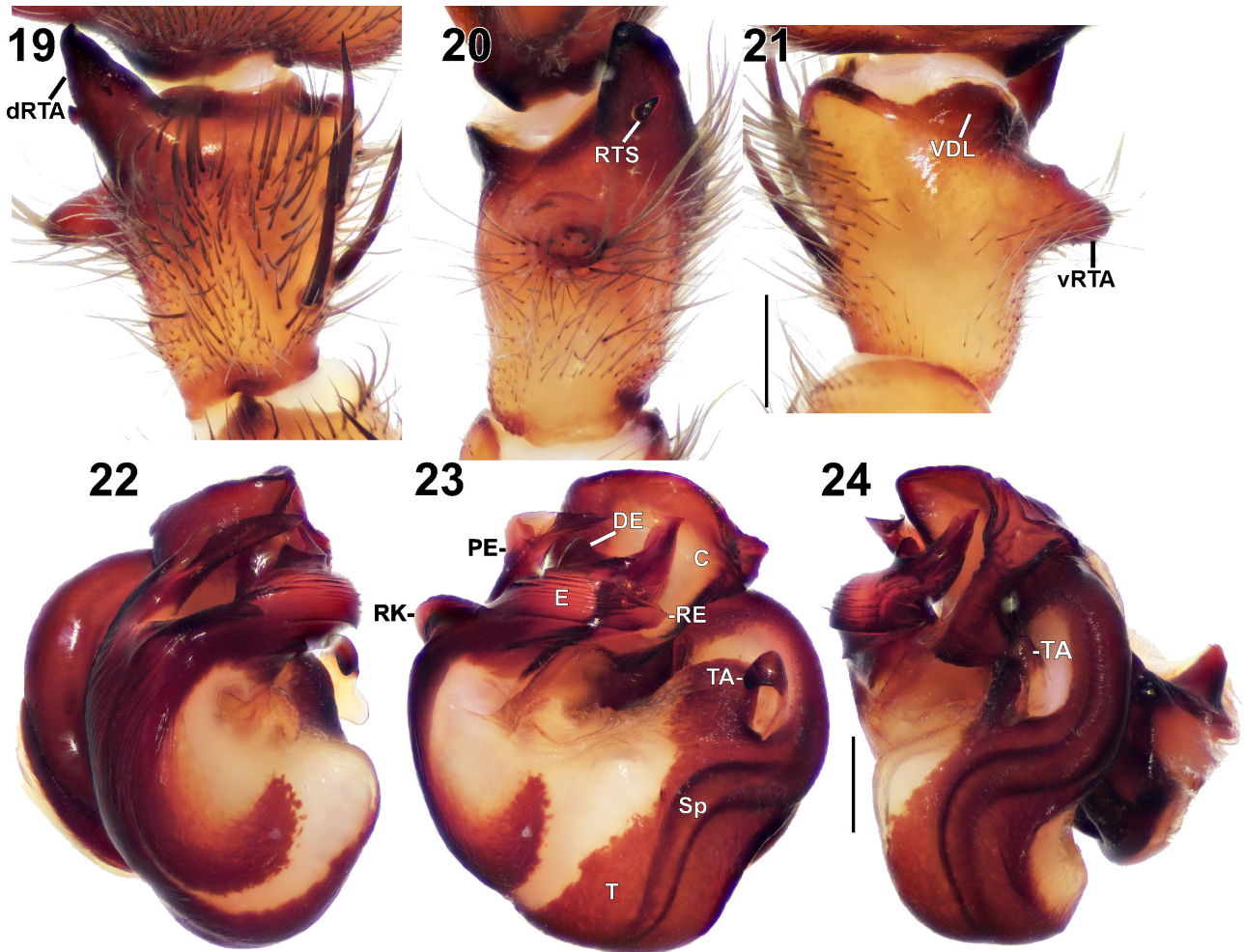


FIGURES 13–18. *Thecticopis ketambe* sp. nov., male. 13–14 Habitus (13 dorsal, 14 ventral); 15–18 Palp (15 dorsal, 16, prolateral, 17 ventral, 18 retrolateral). Scale bars: 13–14=10 mm; 15–18=1 mm. Abbreviations: CS—cymbial scopula, RB—retrolateral bulge of cymbium.

Thelcticopis ketambe sp. nov.

Figs 13–21, 25–26

Type material. INDONESIA: *Aceh Province (Sumatra)*: Holotype ♂, Ketambe village [03°41'N, 97°39'E], 400–500 m, 1988 (precise date unknown), unknown collector (ISEA, 001.9100). Paratype: 1♂ (IBSS), same data as holotype.



FIGURES 19–24. *Thelcticopis ketambe* sp. nov., male. 19–21 Palpal tibia (19 dorsal, 20 retrolateral, 21 ventral); 22–24 Bulb (22 prolateral, 23 ventral, 24 retrolateral). Scale bars: 0.5 mm. Abbreviations: C—conductor, DE—distal embolic apophysis, dRTA—dorsal retrolateral tibial apophysis, E—embolus, PE—prolateral embolic apophysis, RE—retrolateral embolic apophysis, RK—retrolateral keel, RTS—retrolateral tibial spine, Sp—spermophor, T—tegulum, TA—tegular apophysis, VDL—ventro-distal lobe.

Etymology. The specific epithet is derived from Ketambe Village, near which the type locality of the new species is situated; name in apposition.

Diagnosis. The male of new species differs from those of all congeners except the Chinese species *T. chongzu* Lin & Li, 2024 in Lin *et al.* (2024) and *T. pinmi* Cai & Zhong, 2021 in Cai *et al.* (2021) in having a complex embolus (E) possessing several apophyses. The male of *T. ketambe* sp. nov. can be distinguished from both species by an absence of median retrolateral tibial apophysis, instead of which is retrolateral tibial spine (RTS) present, blunt ventral (vRTA) and wide dorsal (dRTA) retrolateral tibial apophyses [vs. median retrolateral tibial apophysis present, vRTA pointed, dRTA narrow, whip-like; cf. Figs 19–21 and 51B in Lin *et al.* (2024) and fig. 3B in Cai *et al.* (2021)].

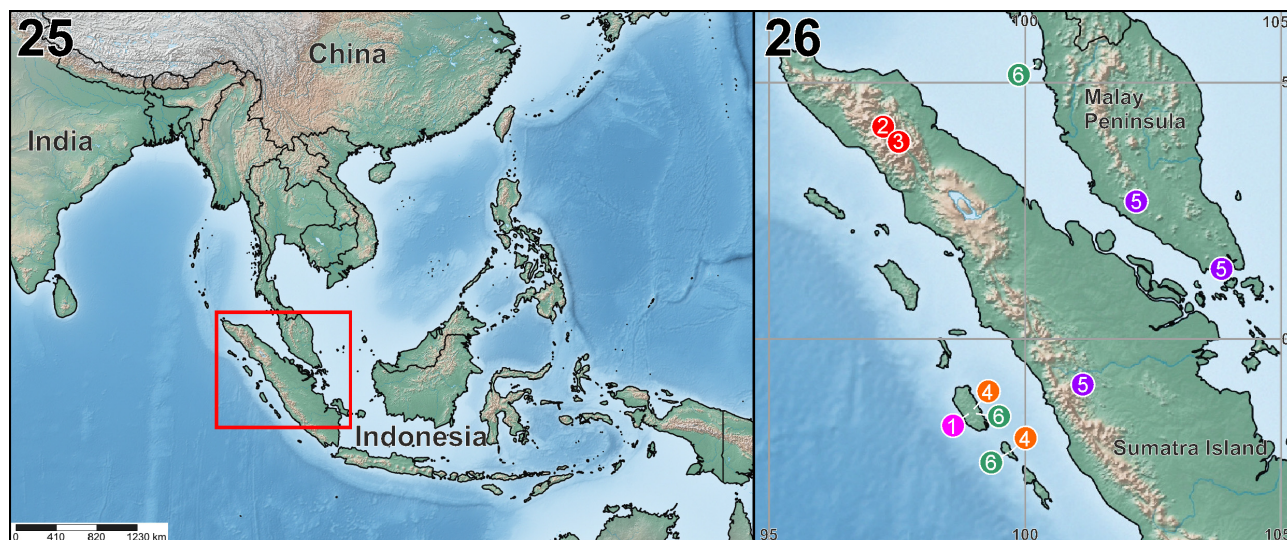
Description. Male: Total length 17.0. Carapace: 8.5 long, 6.8 wide. Opisthosoma: 9.1 long, 5.7 wide. Coloration: Carapace and chelicerae brown. Labium and endites dark brown. Sternum brown. Coxae brown. Palps:

Fe–Ti yellowish brown, Ta brown. Legs yellowish brown. Opisthosoma and spinnerets gray. Carapace, chelicerae, palps, legs and abdomen with light setae. Eye sizes and interdistances: AME 0.54, ALE 0.36, PME 0.27, PLE 0.31, AME–AME 0.47, AME–ALE 0.41, PME–PME 0.94, PME–PLE 0.86, AME–PME 0.24, ALE–PLE 0.36. Clypeus height at AME 0.43. Clypeus height at ALE 0.29. Leg and palp measurements: Palp: 3.0, 1.5, 1.6, -, 3.3 (9.4). Leg I: 8.3, 3.9, 8.1, 6.8, 1.8 (28.9). Leg II: 8.1, 3.8, 7.2, 6.0, 1.7 (26.8). Leg III: 6.3, 3.0, 5.0, 4.5, 1.5 (20.3). Leg IV: 8.1, 2.9, 6.9, 7.3, 2.0 (27.2). Leg formula: 1423. Leg and palp spination: Palp: Fe d3 p1 r1; Pa r1; Ti p2. Leg I: Fe d2 p3 r3; Ti d1 p3 r2 v2-2-2-2-2; Mt p2 r2 v2. Leg II: Fe d2 p3 r3; Ti d1 p2 r2 v2-2-2-2-1; Mt p2 r2 v2. Leg III: Fe d2 p3 r2; Ti d1 p2 r2 v2-2-2; Mt p3 r3 v2-1. Leg IV: Fe d2 p3 r1; Ti d1 p2 r2 v2-2-2; Mt p3 r3 v2-1. Chelicerae with 3 promarginal and 6 retromarginal teeth.

Male palp as shown in Figs 15–24. Tibia twice as long as wide. Dorsal retrolateral tibial apophysis (dRTA) with triangular tip. Ventral retrolateral tibial apophysis (vRTA) cone-shaped. Retrolateral tibial spine (RTS) short and stout. Ventro-distal lobe (VDL) short, semicircular. Cymbium 1.2 times longer than wide, with rectangular retrolateral bulge (RB) and well developed cymbial scopula (CS) disto-dorsally. Bulb 1.2 times longer than wide. Tegulum (T) heart-shaped. Spermophor (Sp) S-shaped in retrolateral view. Tegular apophysis (TA) basally membranous, arising from T in 3-o'clock position, with mediad apex. Conductor (C) arising distally, with triangular retrolateral margin. Embolus (E) arising in 9-o'clock position, complex, with retrolateral keel (RK) and three apophyses: beak-shaped prolateral apophysis (PE), rounded retrolateral one (RE) and isosceles triangle-shaped distal one (DE). Tip of E beak-shaped.

Female: unknown.

Distribution. Only known from the type locality (Figs 25–26).



FIGURES 25–26. Distribution records of *Thelcticopis* spp. from Sumatra, Mentawai Islands and adjacent Malay Peninsula: *T. karnyi* (1), *T. lizae* **sp. nov.** (2), *T. ketambe* **sp. nov.** (3), *T. klossi* (4), *T. orichalcea* (5), *T. modesta* (6).

Discussion

According to the WSC (2024), three species of spiders from *Thelcticopis* are known from the entire island of Sumatra, namely *T. karnyi* Reimoser, 1929, *T. klossi* Reimoser, 1929, and *T. orichalcea*. An analysis of the literature data revealed that only the latter species is known from Sumatra main island. It is also known from Thailand, the Malay Peninsula, and Borneo (WSC 2024). The first two species, however, were described (Reimoser, 1929) and are still only known from the islands of Siberut (*T. karnyi*, *T. klossi*) and Sipora (*T. klossi*), which geographically belong to the Mentawai Islands, rather than the Sunda Islands to which Sumatra belongs. It is important to note that *Thelcticopis modesta* Thorell, 1890, presently listed in the WSC (2024) only for Malaysia, is also known from the Mentawai Islands, Indonesia (Reimoser 1929).

Thelcticopis karnyi and *T. klossi* are only known from females. Both species were described in sufficient detail (Reimoser 1929) to allow comparison of their somatic characters with those of the two new species described in the present paper. *Thelcticopis karnyi* and *T. klossi* have a different spination pattern and coloration in comparison with

T. lizae **sp. nov.** and *T. ketambe* **sp. nov.** (Table 1). Thus, upon future discovery of the missing sexes, *T. lizae* **sp. nov.** and *T. ketambe* **sp. nov.** are not expected to be junior synonyms of *T. karnyi* and *T. klossi* from the Mentawai Islands. In addition, the new species were discovered at a significant distance (approximately 650 km) to the north of Siberut and Sipora, and most of *Theლcticopis* species have small ranges and are known from only one or two localities. It is also important to note that both new species were found in mid-altitude and high-altitude forests (500 and 1400 meters, respectively), whereas the vegetation of the Mentawai Islands, from which *Theლcticopis karnyi* and *T. klossi* were described, is represented only by lowland forests.

TABLE 1. Somatic characters of *Theლcticopis* species known from the entire island of Sumatra and the Mentawai Islands.

Character	<i>T. karnyi</i>	<i>T. ketambe</i> sp. nov.	<i>T. klossi</i>	<i>T. lizae</i> sp. nov.	<i>T. modesta</i>	<i>T. orichalcea</i>
Ventral spines in tibia I	Five pairs and one unpaired	Six pairs	Five pairs	Six pairs	Five pairs and one unpaired	Four pairs and one unpaired
Carapace	Black brown	Brown	Dark brown	Brown	Red brown	Golden
Sternum	Light red brown	Brown	Dark red brown	Brown	Red brown	Black
Dorsal side of the abdomen	With pattern	Without pattern	With pattern	Without pattern	With pattern	Without pattern
Ventral side of the abdomen	Gray brown with light yellow stripes laterally	Gray	Gray brown with light yellow stripes laterally	Gray	Black	Black

Acknowledgements

We are grateful to Sergei V. Reshetnikov (Novosibirsk, Russia) for his help with taking digital photos. We thank the subject editor and two anonymous reviewers for their valuable comments on the manuscript. The work of Mikhail M. Omelko was carried out within the state assignment of Ministry of Science and Higher Education of the Russian Federation (theme No. 124012400285-7) using equipment of Laboratory of Ecology and Evolutionary Biology of Aquatic Organisms (Far Eastern Federal University).

References

- Barrion, A.T. & Litsinger, J.A. (1995) *Riceland spiders of South and Southeast Asia*. CAB International, Wallingford, 700 pp., 16 pls.
- Bertkau, P. (1872) Über die Respirationsorgane der Araneen. *Archiv für Naturgeschichte*, 38, 208–233.
- Cai, C.H., Lin, Y.J. & Zhong, Y. (2021) Description of a new species of *Theლcticopis* Karsch (Araneae, Sparassidae) from Guangxi Province, China. *Biodiversity Data Journal*, 9 (e67437), 1–8. <https://doi.org/10.3897/BDJ.9.e67437>
- Grall, E. & Jäger, P. (2020) Forty-seven new species of *Sinopoda* from Asia with a considerable extension of the distribution range to the south and description of a new species group (Sparassidae: Heteropodinae). *Zootaxa*, 4797 (1), 1–101. <https://doi.org/10.11646/zootaxa.4797.1.1>
- Ismail, K., Court, D.J. & Anthonyamy, C. (2019) A Huntsman’s Bite: Envenoming from the Malaysian ‘Black & Gold’, *Theლcticopis* sp. Spider (Arachnida: Araneae: Sparassidae: Sparianthinae). *Medicine & Health (Universiti Kebangsaan Malaysia)*, 14, 183–190. <https://doi.org/10.17576/MH.2019.1401.15>
- Karsch, F. (1884) Arachnoidea. In: Greeff, R. (Ed.), Ueber die Fauna der Guinea-Inseln S. Thomé und Rolas. *Sitzungsberichte der Gesellschaft zur Beförderung der Gesamten Naturwissenschaften zu Marburg*, 2, pp. 60–68 + 79.
- Liu, J., Li, S.Q. & Jäger, P. (2010) Huntsman spiders (Araneae: Sparassidae) from Xishuangbanna rainforest, China. *Zootaxa*, 2508 (1), 56–64. <https://doi.org/10.11646/zootaxa.2508.1.4>

- Jäger, P. (1999) *Sinopoda*, a new genus of Heteropodinae (Araneae, Sparassidae) from Asia. *Journal of Arachnology*, 27, 19–24.
- Jäger, P. (2000) Two new heteropodine genera from southern continental Asia (Araneae: Sparassidae). *Acta Arachnologica*, 49, 61–71.
<https://doi.org/10.2476/asjaa.49.61>
- Jäger, P. (2008) Revision of the huntsman spider genus *Heteropoda* Latreille 1804: species with exceptional male palpal conformations from Southeast Asia and Australia (Arachnida, Araneae: Sparassidae: Heteropodinae). *Senckenbergiana Biologica*, 88, 239–310.
- Jäger, P. & Praxaysombath, B. (2009) Spiders from Laos: new species and new records (Arachnida: Araneae). *Acta Arachnologica*, 58, 27–51.
<https://doi.org/10.2476/asjaa.58.27>
- Koch, L. (1875) *Die Arachniden Australiens, nach der Natur beschrieben und abgebildet [Erster Theil. Lieferung 12–16]*. Bauer & Raspe, Nürnberg, pp. 577–740, pls. 44–65.
<https://doi.org/10.5962/bhl.title.121660>
- Latreille, P.A. (1804) Tableau methodique des Insectes. *Nouveau Dictionnaire d'Histoire Naturelle, Paris*, 24, 129–295.
- Lin, Y.J., Li, S.Q., Mo, H.L. & Wang, X.H. (2024) Thirty-eight spider species (Arachnida: Araneae) from China, Indonesia, Japan and Vietnam. *Zoological Systematics*, 49, 4–98.
<https://doi.org/10.11865/zs.2024101>
- Logunov, D.V. & Jäger, P. (2015) Spiders from Vietnam (Arachnida: Aranei): new species and records. *Russian Entomological Journal*, 24, 343–363.
<https://doi.org/10.15298/rusentj.24.4.09>
- Ng, P.Y.C., Court, D.J., Leguin, E.-A. & Rollard, C. (2022) Notes on the black-and-gold huntsman spider, *Thelcticopis orichalcea* (Simon, 1880), a charismatic Southeast-Asian species (Araneae: Sparassidae: Sparianthinae). *Nature in Singapore*, 15 (e2022116), 1–8.
<https://doi.org/10.26107/NIS-2022-0116>
- Pocock, R.I. (1901) Descriptions of some new species of spiders from British India. *Journal of the Bombay Natural History Society*, 13, 478–498.
- Rainbow, W.J. (1899) Contribution to a knowledge of the araneidan fauna of Santa Cruz. *Proceedings of the Linnean Society of New South Wales*, 24, 304–321.
<https://doi.org/10.5962/bhl.part.7667>
- Reimoser, E. (1929) Spolia Mentawaiensis. Araneae. *Bulletin of the Raffles Museum Singapore*, 2, 125–133.
- Sankaran, P.M., Sherwood, D. & Jäger, P. (2024) On the identity of species of the huntsman spider genus *Thelcticopis* Karsch, 1884 (Araneae: Sparassidae: Sparianthinae) from India, Myanmar, Pakistan, and Sri Lanka. *Zootaxa*, 5463 (3), 301–338.
<https://doi.org/10.11646/zootaxa.5463.3.1>
- Shorthouse, D.P. (2010) SimpleMappr, an online tool to produce publication-quality point maps. Available from: <http://www.simplemappr.net> (accessed 25 August 2024)
- Simon, E. (1880) Révision de la famille des Sparassidae (Arachnides). *Actes de la Société Linnéenne de Bordeaux*, 34, 223–351.
- Simon, E. (1887) Espèces et genres nouveaux de la famille des Sparassidae. *Bulletin de la Société Zoologique de France*, 12, 466–474.
- Simon, E. (1897) Etudes arachnologiques. 27e mémoire (1). XLII. Descriptions d'espèces nouvelles de l'ordre des Araneae. *Annales de la Société Entomologique de France*, 65 (3), 465–510, pls. 12–13. [1896]
- Thorell, T. (1890) Arachnidi di Pinang raccolti nel 1889 dai Signori L. Loria e L. Fea. *Annali del Museo Civico di Storia Naturale di Genova*, 30, 269–383.
- Walckenaer, C.A. (1837) Histoire naturelle des insectes. Aptères. *Tome premier*. Roret, Paris, 682 pp., pls. 1–15.
<https://doi.org/10.5962/bhl.title.47512>
- WSC (2024) *World Spider Catalog. Version 25.5*. Natural History Museum, Bern. Available from: <http://wsc.nmbe.ch> (accessed 25 August 2024)
<https://doi.org/10.24436/2>
- Zhang, R., Zhang, B.S. & Zhang, F. (2023) Two new huntsman spiders from Xiaolong Mountains in Gansu Province, China (Araneae, Sparassidae). *Zootaxa*, 5244 (2), 182–190.
<https://doi.org/10.11646/zootaxa.5244.2.6>
- Zhu, Y., Lin, Y.J. & Zhong, Y. (2020) Two new and one newly recorded species of *Thelcticopis* Karsch, 1884 (Araneae, Sparassidae) from China. *ZooKeys*, 940, 105–115.
<https://doi.org/10.3897/zookeys.940.50764>