

Far Eastern Entomologist

Дальневосточный энтомолог

Journal published by Far East Branch
of the Russian Entomological Society
and Laboratory of Entomology, Federal
Scientific Center of the East Asia
Terrestrial Biodiversity, Vladivostok

Number 376: 1-14

ISSN 1026-051X

February 2019

<https://doi.org/10.25221/fee.376.1>

<http://urn:lsid:zoobank.org:pub:C5B965DC-250B-4E49-8993-0418D511DB64>

A NEW GENUS OF SPIDER WASPS (HYMENOPTERA, POMPILIDAE) FROM CHINA

V. M. Loktionov^{1,*}, A. S. Lelej¹, J.-X. Liu²

1) Federal Scientific Center of the East Asia Terrestrial Biodiversity, Far Eastern Branch of Russian Academy of Sciences, Vladivostok, 690022, Russia. *Corresponding author, E-mail: pompilidaefer@mail.ru

2) Department of Entomology, College of Agriculture, South China Agricultural University, Guangzhou 510640, China. E-mail: liujingxian@scau.edu.cn

Summary. A new genus *Eopriocnemis* Loktionov et Lelej, **gen. n.** (type species *E. albiflagellata* Loktionov et Lelej, **sp. n.**) is described and illustrated from China (Hainan). The new genus belongs to the tribe Priocnemini of the subfamily Pepsinae and is closely related to *Priocnemis* Schiødte, *Ctenopriocnemis* Ishikawa and *Clistoderes* Banks, but easily distinguishes from them by the venation of the fore wing and shape of axilla. Key to the genera of the tribe Priocnemini is given.

Key words: Pepsinae, Priocnemini, taxonomy, new taxa, key, Oriental Region, China, Hainan.

В. М. Локтионов, А. С. Лелей, Ц.-С. Лю. Новый род дорожных ос (Hymenoptera, Pompilidae) из Китая // Дальневосточный энтомолог. 2019. N 376. С. 1-14.

Резюме. Описывается новый род дорожных ос *Eopriocnemis* Loktionov et Lelej, **gen. n.** (типовой вид *E. albiflagellata* Loktionov et Lelej, **sp. n.**) из Китая (Хайнань). Новый род относится к трибе Priocnemini подсемейства Pepsinae и

сходен с родами *Priocnemis* Schiødte, *Ctenopriocnemis* Ishikawa и *Clistoderes* Banks, но легко может быть отличен от них по жилкованию передних крыльев и форме аксилл. Даются определительные таблицы родов трибы Priocnemini.

INTRODUCTION

The family Pompilidae (spider wasps) is one of the largest families among the aculeate wasps in Hymenoptera distributed worldwide, but mostly in the tropical regions (Pitts *et al.*, 2006). The family numbers around 5000 recent species in 254 genera and five subfamilies in the World, around 1000 species in the Palaearctic (Aguilar *et al.*, 2013; Waichert *et al.*, 2015; Loktionov & Lelej, 2017).

The fauna of the family Pompilidae of China is studied poorly. There are some faunistic, taxonomic and systematic papers dealing with different groups of the family from some areas of China (Haupt, 1935, 1938; Wu, 1941; Ishikawa, 1965; Tsuneki, 1989, Ma & Li, 2010a, b, 2013; Li *et al.*, 2014, 2015; Ji *et al.*, 2014, 2015a, b; Lu *et al.*, 2016; Jiang *et al.*, 2016; Loktionov *et al.*, 2017, 2018, and others). Hua Li-zhong (2006) in his "List of Chinese Insects" was the first who compiled data on spider wasps of China and numbered 165 nominal species, 48 nominal genera and three subfamilies. The analysis of all available references showed that the fauna of spider wasps of China numbers at least 219 valid species from 42 valid genera. We suggest that estimated number of Pompilids taxa in China is more than 300 species and no less than 55 genera.

In 2016 during the study of hymenopteran collection in the South China Agricultural University, Guangzhou, we examined more than 2300 specimens of Chinese spider wasps in 39 genera. Of them only two specimens of spider wasps belong to an undescribed genus and species. These specimens were collected in 2006 and 2007 years in the Oriental part of China (Hainan) by yellow pan traps. In current paper *Eopriocnemis albiflagellata* Loktionov et Lelej, **gen. et sp. n.** based on both sexes is described and key to genera of the tribe Priocnemini is given.

MATERIAL AND METHODS

The terminology for morphology is mostly based on the glossary provided by the Hymenoptera Anatomy Consortium (2013). The terminology of wing venation and cells follows Day (1988). The following abbreviations are used for morphological terms: F1, F2, F3, etc., the first, second, third flagellomeres, etc.; UID, the upper interocular distance; MID, the middle interocular distance; LID, the lower interocular distance; OOD, the distance between posterior ocellus and compound eye which is measured from above; POD, the postocellar distance which is measured from above; S1, S2, S3, etc., the first, second, third metasomal sterna, etc.; SMC2, the second submarginal cell of fore wing; SMC3, the third submarginal cell of fore wing; T1, T2, T3, etc., the first, second, third metasomal terga etc.; UID, the upper interocular distance.

To study male genitalia and hypopygium, they were extracted after being previously softened. The muscles were removed in a sodium hydroxide solution (NaOH 10%). The structures were later placed in water to neutralize the NaOH and stored in micro vials filled with glycerin, and studied under a stereomicroscope in a depression slide. Photographs of genitalia, hypopygium as well as wings and claws, were taken with the stereomicroscope SteREO Discovery.V12 and stacked using Combine ZM software. Photographs of imago were taken with the stereomicroscope Olympus SZX16 and digital camera Olympus DP74, and stacked using Helicon Focus software. The final illustrations were post-processed for contrast and brightness using Adobe® Photoshop® software.

The type specimens are deposited in SCAU – Hymenopteran Collection of South China Agricultural University, Guangzhou, China (curator J.-X. Liu).

TAXONOMY

Tribe Priocnemini Banks, 1934

Priocnemini Banks, 1934: 31 (based on *Priocnemis* Schiødte, 1837, stem *Priocnem-*): Engel & Grimaldi, 2006: 360; Lelej & Loktionov, 2012: 412; Loktionov & Lelej, 2014: 85; 2015: 17.

DIAGNOSIS. The tribe Priocnemini is easily separated from other tribes of the subfamily Pepsinae by having the metatibia dorsally with scale-like teeth, each one overhanging short spine and the tarsomere 5 ventrally either with single median row of spines, or spines arising irregularly at median and lateral portions, or without any spines, never with two distinct lateral rows of spines; legs of males not modified; the mesopleuron without any tubercles.

GENERA INCLUDED. *Caliadurgus* Pate, 1946; *Claveliocnemis* Wolf, 1968; *Clistoderes* Banks, 1934; *Ctenopriocnemis* Ishikawa, 1962; *Eopompilus* Gussakovskij, 1932; *Eopriocnemis* Loktionov et Lelej, **gen. n.**; *Malloscelis* Haupt, 1935; *Platydialepis* Haupt, 1941; *Priocnemis* Schiødte, 1837; *Priocnessus* Banks, 1925.

DISTRIBUTION. Worldwide.

Genus *Eopriocnemis* Loktionov et Lelej, **gen. n.**

<http://urn:lsid:zoobank.org:act:2CA89ABD-8D81-4ECA-85D1-06516D8F6FFA>

Type species *Eopriocnemis albiflagellata* Loktionov et Lelej, **sp. n.**

DIAGNOSIS. The new genus is closely related to *Priocnemis* Schiødte, 1837 by having axilla broad and not separated medially in both sexes (Figs 8, 15), but easily differs by the following characters: abscissae *Rs3* and *Rs4* of fore wing forming distinct obtuse angle in both sexes (Figs 17, 19) (*vs* not forming angle in *Priocnemis*); pterostigma distinctly longer than SMC2 in both sexes, especially in male (Figs 17, 19) (*vs* distinctly shorter in *Priocnemis*); T1 with long and narrow petiole basally in both sexes (Figs 7, 15) (*vs* usually without petiole in *Priocnemis*, rarely with short petiole (Shimizu, 1994: fig. 336)); head and pronotum strongly polished with scattered very fine punctures in both sexes (Figs 5, 13) (*vs* matt or barely polished with dense punctures in *Priocnemis*); F6–F9 entirely ivory-white in female (Figs 1, 2) (*vs* black in *Priocnemis*); S2 with very fine transverse groove in female (*vs* with strong groove in *Priocnemis*).



Figs 1–8. *Eopriocnemis albiflagellata* Loktionov et Lelej, **sp. n.**, holotype, ♀. 1 – habitus, dorsal view; 2 – habitus, lateral view; 3 – head, frontal view; 4 – head and pronotum, lateral view; 5 – head, pronotum and mesoscutum, dorsal view; 6 – mesosoma, lateral view; 7 – mesoscutellum, metanotum, metapostnotum, propodeum and T1, dorsal view; 8 – axilla, mesoscutellum, metanotum, metapostnotum and propodeum anteriorly, dorsal view. Scale bar: 1, 2 = 1.0 mm; 3–7 = 0.5 mm; 8 = 0.2 mm.

The new genus shows some similarity to *Clistoderes* Banks, 1934 and *Ctenopriocnemis* Ishikawa, 1962 by having abscissae *Rs3* and *Rs4* of fore wing forming distinct obtuse angle in both sexes (Figs 17, 19) and T1 with basal petiole in female (Fig. 7), but differs from both of them by having axilla broad and deep, not separated medially, its posterior margin straight in both sexes (Figs 8, 15) (*vs* axilla narrow and shallow, wedge-like and broadly separated medially in *Clistoderes* and *Ctenopriocnemis*).

DESCRIPTION. FEMALE. Body slender, smooth and mostly without setae. Ocelli small and raised; ocellar triangle acute-angled (Fig. 5); POD/OOD=0.25. Clypeus long, noticeable narrowing toward apex (Fig. 3). Mandible with subapical blunt and small tooth. Antenna slender, F1 length 5.0× its width and 0.8× UID. Pronotum without anterior declivity, i. e. dorsum merging with collar (Figs 4, 6) and barely convex. Axillae broad and deep not separated medially, with straight posterior margin (Fig. 8). Metapostnotum 1.2× longer than metanotum medially (Figs 7, 8). Propodeum evenly convex with posterior declivity not differentiated from dorsum (Fig. 6). Fore wing (Fig. 17) with pterostigma 1.5× longer than SMC2 on vein *M*; abscissae *Rs3* and *Rs4* forming distinct obtuse angle. Metatibia dorsally with well developed row of scale-like teeth (Figs 27, 28). Orbicular pecten with 8–9 weak, almost straight setae, longest one 0.7× claw length. Arolium normal, apically not extending beyond apex of claw. Claws symmetrical with preapical inner tooth noticeably larger than apical one (Fig. 25). S2 with weak transverse furrow. T1 basally with long and narrow petiole (Fig. 7). Frons, occiput, vertex, gena and pronotum strongly polished with scattered fine punctures (Figs 3–5).

MALE. Similar to female. Body slender, smooth and mostly without setae. Vertex strongly raised between eye tops (Fig. 11). Ocelli small, entirely raised; ocellar triangle barely acute-angled (Fig. 13); POD/OOD=0.25. Antenna slender (Fig. 10); F3–F10 barely convex ventrally and concave dorsally; F1 length 3.2× its width and 0.45× UID. Pronotum without distinct anterior declivity, i. e. dorsum merging with collar (Fig. 14) and barely convex. Metapostnotum 1.3× metanotum length (Fig. 15). Propodeum evenly convex with posterior declivity not differentiated from dorsum (Fig. 14). Fore wing (Fig. 19) with pterostigma 1.6× SMC2 length on vein *M*; abscissae *Rs3* and *Rs4* forming distinct obtuse angle. Metatibia dorsally with row of small teeth each of them ending with short spine (Fig. 29). Orbicular pecten with 5–6 weak, straight setae, longest one 0.7× claw length. Arolium normal, apically not extending beyond apex of claw. Claws symmetrical with preapical inner tooth noticeably larger than apical one (Fig. 26). T1 basally with long and narrow petiole (Fig. 15). Hypopygium flattened (Figs 23, 24). Head and pronotum strongly polished with scattered fine punctures (Figs 11–13).

ETYMOLOGY. The new name is a combination of "Eos" (Greek Goddess of the daybreak) with reference to Oriental distribution of new genus and the generic name *Priocnemis*.

SPECIES INCLUDED. Type species only.

DISTRIBUTION. Oriental region (China: Hainan).

REMARKS. The new genus is obviously distributed widely and occurs in neighbouring countries such as Vietnam, Lao and Thailand, like the genera *Nippodipogon* and *Eopompilus* known from the south of China (Yunnan, Guangdong and Hainan) have been found in Laos (Loktionov & Lelej, 2018; Wahis *et al.*, 2018).

***Eopriocnemis albiflagellata* Loktionov et Lelej, sp. n.**

<http://urn:lsid:zoobank.org:act:238E3492-98A1-4427-A9B0-099F093C78EB>

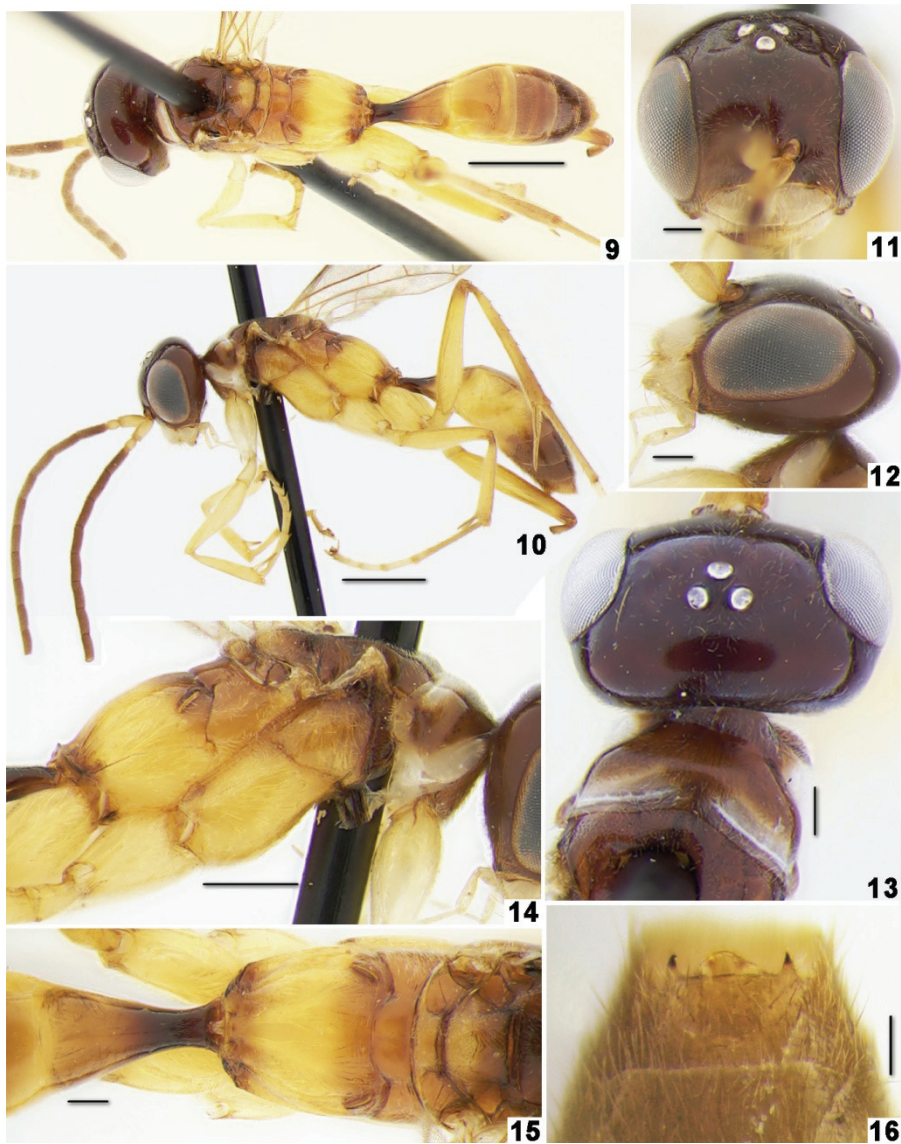
Figs 1–29

TYPE MATERIAL. Holotype – ♀, CHINA: Hainan, Mt. Bawangling, 7–11.VII 2006, Liu Jingxian, No. 2016001095 (SCAU). Paratype – ♂, CHINA: Hainan, Mt. Jianfengling, 5–7.VI 2007, Weng Liqiong, No. 2016000254 (SCAU).

DESCRIPTION. FEMALE. Body length 6.6 mm; fore wing length 6.4 mm. Head black; clypeus ivory with longitudinal baso-medial light brown stripe ending small spot medially (Fig. 3); mandible ivory in basal half, light brown preapically and dark brown apically; antenna black with F6–F9 entirely ivory and apical flagellomere brown (Figs 1, 2); labial and maxillary palps light brown. Mesosoma black and yellow-red (Figs 1, 2, 6); pronotum black with transverse ivory stripes antero- and posterolaterally; mesoscutum black; tegula yellow-red; mesoscutellum yellow-red with ivory spot postero-medially; metanotum yellow-red with ivory spot antero-medially; metapostnotum brown laterally and yellow-red medially; propodeum mostly yellow-red with brown transverse stripe anteriorly; propleuron yellow-brownish; meso- and metapleuron yellow-red. Metasoma black and yellow-red (Figs 1, 2); T1 black basally, yellow-red medially and brown apically; T2 mostly yellow-red with brown postero-medial spot; T3 yellow-red in basal half and dark brown in apical part; T4–T6 black; S1 black basally and yellow-red apically; S2 and S3 yellow-red; S4 brown; S5 and S6 black. Legs mostly yellow-red (Figs 1, 2); meso-, metafemur and metatibia brown apically. Fore wing slightly infusate with weak brownish spot on SMC2, and somewhat dark apical portion (Fig. 17). Hind wing slightly infusate with barely dark apical portion (Fig. 18).

Frons (Fig. 3) with indistinct median line in basal half; mesoscutum, mesoscutellum and metanotum with denser punctures and somewhat less polished than on frons; metapostnotum polished with fine transverse striae disconnected medially by longitudinal median furrow widened anteriorly (Figs 7, 8); propodeum matt with fine punctures in basal part and fine transverse striae in apical half; meso- and metapleuron somewhat polished with denser than on mesoscutum punctures. Metasoma mostly polished with dense fine punctures; T6 and S6 matt. Body without setae except following: frons along inner orbit with one long and few shorter light brown setae; clypeus with two long suberect light brown setae postero-medially; mandible with 3–4 suberect light brown setae medially and subapically; prementum with few long light brown scattered setae; procoxa and S2–S5 with scattered long light brown setae; T6–S6 with dense long and short erect setae. Mesosoma with inconspicuous gray micropubescence; metasoma with denser than on mesosoma appressed micropubescence.

Width of head in frontal view $1.1 \times$ its height. Vertex noticeably convex between eyes tops (Fig. 3). Lower frons strongly convex, upper frons gently convex (Fig. 4). Inner orbits weakly convergent below and subparallel above (Fig. 3). Half of MID $1.2 \times$ eye width. Posterior margin of vertex weakly concave (dorsal view) (Fig. 5). Clypeus width $2.3 \times$ its height; evenly convex medially with concavity anterolaterally;



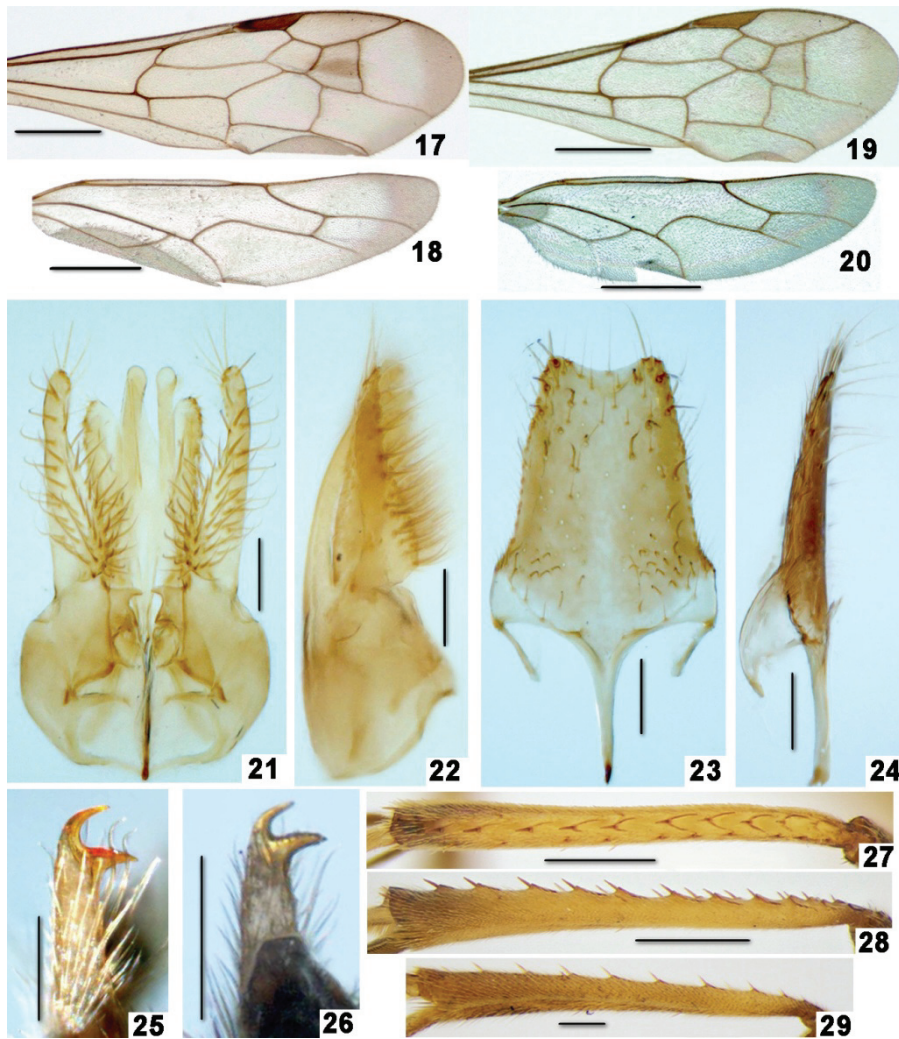
Figs 9–16. *Eopriocnemis albiflagellata* Loktionov et Lelej, **sp. n.**, paratype, ♂. 9 – habitus, dorsal view; 10 – habitus, lateral view; 11 – head, frontal view; 12 – head, lateral view; 13 – head, pronotum and mesoscutum anteriorly, dorsal view; 14 – mesosoma, lateral view; 15 – axilla, mesoscutellum, metanotum, metapostnotum, propodeum and T1, dorsal view; 16 – S5 posteriorly and S6, ventral view. Scale bar: 9, 10 = 1.0 mm; 11–13, 15 = 0.2 mm; 14 = 0.5 mm; 16 = 0.1 mm.

anterolateral corner broadly rounded; anterior margin indistinctly emarginate medially in frontal view (Fig. 3). Apical margin of labrum arcuately emarginate medially. Malar space $0.4\times$ pedicel width. Gena weakly narrowing posteriorly in lateral view (Fig. 4), and gently rounded in dorsal view (Fig. 5). Apex of apical flagellomere pointed. Length relation of scape, pedicel and all flagellomeres: 31:12:49:43:43:44:42:41:40:37:34:35. Pronotum in dorsal view narrowing anteriorly; shoulder gently rounded; dorsum along posterior margin noticeably depressed forming angulate shape in middle; posterior margin arcuately emarginate medially. Mesoscutum slightly sloped anteriorly; parapsids finely impressed touching anterior and posterior margins of mesoscutum. Discs of mesoscutellum and metanotum barely raised above level of mesoscutum and propodeum (Fig. 6). Metapostnotum medially with subparallel anterior and posterior margins; anteriorly almost straight, posteriorly with small median triangle (Figs 7, 8).

Fore wing (Fig. 17) with SMC2 receiving crossvein *1m-cu* at almost at middle; SMC2 $0.7\times$ SMC3 length on vein *M*, and $0.85\times$ SMC3 length on vein *Rs*; SMC3 receiving crossvein *2m-cu* somewhat basad at middle; crossvein *2rs-m* barely curved; crossveins *3rs-m* and *2m-cu* indistinctly S-shape curved; crossvein *cu-a* postfurcal. Hind wing on Fig. 18. Pro-, meso- and metatarsomere 1 with scattered short spines ventrally; protarsomere 2 with two rows of short spines ventro-laterally, two spines in each row; protarsomeres 3–5 without spines ventrally. Mesotarsomere 2 with three rows of short spines ventro-laterally, 2–3 spines in each row; mesotarsomere 3 with few short spines ventrally; mesotarsomeres 4 and 5 without spines ventrally. Metatarsomere 2 ventrally with median row consisting of three short spines and two spines on each sides of row preapically; metatarsomere 3 with median row consisting of two short spines ventrally; metatarsomeres 4 and 5 without spines ventrally. Metatibia dorsally with row of scale-like teeth each of them ending with short spine; outer side of dorsal face with row of spines (Figs 27, 28). Orbicula very small.

MALE. Body length 5.4 mm; fore wing length 4.9 mm. Head dark brown; clypeus ivory (Fig. 11); mandible ivory in basal half, light brown preapically and dark brown apically; antenna black with scape and pedicel yellow (Fig. 10); labial and maxillary palps yellow. Mesosoma brown and yellow (Figs 9, 10, 14); pronotum dark brown with transverse ivory stripes antero- and posterolaterally; mesoscutum dark brown; tegula pale; mesoscutellum brown with yellowish spot postero-medially; metanotum and metapostnotum brown; propodeum mostly yellow with brownish transverse stripe anteriorly; propleuron brown; mesopleuron yellow with anterior part brownish; metapleuron yellow. Metasoma brown with somewhat yellowish T1 and S1 apically, T2 and S2, T3 and S3 basally (Figs 9, 10). Legs mostly yellow (Figs 9, 10); metafemur and metatibia brownish apically. Fore wing slightly infuscate with indistinct brownish spot on SMC2, and somewhat darker apical portion (Fig. 19). Hind wing slightly infuscate (Fig. 20).

Frons with indistinct median line in basal half (Fig. 11). Mesoscutum, mesoscutellum and metanotum polished with denser and coarser punctures than on frons and pronotum; metapostnotum polished with indistinct transverse striae disconnected by longitudinal median furrow; metapostnotum posteriorly with median small matt triangle; propodeum polished with punctures somewhat larger than on mesoscutum;



Figs 17–29. *Eopriocnemis albiflagellata* Loktionov et Lelej, **sp. n.** 17, 18, 25, 27, 28 – holotype, ♀; 19–24, 29 – paratype, ♂. 17, 19 – fore wing; 18, 20 – hind wing; 21 – genitalia, ventral view; 22 – genitalia, lateral view; 23 – hypopygium, ventral view; 24 – hypopygium, lateral view; 25, 26 – metaclaw; 27 – metatibia, dorsal view; 28, 29 – metatibia, lateral view. Scale bar: 17–20 = 1.0 mm; 21–26 = 0.1 mm; 27, 28 = 0.5 mm; 29 = 0.2 mm.

meso- and metapleuron polished with fine punctures. Metasoma polished; terga with fine punctures; sterna without distinct punctures. Body without setae except following: frons along inner orbit with one long light brown setae; clypeus with few long suberect light brown setae anteriorly mandible with few suberect; light brown

setae medially; S2–S5 with scattered short erect setae; T6–S6 with dense short erect setae. Body with sparse gray micropubescence.

Width of head in frontal view $1.1\times$ its height. Frons evenly convex (Fig. 12). Inner orbits almost subparallel below and indistinctly divergent above (Fig. 11). Half of MID $1.2\times$ eye width. Posterior margin of vertex barely concave (dorsal view) (Fig. 13). Clypeus barely convex; anterolateral corner broadly rounded; anterior margin straight; width $2.6\times$ its height. Mandible with subapical blunt tooth. Malar space $0.45\times$ pedicel width. Gena noticeably widened posteriorly in lateral view (Fig. 12). Antenna slender (Fig. 10), relation of length of scape, pedicel and F1–F10: 22:10:25:22:25:24:24:23:22:22:21:21:? (apical flagellomere lost). Pronotum in dorsal view narrowing anteriorly; shoulder gently rounded; dorsum along posterior margin less depressed than in female and forming angulate shape in middle; posterior margin arcuately emarginate medially. Mesoscutum slightly sloped anteriorly; parapsids finely impressed not touching anterior margin of mesoscutum. Discs of mesoscutellum and metanotum barely raised above level of mesoscutum and propodeum (Fig. 14). Metapostnotum medially with anterior and posterior margins subparallel.

Fore wing (Fig. 19) with SMC2 receiving crossvein *1m-cu* somewhat basad at middle; SMC2 $0.8\times$ SMC3 length on vein *M*, and $1.1\times$ SMC3 length on vein *Rs*; SMC3 receiving crossvein *2m-cu* somewhat basad at middle; crossvein *2rs-m* barely curved; crossvein *3rs-m* almost straight; crossvein *2m-cu* indistinctly S-shape curved; crossvein *cu-a* postfurcal. Hind wing on Fig. 20. Protarsomere 1 with two rows of short and weak spines ventro-laterally, two spines in each row; protarsomeres 2–5 without spines ventrally; meso- and metatarsomere 1 with two rows of short spines ventro-laterally, 5–7 spines in each row; meso- and metatarsomere 2 with two rows of short spines ventro-laterally, two spines in each row; meso- and metatarsomeres 3–5 without spines ventrally. Metatibia outer side in dorsal view with row of spines. Orbicula very small. S6 posteriorly straight with arcuate projection medially and small straight tooth-like hook laterally (Fig. 16). Hypopygium in ventral view weakly widened basally and narrowed apically, with arcuately emarginated apical margin (Fig. 23); in lateral view flattened, somewhat convex baso-medially, with scattered long erect setae ventro-apically (Fig. 24). Paramere in lateral view widened basally and narrowing apically, with long bristles (Fig. 22); paramere and parapenial lobes equal in length, volsella somewhat shorter than paramere (Fig. 21).

DISTRIBUTION. China (Hainan).

ETYMOLOGY. The specific name *albiflagellata* originates from Latin *alba* (= white) and *flagellum* (=antenna) and refers to the coloration of female antenna which is black with F6–F9 entirely ivory-white.

SEX ASSOCIATION. We consider the female and male as opposite sexes of the same species based on the following characters: the pronotum in lateral view without anterior declivity, its dorsum barely convex (Figs 6, 14); the axillae broad and deep, not separated medially (Figs 8, 15); the metapostnotum long (Figs 8, 15); the T1 basally with long petiole (Figs 7, 15); similar venation of fore wing (Figs 17, 19); similar coloration and punctation of body (Figs 1, 2, 9, 10).

Key to the genera of the tribe Priocnemini

Females

1. Anterior margin of propodeum arched and steeply elevated over deeper metapostnotum. Mesosoma (dorsal view) distinctly narrowed near posterior margin of mesoscutum. Wings reduced, narrowed and diminished to vestigial with reduced venation *Claveliocnemis* Wolf
- Anterior margin of propodeum straight or weakly arched and hardly elevated over shallow metapostnotum. Mesosoma not narrowed near posterior margin of mesoscutum. Wings always normal-sized 2
2. Clypeus enlarged, much wider than LID. Crossvein *cu-a* of hind wing originating at or distally to fork of vein *M+Cu* 3
- Clypeus normal-sized, narrower than LID. Crossvein *cu-a* of hind wing originating basally to fork of vein *M+Cu* 5
3. Apical margin of clypeus weakly produced medially *Malloscelis* Haupt
- Apical margin of clypeus distinctly produced medially and laterally 4
4. Metatarsal claw with one additional tooth. Clypeus with depressed rim lateroapically. Mandible with one additional tooth *Priocnessus* Banks
- Metatarsal claw with two or three additional teeth. Clypeus without depressed rim lateroapically. Mandible usually with two additional teeth *Platydalepis* Haupt
5. Pronotum distinctly shortened, with well differentiated anterior vertical smooth face. Crossvein *cu-a* of fore wing originating at or weakly distally to fork *M+Cu*. Protibia dorso-apically with single very stout curved spine *Caliadurgus* Pate
- Pronotum normal-sized, without well differentiated vertical and smooth anterior face. Crossvein *cu-a* of fore wing originating distinctly distally to fork *M+Cu*. Protibia dorso-apically without single stout curved spine 6
6. Inner side of metatibia with longitudinal groove along upper margin of brush *Eopompilus* Gussakovskij
- Inner side of metatibia without longitudinal groove along upper margin of brush 7
7. Axillae broad and sometimes not separated medially, its posterior margin almost straight (Loktionov & Lelej, 2015: fig. D) 8
- Axillae narrow, wedge-like and broadly separated medially (Loktionov & Lelej, 2015: fig. E) 9
8. Abscissae *Rs3* and *Rs4* of fore wing not forming obtuse angle. T1 basally without petiole (Shimizu, 1994: fig. 335), sometimes with short petiole (Shimizu, 1994: fig. 336). Head and pronotum not polished, with dense punctures. S2 with strong transverse groove. F6–F9 entirely black *Priocnemis* Schiødte
- Abscissae *Rs3* and *Rs4* of fore wing forming distinct obtuse angle (Fig. 17). T1 basally with long and narrow petiole (Fig. 7). Head and pronotum strongly polished, with scattered very fine punctures (Figs 3–5). F6–F9 entirely ivory (Figs 1–3). S2 with very fine transverse groove *Eopriocnemis* Loktionov et Lelej, **gen. n.**
9. F1 6.0–7.0× as long as thick, 0.9× UID. Orbicular pecten with 8–10 strong long, distinctly decurved setae; arolium abnormally large, apically extending beyond apex of tarsal claw. Mesotibia dorsally almost without spines. Each scale-like tooth dorsally on metatibia without setae, strongly polished. Propodeum without sublateral longitudinal impression from spiracle towards apex *Ctenopriocnemis* Ishikawa

- F1 4.2–5.0× as long as thick, 0.8× UID. Orbicular pecten with six weak shorter, scarcely decurved setae; arolium normal, apically never extending beyond apex of tarsal claw. Mesotibia dorsally with a few short spines. Each scale-like tooth dorsally on metatibia with setae, not polished. Propodeum with distinct or weak sublateral longitudinal impression from spiracle towards apex *Clistoderes* Banks

Males (unknown in *Claveliocnemis* Wolf)

1. Clypeus enlarged, much wider than LID 2
 - Clypeus normal-sized, narrower than LID 4
2. Protarsal claws symmetrical *Malloscelis* Haupt
 - Protarsal claws asymmetrical 3
3. Protarsal claws with outer ray more elongate and more strongly curved than that of inner one. Mandible with two additional teeth *Platydialepis* Haupt
 - Protarsal claws with inner ray more elongate and more strongly curved than that of outer. Mandible with one additional tooth *Priocnessus* Banks
4. Anterior face of pronotum flat and vertical well differentiated from dorsal face. Meso- and metatibial spurs whitish. Propodeum with dense silver short suberect setae divergenced from midline *Calidurgus* Pate
 - Anterior face of pronotum more or less convex, indistinctly differentiated from dorsal face. Meso- and metatibial spurs black, brown, and yellow-brown. Propodeum at most with sparse erect setae not divergenced from midline 5
5. T6 posteriorly with transverse row of dense short equal length bristles. Flagellomeres distinctly serrate or distinctly convex ventrally. Hypopygium narrow or capitate apically *Eopompilus* Gussakovskij
 - T6 posteriorly without transverse row of dense short bristles. Flagellomeres not serrate, at most weakly convex ventrally. Hypopygium broad and flattened 6
6. Axillae broad and sometimes not separated medially, its posterior margin almost straight (Loktionov & Lelej, 2015: fig. D) 7
 - Axillae narrow, wedge-like and broadly separated medially (Loktionov & Lelej, 2015: fig. E) 8
7. Abscissae *Rs3* and *Rs4* of fore wing not forming obtuse angle. Pterostigma distinctly shorter than SMC2. T1 basally without distinct petiole. Head and mesosoma matt or weakly polished with dense punctures *Priocnemis* Schiødte
 - Abscissae *Rs3* and *Rs4* of fore wing forming distinct obtuse angle (Fig. 19). Pterostigma distinctly longer than SMC2 (Fig. 19). T1 basally with long and narrow petiole (Fig. 15). Head and mesosoma strongly polished with scattered very fine punctures (Figs 11–15) ... *Eopriocnemis* Loktionov et Lelej, **gen. n.**
8. Propodeum with sublateral longitudinal impression from spiracle towards apex. F1 2.9–3.3× as long as thick, 0.5× UID. Orbicular pecten with 5–6 weak setae *Clistoderes* Banks
 - Propodeum without sublateral longitudinal impression from spiracle towards apex. F1 3.6–4.1 × as long as thick, 0.7 × UID. Orbicular pecten with 8–10 strong setae *Ctenopriocnemis* Ishikawa

ACKNOWLEDGEMENTS

We would like to thank Dr. Akira Shimizu (Tokyo Metropolitan University, Japan) for his valuable suggestions concerning the new genus. The work was supported

by the Russian Found of Basic Research (No 17–04–00259) for VML and ASL, and the National Basic Research Program of China (No 2013CB127600) for JXL.

REFERENCES

- Aguiar, A.P., Deans, A.R., Engel, M.S., Forshage, M., Huber, J.T., Jennings, J.T., Johnson, N.F., Lelej, A.S., Longino, J.T., Lohrmann, V., Mikó, I., Ohl, M., Rasmussen, C., Taeger, A. & Yu, D.S.K. 2013. Order Hymenoptera. In: Zhang Z.-Q. (Ed.), *Animal Biodiversity: An Outline of Higher-level Classification and Survey of Taxonomic Richness (Addenda 2013)*. *Zootaxa*, 3703: 51–62. DOI: <http://dx.doi.org/10.11646/zootaxa.3703.1.12>
- Banks, N. 1934. The Psammocharidae of the Philippines. *Proceedings of the American Academy of Arts and Sciences*, 69(1): 1–117. DOI: <http://dx.doi.org/10.2307/20023025>
- Day, M.C. 1988. *Spider wasps Hymenoptera: Pompilidae*. Royal Entomological Society of London, Dorchester, 60 pp. [Dolling, W.R. & Askew, R.R. (Eds.), *Handbooks for the Identification of British Insects*, 6(4)].
- Engel, M.S. & Grimaldi, D.A. 2006. The first cretaceous spider wasp (Hymenoptera: Pompilidae). *Journal of the Kansas Entomological Society*, 79(4): 259–368.
- Haupt, H. 1935. Schwedisch-chinesische wissenschaftliche Expedition nach den nordwestlichen Provinzen Chinas, unter Leitung von Dr. Sven Hedin und Prof. Sü Ping-Chang. Insekten gesammelt vom schwedischen Arzt der Expedition Dr. David Hummel 1927–1930. 24. Hymenoptera. 2. Psammocharidae. *Arkiv för Zoologi*, 27A(10): 1–21.
- Haupt, H. 1938. Psammocharidae vom unteren Yang-Tse. *Notes d'Entomologie Chinoise, Shanghai*, 5(5): 33–48.
- Hua, L.-Z. 2006. *List of Chinese Insects. Volume IV*. Sun Yat-sen University Press, Guangzhou, 540 pp.
- Hymenoptera Anatomy Consortium. 2013. *Hymenoptera Glossary*. Available from: <http://glossary.hymao.org> (accessed 10 January 2019)
- Ishikawa, R. 1965. Studies on some Taiwan Pompilidae (Hymenoptera). *Kontyû*, 33(4): 507–520.
- Ji, X.-L., Li, C.-Y., Ma, L. & Li, Q. 2014. A new species of *Minagenia* Banks, 1934 (Hymenoptera, Pompilidae) from China, with the key to species. *Zootaxa*, 3795(5): 585–589. DOI: <http://dx.doi.org/10.11646/zootaxa.3795.5.8>
- Ji, X.-L., Li, C.-Y., Ma, L. & Li, Q. 2015a. A new species of *Eopompilus* Gussakovskij (Hymenoptera: Pompilidae) from China, with an updated key to the species. *Entomotaxonomia*, 37(4): 1–6. DOI: <http://dx.doi.org/10.11680/entomotax.2015038>
- Ji, X.-L., Li, C.-Y., Ma, L. & Li, Q. 2015b. Taxonomy of Pepsini (Hymenoptera: Pompilidae) from Yunnan Province. *Journal of Yunnan Agricultural University*, 30(2): 203–212.
- Jiang, X., Lu, H., Li, Q. & Ma, L. 2016. Notes on the *Ceropales* (*Ceropales*) *maculata* group (Hymenoptera: Pompilidae) with description of a new species from China. *Entomotaxonomia*, 38(3): 235–242. DOI: <http://dx.doi.org/10.11680/entomotax.2016028>
- Lelej, A.S. & Loktionov, V.M. 2012. 59. Fam. Pompilidae (Psammocharide) – Spider wasps. In: Lelej A.S. (Ed.), *Annotated catalogue of the insects of Russian Far East. Volume I. Hymenoptera*. Dalnauka, Vladivostok, pp. 407–414. [In Russian]
- Li, C.-Y., Ji, X.-L., Ma, L. & Li, Q. 2014. The genus *Batozonellus* from China with description of a new species (Hymenoptera: Pompilidae). *Zoological Systematics*, 39(4): 555–560. DOI: <http://dx.doi.org/zs20140408>
- Li, C.-Y., Ma, L. & Li, Q. 2015. Three new species of the genus *Telostholus* Haupt from China, with a key to the species of the genus (Hymenoptera: Pompilidae). *Entomologica Americana*, 121(4): 27–34. DOI: <http://dx.doi.org/10.1664/14-RA-017.1>

- Loktionov, V.M. & Lelej, A.S. 2014. *Spider wasps (Hymenoptera: Pompilidae) of the Russian Far East*. Dalnauka, Vladivostok, 472 pp. [In Russian]
- Loktionov, V.M. & Lelej, A.S. 2015. Keys to the genera of the spider wasps (Hymenoptera: Pompilidae) of Russia and neighbouring countries, with check-list of genera. *Zootaxa*, 4034(1), 87–111. DOI: <http://dx.doi.org/10.11646/zootaxa.4034.1.4>
- Loktionov, V.M. & Lelej, A.S. 2017. An annotated catalogue of the spider wasps (Hymenoptera: Pompilidae) of Russia. *Zootaxa*, 4280(1): 1–95. DOI: <http://dx.doi.org/10.11646/zootaxa.4280.1.1>
- Loktionov, V.M. & Lelej, A.S. 2018. To the knowledge of genus *Nipponodipogon* Ishikawa, 1965 (Hymenoptera: Pompilidae, Pepsinae) from Laos. *Far Eastern Entomologist*, 363: 1–7. DOI: <https://doi.org/10.25221/fee.363.1>
- Loktionov, V.M., Lelej, A.S. & Liu, J.-X. 2018. Contribution to the knowledge on the spider wasps genus *Morochares* Banks, 1934 (Hymenoptera: Pompilidae) from China. *Zootaxa*, 4462(4): 497–510. DOI: <https://doi.org/10.11646/zootaxa.4462.4.3>
- Loktionov, V.M., Lelej, A.S. & Xu, Z.-F. 2017. Review of the genus *Eopompilus* Gussakovskij, 1932 (Hymenoptera: Pompilidae) with the description of new species from China. *Zootaxa*, 4277(3): 413–426. DOI: <https://doi.org/10.11646/zootaxa.4277.3.6>
- Lu, H., Jiang, X., Li, Q. & Ma, L. 2016. A new species and a new record subspecies of *Ceropales* Latreille, with a key to the genus from China (Hymenoptera: Pompilidae). *Zoological Systematics*, 41(3): 294–299. DOI: <https://doi.org/10.11865/zs.201631>
- Ma, F.-Z. & Li, Q. 2010a. Ten newly recorded species of Pompilidae (Hymenoptera: Pompilidae) from China. *Entomotaxonomia*, 33(1): 74–76.
- Ma, F.-Z. & Li, Q. 2010b. Pompilidae. In: Ren, G.D. (Ed.), *Fauna of Invertebrata from Liupan Mountain*. Press of Hebei University, Baoding, pp. 366–368. [In Chinese]
- Ma, F.-Z. & Li, Q. 2013. Pompilidae. In: Ren, G.D., Guo, S.B. & Zhang, F. (Eds.), *Fauna of Insects from Xiaowutai Mountain*. Press of Hebei University, Baoding, pp. 445–447. [In Chinese]
- Pitts, J.P., Wasbauer, M.S. & von Dohlen, C.D. 2006. Preliminary morphological analysis of relationships between the spider wasp subfamilies (Hymenoptera: Pompilidae): revisiting an old problem. *Zoologica Scripta*, 35: 63–84. DOI: <http://dx.doi.org/10.1111/j.1463-6409.2005.00217.x>
- Shimizu, A. 1994. Phylogeny and classification of the family Pompilidae. *Tokyo Metropolitan University, Bulletin of Natural History*, 2: 1–142.
- Tsuneki, K. 1989. A study on the Pompilidae of Taiwan (Hymenoptera). *Special Publications of the Japan Hymenopterists Association*, 35: 1–180.
- Wahis, R., Lelej, A.S. & Loktionov, V.M. 2018. Contribution to the knowledge of the genus *Eopompilus* Gussakovskij, 1932 (Hymenoptera, Pompilidae). *Far Eastern Entomologist*, 361: 1–11. DOI: <http://doi.org/10.25221/fee.361.1>
- Waichert, C., Rodriguez, J., Wasbauer, M.S., von Dohlen, C.D. & Pitts, J.P. 2015. Molecular phylogeny and systematics of spider wasps (Hymenoptera: Pompilidae): redefining subfamily boundaries and the origin of the family. *Zoological Journal of the Linnean Society*, 175: 271–287. DOI: <http://dx.doi.org/10.1111/zoj.12272>
- Wu, C.F. 1941. *Catalogus insectorum Sinensium. Volume VI*. Yenching University, Peiping [=Beijing], x + 334 pp.