



A new genus and two new species of gelechiid moths (Lepidoptera, Gelechiidae, Gelechiinae) from the East Malaysia with unusual male secondary characters

MARGARITA G. PONOMARENKO^{1,2,*} & MICHAEL M. OMELKO^{1,3}

¹Federal Scientific Center of the East Asia Terrestrial Biodiversity, Far Eastern Branch of the Russian Academy of Sciences, Vladivostok, 690022, Russia

²e-mail: margp@biosoil.ru; <https://orcid.org/0000-0003-4566-6837>

³e-mail: mmomelko@mail.ru; <https://orcid.org/0000-0003-2991-7544>

*Corresponding author: margp@biosoil.ru

Abstract

A new genus *Esexalata* **gen. n.** and two new species (*E. beljaevi* **sp. n.**, type species, and *E. natalyae* **sp. n.**) are described and illustrated from East Malaysia. Males of the new taxa possess unique metathoracic and abdominal androconial structures and wing-like structures on the metascutum. The taxonomic position of the new genus within the family Gelechiidae is discussed.

Key words: new taxa, thoracic and abdominal morphostructures, *Sabaha*, *Gelechia*.

Introduction

The taxonomic diversity of the gelechiid moths in South-East Asia is very poorly studied. At the end of the 20th century, the number of known species that existed in this area was estimated at approximately 350 species, of which only 29 species were recorded in West Malaysia and Borneo (Meyrick 1925; Gaede 1937; Robinson *et. al* 1994). Only seven species from seven genera have been described from Malaysia (*Hypatima pilosella* (Walker), *Trichotaphe contentella* (Walker), *Dichomeris traumatias* (Meyrick), *Telphusa exposita* Meyrick, *Onebala lithostrota* Meyrick, *Brachmia strigosa* Meyrick, *Anarsia sthenarota* Meyrick); almost all of them are from the states of Sarawak and Sabah (Walker 1864; Meyrick 1910, 1916, 1923, 1926).

At the beginning of the 21st century, the intensive study of Malaysian gelechiids has continued mainly from the Eastern states of Sarawak and Sabah: to date six genera and 28 species have been described, and one species was recorded in this territory for the first time (Omelko & Omelko 2019a–b, 2020a–b, 2021a–b, 2022a–b, Ponomarenko *et. al* 2021a–c, 2023). By now the number of known taxa from the Malaysian territory of Borneo has increased to 46 species belonging to 24 genera.

The present work continues a series of papers devoted to the study of Gelechiidae of East Malaysia, and is based on material collected in the valley dipterocarp forest in the state of Sabah at the end of the last century and until recently was stored in the collection of the V.L Komarov Mountain-Taiga Station (Gornotajezhnoe, Ussurijsk, Russia).

Material and methods

This paper is based on the material collected by the second author in the vicinity of Tawau, East Malaysia, Borneo in 1995. The specimens were attracted to mercury-vapor lamps. The male and female genitalia were prepared by standard techniques including maceration of the soft tissue in 10–15% KOH (Falkovich & Stekolnikov 1978). The membranous parts in the male and female genitalia were stained by Chlorazol black. After their examination, the genitalia of both sexes were slide-mounted using Euparal following Robinson (1976). Photographs of adults

and details of external morphology were made with a Nikon D300 camera equipped with 50 mm Macro lens and an Olympus SZX16 microscope with an incorporated digital camera DP74 Nikon. The latter was used for taking photographs of slide-mounted genitalia. Some photographs of genital structures in larger magnification were taken using microscope Zeiss Axioskop 40 equipped with digital camera AxioCam HRc.

The genital terminology follows Klots (1970) with modifications by Ponomarenko (2005, 2009). With respect to the morphology of the male copulatory organ, we use the following terms for describing the parts of the phallus complex: phallic sclerotised tube = aedeagus; phalotheca = anellus; endophallus = vesica with cornuti and ductus ejaculatorius (Snodgrass 1935; Kuznetsov & Stekolnikov 2001; Kristensen 2003). The term “fultura superior” for the sclerite, located proximal to the gnathos, is used following Huemer & Karsholt (1999). The terminology of external morphological structures follows Scoble (1992) and Kristensen (2003).

For name formation from Latin roots and naming of new taxa, we followed Dvoretzky (1976) and Kirpicznikov & Zabinkova (1977).

The holotype and paratypes of the new species are deposited in the Federal Scientific Center of the East Asia Terrestrial Biodiversity, Far Eastern Branch of Russian Academy of Sciences (Vladivostok).

The following abbreviations were used in the text:

FSCB—Federal Scientific Center of the East Asia Terrestrial Biodiversity, place of type material depository; GS—genital slide; MP—slide prepared by M.G. Ponomarenko.

Description of new taxa

Esexalata Ponomarenko et M. Omelko gen. n.

Type species: *Esexalata beljaevi* sp. n. by present designation.

Included species: *E. beljaevi* sp. n. and *E. natalyae* sp. n.

Diagnosis. The new genus is similar to the genus *Sabaha* M. Omelko et N. Omelko, 2019 by general appearance, ciliate flagellum in males, semi-transparent area with piliform and forked scales on the hindwings; by male genitalia with hood-shaped uncus, well-developed culcitula of gnathos, fultura superior present, valva deeply divided into cucullus and sacculus, juxta consisting of two lobes integrated with vinculum (Omelko & Omelko 2019b); by female genitalia with long ovipositor, elongated 8th segment, 8th sternite anteriorly covered by semi-sclerotised fold with honeycomb-like sculpture on inner surface (Ponomarenko *et al.* 2023). The new genus differs from the related genus by forewings shimmer with metallic colours due to the optical interference and lacking semi-transparent area and by the presence of unique wing-like structures shimmer with the colours of the rainbow and long hair-pencils on the metascutum in males. Furthermore, the new genus differs from *Sabaha* by the male genitalia with the cucullus bearing setae on lateral side instead of medial side and presence of cornuti in the aedeagus and by female genitalia with the corpus bursae lacking signum. Whereas in the genus *Sabaha* the males without cornuti in the aedeagus, and females with signa in the corpus bursae.

Adult (Figs 1–19). *Head.* Antenna in males with dorso-ventrally flattened scapus, a length of which 2 times longer than distance between eyes in front and its distal part more than 3 times wider than flagellomere in middle of flagellum (Figs 3–4a). It bears dense interrupted row of elongate scales on anterior edge, flagellum with long cilia on ventral side (Figs 4–6). Basal segment of labial palpus one-third length of second; second segment with two dense rows of scales on ventral side, each row protruding at an angle; third segment with tuft of scales on dorsal side at middle or beyond.

Thorax. Forewing length 3.8–5.2 mm. Forewing dark brown with yellow spots and bands, differentiated into zones with ordinary scales and modified scales, shimmering with metallic green and pink colours due to optical interference in both sexes (Figs 1, 2, 10, 11). Hindwing with semi-transparent area covered by piliform and forked scales (Figs 12, 13). Metathorax of males with two wing-like structures folded crosswise between wing bases, each wing-like structure located slightly medial-caudally compared to base of hindwing (Figs 8, 17). Each wing-like structure formed by elongated, fused in 2/3 distal part, flat and enlarged scales and remaining separate at hair-like base. A dense and long hair-pencil located under each wing-like structure arises from same base (Figs 7, 9). Females have no such wing-like structures, but with bundles of elongate hair-like scales on metascutum. Forewing with Sc to costa at about middle of wing length; R₁–R₅ to costa, R₁, R₂ and R₃ separate at base, R₄ and R₅ stalked basally,

diverging before middle, stem R_{4+5} and M_1 connate basally, M_1 – CuA_2 to termen, M_2 and M_3 stalked basally; CuA_1 and CuA_2 free basally; 1A and 2A merged distally. Hindwing with Sc to costa beyond 2/3 of wing length, Rs to costa before apex, Rs and M_1 shortly stalked basally, M_2 and M_3 separate, to termen; CuA_1 and CuA_2 free basally, CuA_1 to tornus and CuA_2 to dorsal margin (Fig. 14).

Abdomen. First abdominal tergite in males with loop-shaped sclerotisation extending from base of tergite to approximately 3/5 of its length parallel with lateral sides, then curved at an angle before rounded convex distal part. Its surface with cellular sculpture (Figs 15, 16, 19). Second abdominal sternite in both sexes with relatively long well-developed apodemes, venulae long, curved medially and semi-oval notch near anterior margin bounded by a fold on right side (Figs 15, 19, 36).

Male genitalia (Figs 20–25, 27–29, 31, 32). Uncus relatively small, hood-shaped. Gnathos with well-developed culcitula divided by longitudinal median constriction into two portions, and with small and flat median sclerite. Two longitudinal flat sclerites, termed “fultura superior” medially fused into a loop (Fig. 32). Culcitula, lateral lobes of tegumen and fultura superior covered by small spines (Fig. 31). Tegumen with lateral membranous areas that allow bending ventrally. Valva deeply divided into cucullus and sacculus. Cucullus with relatively long neck and enlarged basally and distally, its distal part bearing setae on lateral surface (Fig. 25). Sacculus lamellar, narrowed beyond middle, with enlarged basal part and claw-like apex curved ventrally. Aedeagus tubular, more or less arcuately curved, with rounded flat apex, cornuti needle-shaped or filiform, without caecum, opening for ejaculatory ductus shifted on dorsal side and proximally bordered by a ribbon-like apodeme for phallic muscles; fixed at basal 1/3 by semi-sclerotised anellus. Juxta represented by two lateral lobes integrated with vinculum, near triangular in shape. Vinculum with wide triangular lateral parts and ventral excision, saccus wide and triangular.

Female genitalia (Figs 33–35). Papillae anales oblong and relatively small. Ovipositor long, membrane between segment 8 and 9 more than 3 times longer than papillae anales (on the female of *E. beljaevi* only), 8th segment strongly elongated; sternite in proximal part covered by semi-sclerotised fold with honeycomb-like sculpture on inner surface. Vaginal part of ductus bursae widened, ductus bursae membranous, smoothly dilated towards corpus bursae; the latter membranous and lacking signum. Ductus seminalis arising beyond vaginal part of ductus bursae.

Distribution. Malaysia (Sabah).

Etymology. The genus name is composed of the Latin words “sex” and “alata” with the prefix “e” meaning “not six-winged”, generic name is feminine.

Esexalata beljaevi Ponomarenko et M. Omelko sp. n.

(Figs 1, 3, 4a, 5–11, 20–26, 33–35)

Type material. Holotype: ♂, Borneo, E Malaysia, state of Sabah, 24 km N Tawau, 20.viii 1995, GS 221 MP (leg. M. Omelko), FSCB.

Paratypes: 3♂, 4♀, same locality, 19–22, 29.viii, 01.ix 1995, GS 222–224 (♂♂), 225–228 (♀♀) MP (leg. M. Omelko), FSCB.

Diagnosis. The new species differs from its similar species described below by the relatively larger size of adult and the elongated yellow spots on forewings, by the cucullus with triangular ventral lobe in proximal part and maximal width of distal part three times wider than width of saccular distal part, and the aedeagus with rounded apex and with one thorn-shaped and 10–11 needle-shaped cornuti.

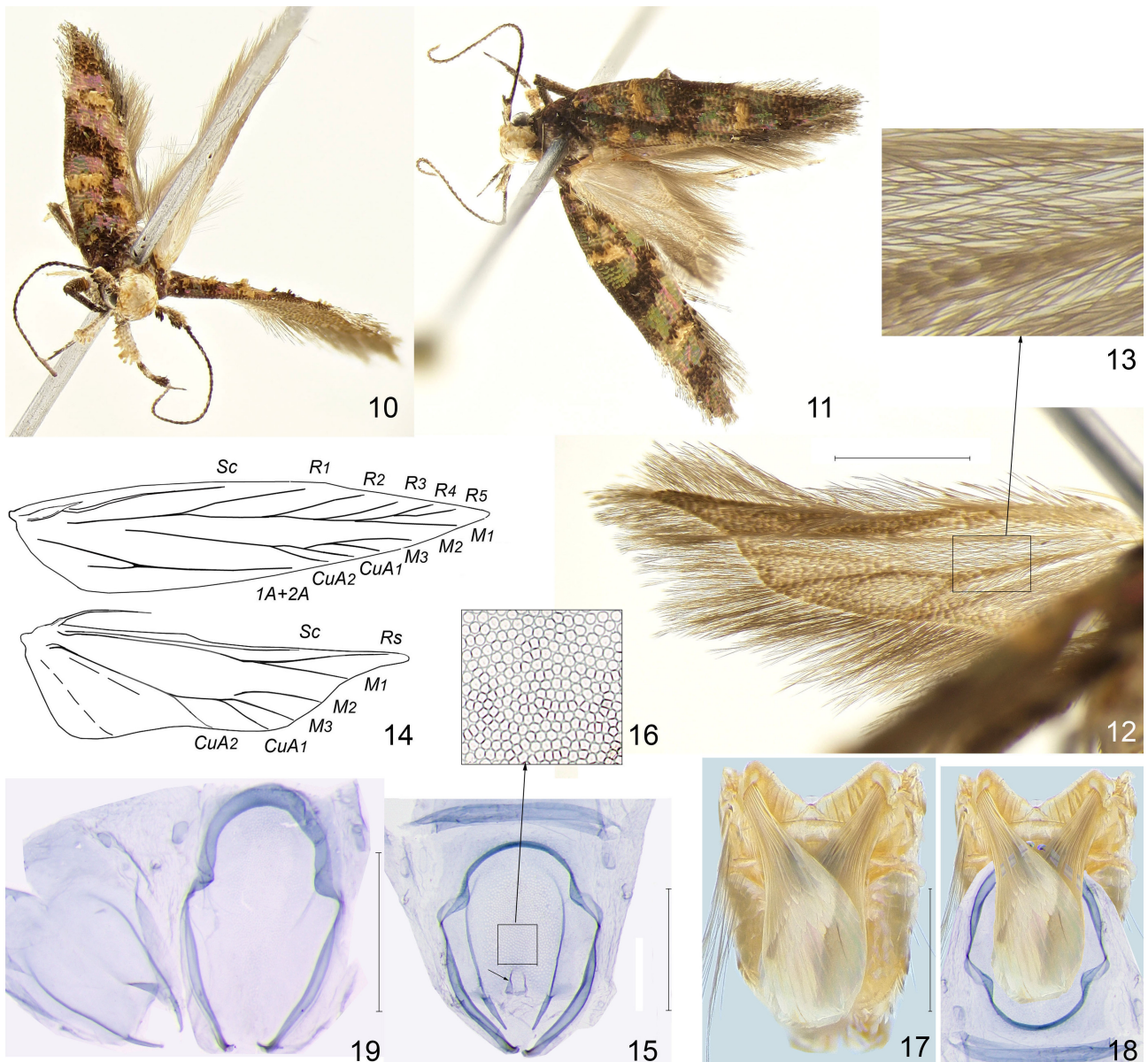
Description. Adult (Figs 1, 3, 4a, 5–11). Head with mainly monochrome light beige, beige and grey scales, a few scales brownish distally. Scapus more or less monochromatic pale greyish, with a blackish brown indistinct median band and with row of elongate black scales along anterior margin interrupted before middle; pedicellus and basal flagellomeres widened, and wider in males; flagellum black, with dispersed whitish scales, and with long cilia on ventral side in males (Figs 3, 4a, 5, 6). First segment of labial palpus black; second segment light grey, beige or dark beige with black base; third segment light beige or beige in proximal half, concolorous or with darker shading and black in distal part, with tuft of scales near middle of upper side. Thorax brown in male and black in female, patagia and tegula black. Forewing length 4.5–5.2 mm. Forewing brownish with dark brown base, concolorous transverse bands beyond middle and at 4/5; pattern formed by transverse strokes of raised dark yellow scales: two along dorsal margin on proximal half, one costal stroke and one median stroke at 1/3 and 2/3 of wing length, respectively; fringe dark grey with whitish tips (Fig. 1). Hindwing brownish grey with brownish and dark grey

fringe. Legs brownish with scattered whitish scales and with blackish shading on outer side more distinct in females; dorsal edge of hind tibia with brush of light grey scales in males and dark grey ones in females.

Segment 8 with elongate tergite slightly widened towards base, and semi-oval sternite with broadly rounded posterior margin (Fig. 26).



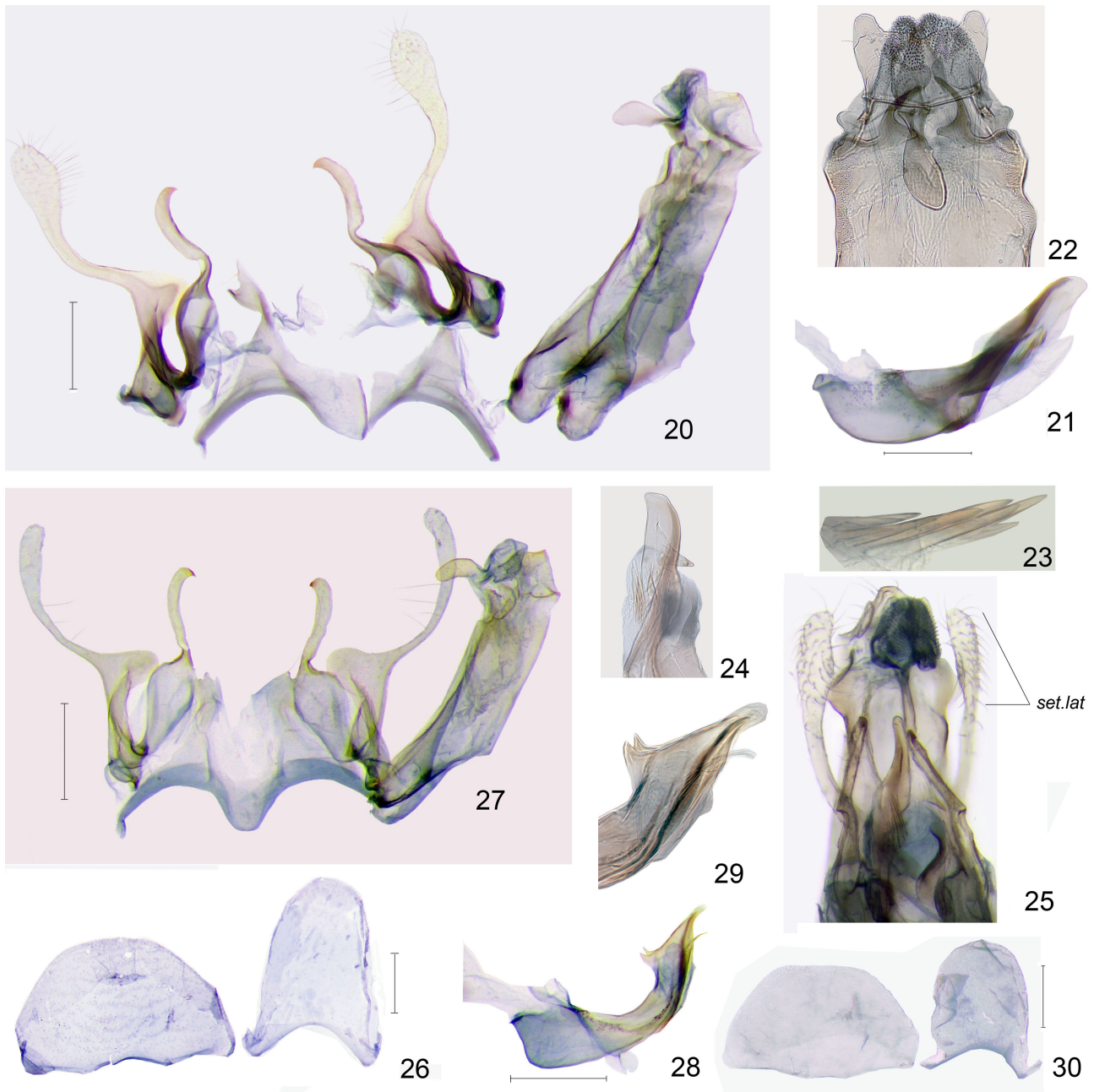
FIGURES 1–9. *Esexalata* **gen. n.**, external morphology. 1, 3, 4a, 5–9—*E. beljaevi* **sp. n.**: 1—adult, holotype, male; 3—head, basal part of antenna and labial palpus, paratype, female; 4a—magnified scapus, pedicellus and base of flagellum, ventral view; 5—basal part of ciliate flagellum in male, dorsal view; 6—ditto, ventral view; 7—wing-like structure and hair-pencil in male, dorsal view, enlarged; 8—wing-like structures folded crosswise on the thorax in male; 9—hair-pencil under lifted wing-like structure in male; 2, 4—*E. natalyae* **sp. n.**: 2—adult, holotype, male; 4—ciliate antenna in male. Scale bar for figures 1, 2—1 mm; for figure 7—0.5 mm. *pd*—pedicellus, *sc*—scapus.



FIGURES 10–19. *Esexalata* gen. n., external morphology, wing venation and basal abdominal segments. 10–18—*E. beljaevi* sp. n.: 10—adult, view of wings with optical interference effect, paratype, female; 11—ditto, same specimen, photographed from a different angle; 12—hindwing with semi-transparent area covered by piliform and forked scales, paratype, female; 13—fragment of semi-transparent area on the hindwing with piliform and forked scales; 14—wing venation, paratype, female; 15—1st tergite with glandular area and 2nd sternite with semi-oval notch (shown by arrow), holotype, male; 16—fragment of glandular area on 1st tergite, enlarged; 17—position of wing-like structure on the thorax, paratype, male; 18—modeling with the application of wing-like structure and hair-pencil underneath on the base of the abdomen (1st tergite); 19—*E. natalyae* sp. n., 1st tergite (right) and 2nd sternite (left), paratype, male. Scale bar for figure 12—1 mm; for figures 15, 17, 19—0.5 mm.

Male genitalia (Figs 20–25). Uncus with flat posterior margin and semi-oval lateral lobes (Fig. 22). Culcitula of gnathos divided into two parts by median constriction; median sclerite of gnathos with convex ventral margin and relatively smooth dorsal edge with indistinct median notch. Cucullus with maximal width of its distal part three times wider than width of sacculus in distal part, with large triangular lobe on ventral margin of proximal part. Sacculus widened in basal part (ratio of maximal widths in basal and distal parts 2.5:1), narrowed beyond middle and parallel-sided in distal part, and with claw-like apex directed ventrally. Aedeagus relatively large, almost equal to cucullus in length, tube-like and slightly arched, with rounded flat apex and without caecum, opening for ejaculatory ductus on dorsal side and proximally bordered by a ribbon-like apodeme for phallic muscles; fixed at basal 1/3 by

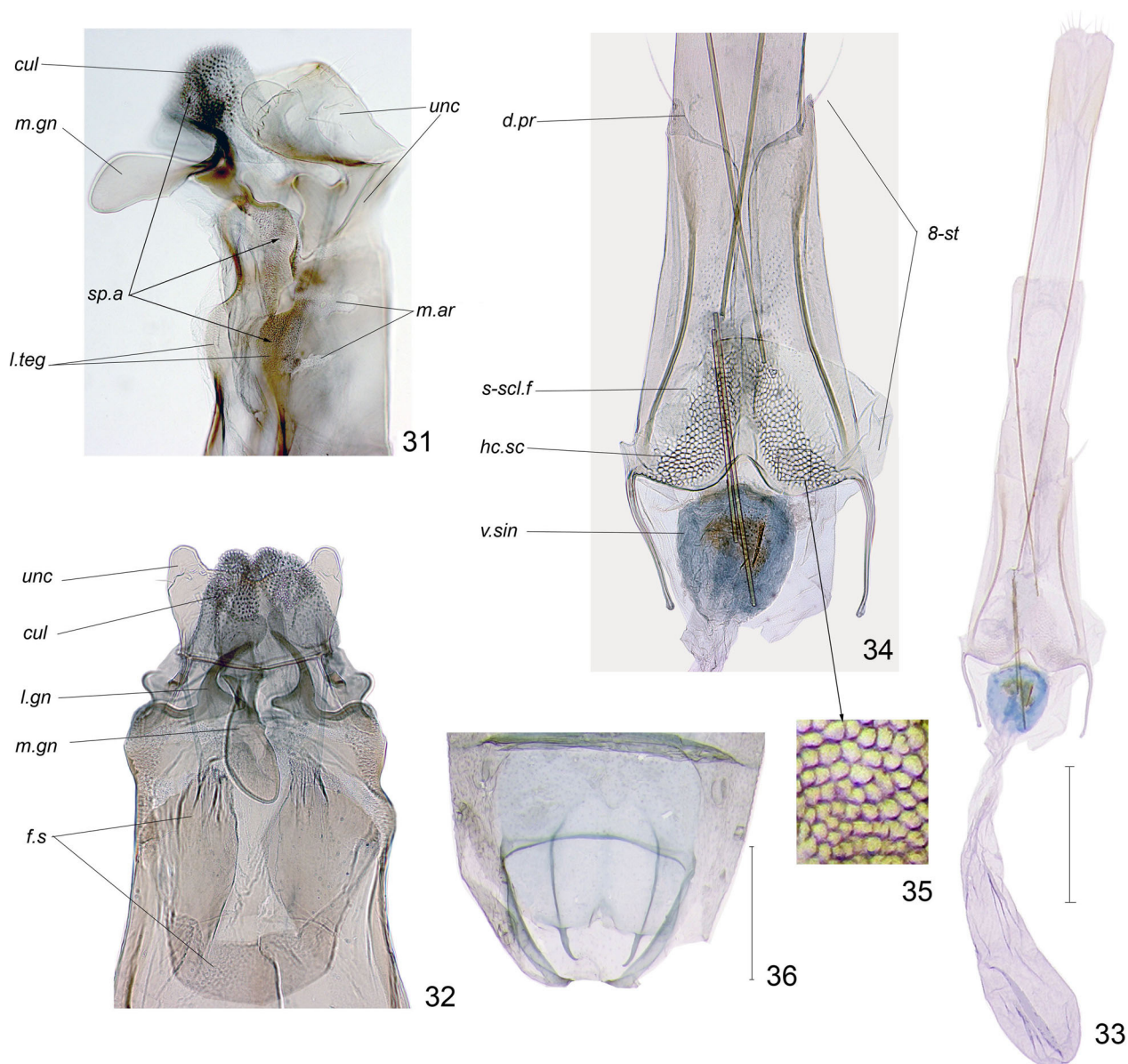
semi-sclerotised anellus, vesica with one thorn-shaped and 10–11 straight needle-shaped cornuti (Figs 23, 24). Juxta consisting of two lateral lobes, each with notch on posterior margin, integrated with vinculum. Vinculum strongly widened laterally and with deep notch on posterior margin, saccus wide, triangular and with rounded apex.



FIGURES 20–30. *Esexalata* gen. n., male genitalia and 8th abdominal segments. 20–26, *E. beljaevi* sp. n.: 20—unrolled, medial view, holotype, GS 221 MP; 21—aedeagus, lateral view, left side, holotype, GS 221 MP; 22—uncus, gnathos with culcitula, ventral view, paratype, GS 223 MP; 23—row of needle-shaped cornuti in aedeagus; 24—distal part of aedeagus, right side, paratype, GS 223 MP; 25—distal part of genitalia in glycerol; 26—sternite (left) and tergite (right) of 8th abdominal segment, paratype, male; 27–30, *E. natalyae* sp. n.: 27—unrolled, medial view, holotype, GS 229 MP; 28—aedeagus, lateral view, left side, holotype, GS 229 MP; 29—distal part of aedeagus with bundle of long filiform cornuti; 30—sternite (left) and tergite (right) of 8th abdominal segment, paratype, male. Scale bar 0.2 mm with the exception of enlarged figures 22, 23 and 29. *set. lat*—setae on the lateral side of cucullus.

Female genitalia (Figs 33–35). Apophyses posteriores 6,6 times longer than apophyses anteriores. 8th segment with lateral digitiform projections on posterior margin bearing long setae and sinuous ribbon-like sclerotisations stretching from these projections and further on sides of sternal area (Fig. 34). Anterior margin of sternite 8 with rounded lobes divided by triangular notch. Vaginal part of ductus bursae cup-shaped, with a transverse, narrow, band-like sclerite and an asymmetric, gutter-like sclerite; latter sclerite with distinct right rib about 4 times longer than indistinct left one.

Etymology. The species is named after Dr. Evgeny A. Beljaev, a famous expert with the geometroid moths and who made a great contribution to the study of morphology, fauna, phylogeny and taxonomy of these insects. A noun in the genitive case.



FIGURES 31–36. *E. beljaevi* sp. n., genitalia and basal abdominal segments: 31—uncus, gnathos with culcitula and distal part of tegumen with spinose areas, lateral view, enlarged, holotype, GS 221 MP; 32—ditto, ventral view, enlarged, paratype, GS 223 MP; 33—female genitalia, ventral view, paratype, GS 227 MP; 34—ditto, 8th sternite and vaginal sinus, enlarged; 35—ditto, fragment of honeycomb-like sculpture on inner surface of semi-sclerotised fold; 36—1st tergite and 2nd sternite in female, GS 227 MP. Scale bar for figures 33 and 36—0.5 mm. *cul*—culcitula, *d.pr*—digitiform projection, *f.s*—fultura superior, *hc.sc*—honeycomb-like sculpture, *l.gn*—lateral sclerites of gnathos, *l.teg*—lateral lobes of tegumen with spines, *m.ar*—lateral membranous areas, *m.gn*—median sclerite of gnathos, *s-scl.f*—semi-sclerotised fold, *sp.a*—spinose areas, *unc*—uncus, *v.sin*—vaginal sinus, *8-st*—8th sternite.

Esexalata natalyae Ponomarenko et M. Omelko sp. n.

(Figs 2, 4, 27–30)

Type material. Holotype: ♂, Borneo, E Malaysia, state of Sabah, 24 km N Tawau, 18.viii 1995, GS 229 MP (leg. M. Omelko), FSCB.

Paratype: 1♂, same locality as holotype, 28.viii 1995, GS 230 MP (leg. M. Omelko), FSCB.

Diagnosis. The new species is similar to *E. beljaevi* sp. n. in appearance and in main characters of the male genitalia. It can be distinguished by the smaller size of adult and pattern of forewing with three dark yellow spots along costal margin and same number of monochromatic spots along dorsal margin. In the male genitalia, *E. natalyae* sp. n. differs from the previous species by the narrow cucullus almost equal to sacculus in width, and aedeagus with extended narrow apex, two triangular projections on its dorsal side and a bundle of long filiform cornuti.

Description. Adult (Fig. 2). Head with mainly monochromatic grey or greyish-brown scales. Scapus whitish with black, indistinct median band and with row of elongate black scales along anterior margin interrupted before middle; pedicellus and basal flagellomeres slightly widened (Fig. 4); flagellum black in proximal part and brownish in distal part, with dispersed whitish scales; and with long cilia on ventral side. First segment of labial palpus black; second segment white on inner side, blackish brown on outer side in basal and apical parts, with tuft of elongated grey scales; third segment light grey on inner side, with two black or brownish transverse bands at 1/4 and beyond middle and with tuft of elongated black or blackish brown scales on upper edge beyond middle. Patagia light grey, tegula and thorax dark brown. Forewing length 3.8–3.9 mm. Forewing greyish brown, with blackish basal and apical parts and spots of dark yellow raised scales—three spots along costal margin and three spots along dorsal margin; fringe mainly blackish grey, scales of fringe on costal margin with white tips. Hindwing brownish-grey; fringe dark brownish grey. Fore- and midlegs whitish on inner side and blackish on outer side with scattered whitish scales; hindlegs light grey, dorsal edge of hind tibia with brush of concolorous scales.

Segment 8 with elongate tergite with parallel sides and rounded posterior margin, and semi-oval sternite with broadly rounded posterior margin (Fig. 30).

Male genitalia (Figs 27–29). Uncus with a rounded apex and semi-oval lateral lobes. Culcitula of gnathos divided into two parts by median constriction; median sclerite of gnathos parallel-sided, with convex ventral edge and concave dorsal edge. Cucullus narrow and arched in distal part, slightly dilated towards apex, with large semi-oval ventral lobe in proximal part. Sacculus widened in basal part (ratio of maximal widths in basal and distal parts 3:1), narrowed beyond middle, slightly widened towards claw-like apex directed ventrally. Aedeagus relatively small, shorter than cucullus, tube-like and arched, with ventral, narrow, band-like sclerotisation stretching towards an elongated apex and two triangular dorsal projections, without caecum, opening for ejaculatory ductus on dorsal side and proximally bordered by ribbon-like apodeme for phallic muscles; fixed at basal 1/3 by semi-sclerotised anellus, vesica with bundle of long filiform cornuti. Juxta consisting of two lateral lobes, each with knob-like apex, integrated with vinculum. Vinculum widened laterally and with deep notch on posterior margin, saccus wide, triangular and with rounded apex.

Female unknown.

Etymology. The new species is named after entomologist Natalya V. Omelko, who took part in organization of expeditions to Borneo and processing the collected material. A noun in the genitive case.

Discussion

The new genus *Esexalata* gen. n. possesses characters typical for the genera in the subfamily Gelechiinae: tegumen with longitudinally elongated anterolateral parts, valva deeply divided into cucullus and sacculus, and juxta integrated with the vinculum into a single sclerite in the male genitalia (Ponomarenko 2005, 2009). In addition, it has a well-developed culcitula of the gnathos in the male genitalia similar to those in *Gelechia* Hübner and the recently described genus *Sabaha* (Omelko & Omelko 2019b) and is undoubtedly closely related to the latter, as both genera have a complex of synapomorphies such as ciliate antennal flagellum in males, semi-transparent area with piliform and forked scales on hindwings; a hood-shaped uncus, small median sclerite of the gnathos flattened laterally, well-developed and separated cuculli and sacculi, sacculi similar in shape and with claw-like apex, a juxta consisting of two sclerites fused with vinculum in the male genitalia; elongate 8th segment with sternite covered by semi-sclerotised fold with honeycomb-like sculpture on inner surface in the female genitalia.

The description of a new genus *Esexalata* **gen. n.** is based on the unique autapomorphies in appearance, male and female genitalia it possesses. The forewings of both sexes in species of the new genus are shining by metallic colours (metallic green and metallic pink), due to the optical interference. The forewings of both sexes lack semi-transparent area, which is found in representatives of the genus *Sabaha*. The genus *Esexalata* **gen. n.** has pronounced sexual dimorphism: males have unique wing-like structures on the metascutum folded crosswise between the wing bases and shimmer with the colours of the rainbow due to the optical interference and, probably, perform a signaling function. The dense hair-pencil is located under each wing-like structure and have a same base with the latter on the metascutum. Obviously, that only the anterior part of the bundle of hair-like scales, which remains unchanged in females, is transformed into a wing-like structure.

In addition, in the males of *Esexalata* **gen. n.**, the 1st abdominal tergite has a loop-like sclerotisation and cellular sculpture, which is probably linked with the glandular function like scent organs. Each hair-pencil coincides well in length with the described loop-like sclerotisation of the first abdominal tergite. This coincidence was established by modeling with overlay of wing-like structures and hair-pencils located underneath them on the base of the abdomen, namely tergite 1. It is assumed that sclerotisation of tergite 1, probably, serves as a pocket for hair-like pencils (Fig. 18). These components (glandular area and sclerotisation of 1st tergite and dense pencils of thorax) correspond to the structures of androconia (gland, hair-pencils and pockets) found so far mainly in macromoths. The females lack both wing-like structures on the thorax and loop-like sclerotisation on the 1st abdominal tergite, but they have bundles of hair-like scales on the metascutum similar to those in the related genus *Sabaha* (Ponomarenko *et al.* 2023: 8, Figs 5, 6). The genus *Esexalata* **gen. n.** may differ in the mechanism of sex fixation during mating, since the fultura superior is loop-shaped in males (Fig. 32), while representatives of the genera *Gelechia* and *Sabaha* have fultura superior with two distally separated sclerites. It allows to suppose that this loop-shaped fultura superior together with spinose structures of genital tegminal part (culcitula, lateral lobes of tegumen and fultura superior) take part in fixing female during mating, functionally compensating for weak gnathos. In addition, a different mechanism for holding the female by the male during mating may be indicated due a change in the position of the setae on the cuculli. Typically, the setae are located on the medial side of the cuculli and serve to female fixation by the lateral sides of the abdominal segments during the mating. In the new genus, the setae are located unusually, on the lateral side of cuculli instead of the medial side (Fig. 25).

The genus *Esexalata* **gen. n.** also differs from related genera by complex of specializations in the male and female genitalia: aedeagus with needle-shaped or filiform cornuti and opening for ejaculatory ductus shifted on its dorsal side in the male genitalia; and corpus bursae without signum in the female genitalia.

As a result of summarizing of morphological characters of the species from the genus *Esexalata* **gen. n.**, the latter is treated as related to the genera *Sabaha* and *Gelechia* and included into the tribe Gelechiini.

Acknowledgments

The authors are very grateful to Drs Richard Brown (Mississippi Entomological Museum, Mississippi State University, USA) and Ole Karsholt (Zoologisk Museum, Copenhagen, Denmark) for their constructive comments and recommendations on the text of the manuscript.

The research was carried out within the state assignment of Ministry of Science and Higher Education of the Russian Federation (themes Nos 124012400285-7 and 124012200183-8).

References

- Dvoretcky, I.H. (1976) *Latin-Russian Dictionary*. Russkij jazyk", Moscow, 1096 pp. [in Russian]
- Falkovitsh, M.I. & Stekolnikov, A.A. (1978) Introduction. In: Medvedev, G.S. (Ed.), *Key to the insects of European part of Russia. Vol. 4. Lepidoptera. Part 1*. Nauka, Leningrad, pp. 5–27. [in Russian]
- Gaede, M. (1937) Gelechiidae. In: Wagner, H., Strand, E. & Bryk, F. (Eds.) *Lepidopterorum Catalogus. 4 (79)*. W. Junk, Berlin's-Gravenhage, pp. 1–630.
- Huemer, P. & Karsholt, O. (1999) *Gelechiidae I (Gelechiinae, Teleiodini, Gelechiini)*. In: Huemer, P., Karsholt, O. & Lyneborg, L. (Eds.), *Microlepidoptera of Europe. Vol. 3*. Apollo Books, Stenstrup, pp. 1–356.
https://doi.org/10.1163/9789004629028_001
- Kirpicznikov, M.E. & Zabinkova, N.N. (1977) *Lexicon Rossico-Latinum in usum botanicorum*, 855 pp. [in Russian]
- Klots, A.B. (1970) Lepidoptera. In: Tuxen, S.L. (Ed.) *Taxonomist's glossary of genitalia in insects*. Munksgaard, Copenhagen,

pp. 115–130.

- Kristensen, N.P. (2003) Skeleton and muscles: adults. In: Kristensen, N.P. (Ed.), *Lepidoptera, Moths and Butterflies*. Vol. 2. Morphology, Physiology, and Development. *Handbook of Zoology*, 4, pp. 39–131.
<https://doi.org/10.1515/9783110893724.39>
- Kuznetsov, V.I. & Stekolnikov, A.A. (2001) *New approaches to the system of Lepidoptera of the world fauna*. Nauka, St. Petersburg, 460 pp. [in Russian]
- Meyrick, E. (1910) Description of Malayan Micro-Lepidoptera. *The Transactions of the Entomological Society of London*, for the year 1910, 430–478.
<https://doi.org/10.1111/j.1365-2311.1910.tb01179.x>
- Meyrick, E. (1916) n.k. In: *Exotic Microlepidoptera*. Vol. 1. Part 19. Taylor and Francis, London, pp. 577–608.
- Meyrick, E. (1923) n.k. In: *Exotic Microlepidoptera*. Vol. 2. Part 20. Taylor and Francis, London, pp. 609–640.
- Meyrick, E. (1925) Gelechiidae. In: Wytzman, P. (Ed.), *Genera Insectorum*. Vol. 184. Louis Desmet-Tervuren, Bruxelles, pp. 1–299.
- Meyrick, E. (1926) XI.—Microlepidoptera from Northern Sarawak. *The Sarawak Museum Journal*, 8, 147–168.
- Omelko, M.M. & Omelko, N.V. (2019a) Two New Species of Gelechiid Moths Genus *Semophylax* Meyrick, 1932 (Lepidoptera, Gelechiidae) Found in Malaysia. *Amurian Zoological Journal*, 11 (1), 37–41. [in Russian]
- Omelko, M.M. & Omelko, N.V. (2019b) New genera and species of gelechiid moths from the subfamily Gelechiinae (Lepidoptera, Gelechiidae) from Laos and Malaysia. *Amurian Zoological Journal*, 11 (2), 131–140. [in Russian]
- Omelko, M.M. & Omelko, N.V. (2020a) Four New Species of Gelechiid Moths of the Genus *Photodotis* Meyrick, 1911 (Lepidoptera, Gelechiidae) from Borneo. *Entomological Review*, 100 (5), 706–713.
<https://doi.org/10.1134/S0013873820050115>
- Omelko, M.M. & Omelko, N.V. (2020b) A new genus of Gelechiid moths of the tribe Litini (Lepidoptera, Gelechiidae: Gelechiinae) from Malaysia. *Amurian Zoological Journal*, 12 (3), 364–368. [in Russian]
<https://doi.org/10.33910/2686-9519-2020-12-3-364-368>
- Omelko, M.M. & Omelko, N.V. (2021a) A New Genus and Five New Species of the Gelechiid-Moth Tribe Gelechiini (Lepidoptera: Gelechiidae, Gelechiinae) from Laos and Malaysia. *Entomological Review*, 101 (2), 247–255.
<https://doi.org/10.1134/S0013873821020111>
- Omelko, M.M. & Omelko, N.V. (2021b) New and interesting species of Gelechiid moths of the genus *Helcystogramma* Zeller 1877 (Lepidoptera, Gelechiidae) from Laos and Malaysia. *Amurian Zoological Journal*, 13 (3), 418–422. [in Russian]
<https://doi.org/10.33910/2686-9519-2021-13-3-418-422>
- Omelko, M.M. & Omelko, N.V. (2022a) Two new species of gelechiid moths from the genus *Namlika* M. Omelko et N. Omelko (Lepidoptera: Gelechiidae, Gelechiinae) from Borneo. *Amurian Zoological Journal*, 14 (4), 655–661. [in Russian]
<https://doi.org/10.33910/2686-9519-2022-14-4-655-661>
- Omelko, M.M. & Omelko, N.V. (2022b) A new genus and two new species of Gelechiid moths from the subfamily Gelechiinae (Lepidoptera, Gelechiidae) from Borneo. *Amurian Zoological Journal*, 14 (4), 662–668. [in Russian]
<https://doi.org/10.33910/2686-9519-2022-14-4-662-668>
- Ponomarenko, M.G. (2005) Gelechiid moths (Lepidoptera, Gelechiidae) of the Palaearctica: functional morphology of the male genitalia, phylogeny and taxonomy. *Meetings in memory of N.A. Choldkovsky, St.-Petersburg*, 58 (1), 1–139. [in Russian]
- Ponomarenko, M.G. (2009) *Gelechiid Moths of the Subfamily Dichomeridinae (Lepidoptera: Gelechiidae) of the World*. Dalnauka, Vladivostok, 389 pp., 4 pls. [in Russian]
- Ponomarenko, M.G., Omelko, M.M. & Omelko, N.V. (2021a) New genus of Gelechiid moths (Lepidoptera: Gelechiidae) from Borneo, and its four new species. *Zootaxa*, 5004 (3), 465–480.
<https://doi.org/10.11646/zootaxa.5004.3.4>
- Ponomarenko, M.G., Omelko, M.M. & Omelko, N.V. (2021b) *Neolitinia sulphurata* gen. n., sp. n. (Lepidoptera: Gelechiidae) from Borneo island. *Far Eastern Entomologist*, 438, 6–12.
<https://doi.org/10.25221/fee.438.2>
- Ponomarenko, M.G., Omelko, M.M. & Omelko, N.V. (2021c) *Parateleiopsis feregrisea* (Lepidoptera: Gelechiidae), a new genus and a new species from Borneo. *Annales Zoologici Fennici*, 59, 47–52.
<https://doi.org/10.5735/086.059.0105>
- Ponomarenko, M.G., Omelko, M.M. & Omelko, N.V. (2023) New species of gelechiid moths of the genus *Sabaha* M. Omelko et N. Omelko, 2019 (Lepidoptera: Gelechiidae) from Borneo Island. *Far Eastern Entomologist*, 486, 6–24.
<https://doi.org/10.25221/fee.486.2>
- Robinson, G.S. (1976) The preparation of slides of Lepidoptera genitalia with special reference to the Microlepidoptera. *Entomologist's Gazette*, 27, 127–132.
- Robinson, G.S., Tuck, K.R. & Shaffer, M. (1994) *A Field Guide to the Smaller Moths of South-East Asia*. Malaysian Nature Society, Kuala Lumpur, 308 pp.
- Scoble, M.J. (1992) *The Lepidoptera. Form, function and diversity*. Oxford University Press, New York, New York, 404 pp.
- Snodgrass, R.E. (1935) *Principles of insect morphology*. McGraw-Hill book Company, Inc., New York & London, 667 pp.
- Walker, F. (1864) n.k. In: *List of the specimens of Lepidopterous Insects in the collection of the British Museum*. Vols. 29–30. British Museum (Nat. Hist.), London, pp. 563–1096.